



## LIMITED LIFETIME WARRANTY

Compass Manufacturing International warrants to the original consumer purchaser that the faucet be free from defects in material and workmanship for as long as the original consumer purchaser owns the home in which the faucet was first installed.

In the event that Freendo faucets are used in a Commercial Application, this warranty is limited for a period of 5 years, unless otherwise specifically stated in the catalog and/or price book.

Compass Manufacturing International will replace, free of charge, during the applicable warranty period, any part or finish that proves defective in material and/or workmanship under normal installation, use and service. This warranty shall not apply to goods which have been subject to accidents, negligence or improper installation. Compass Manufacturing International will not be liable for other damages or losses, including, but not limited to: labor charges and/or damages incurred in installation, repair or replacement as well as any other kind of loss or damage. Proof of purchase from the original consumer purchaser must be made available for all warranty claims.

Compass Manufacturing International recommends using a professional plumber for all installation and repair. Compass Manufacturing International will, at its discretion, provide new or equivalent replacement parts for any product that proves to be defective under normal usage and service. Replacement parts may be obtained by emailing the address below, calling the number below or by writing to:

### Compass Manufacturing International

Freendo Product Service

6702 Enterprise Drive

Louisville, KY 40214

800.626.3525

[warranty@cmiproduct.com](mailto:warranty@cmiproduct.com)

Revised 5/17/18

[warranty@cmiproduct.com](mailto:warranty@cmiproduct.com)

© Compass Manufacturing International

800.626.3525



Model No. : 192-6818 Polished Chrome  
192-6819 Brushed Nickel Spotless PVD



**Casmir Slide Bar Faucet**



## Helpful Information

### Helpful Tools

#### Tools:

Gather the necessary tools as shown below to complete the installation of this faucet. Some may not be needed depending on the model of faucet you are installing.



Plumber's Putty  
and/or Silicone



Flashlight



Safety Glasses



Adjustable Wrench



Screwdriver



Pliers



Channel Locks

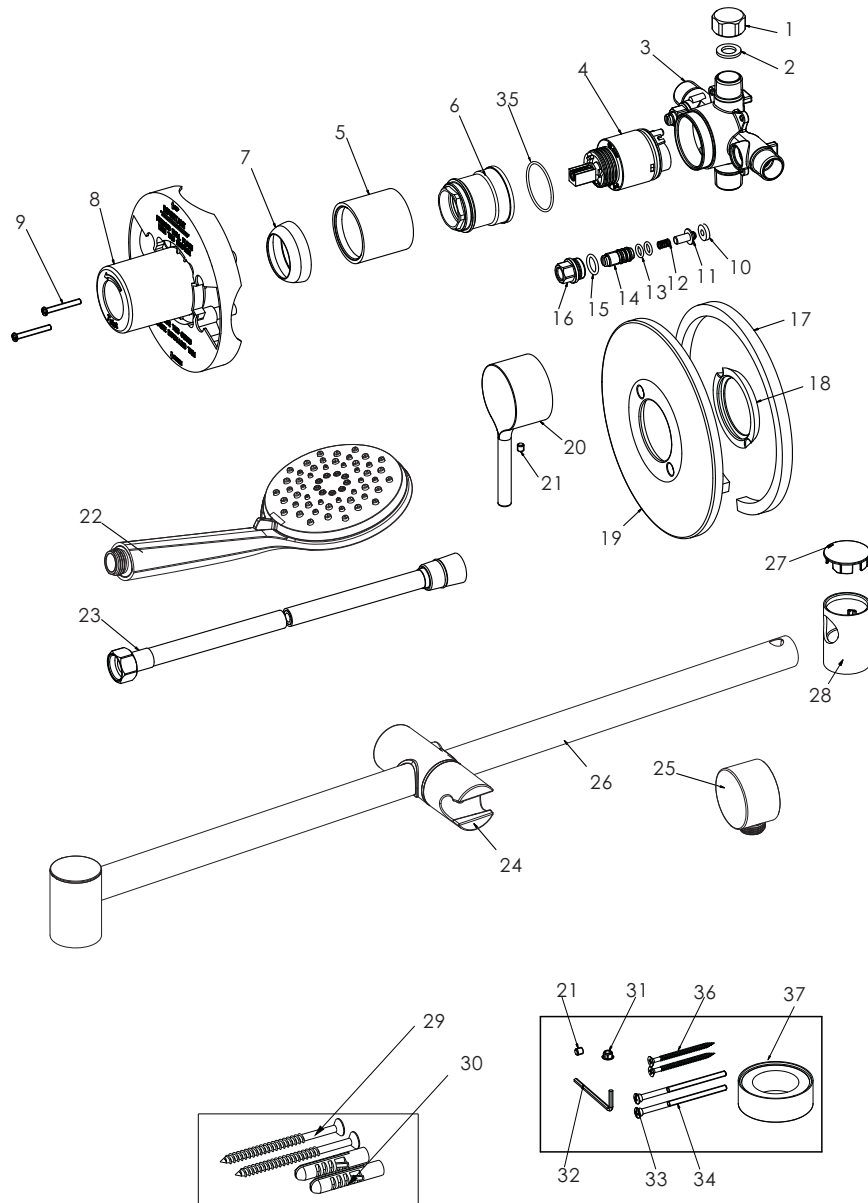
5

## Parts List

| No. | Part Name         |
|-----|-------------------|
| 1   | End Cap           |
| 2   | Washer            |
| 3   | Valve Body        |
| 4   | Cartridge         |
| 5   | Cartridge Housing |
| 6   | Lock Nut          |
| 7   | Trim Cap          |
| 8   | Protective Cover  |
| 9   | Screw             |
| 10  | Sealing Washer    |
| 11  | Stopper           |
| 12  | Spring            |
| 13  | O-ring            |
| 14  | Adjuster          |
| 15  | O-ring            |
| 16  | Adjuster Seat     |
| 17  | Sealing Washer    |
| 18  | Washer            |
| 19  | Escutcheon Plate  |
| 20  | Handle            |
| 21  | Set Screw         |
| 22  | Shower            |
| 23  | Shower Hose       |
| 24  | Shower Holder     |
| 25  | Wall Supply       |
| 26  | Slide Bar         |
| 27  | Trim Cap          |
| 28  | Base Support      |
| 29  | Screw             |
| 30  | Insert            |
| 31  | Handle Button     |
| 32  | Allen Key         |
| 33  | O-ring            |
| 34  | Screw             |
| 35  | O-ring            |
| 36  | Screw             |
| 37  | Teflon Tape       |

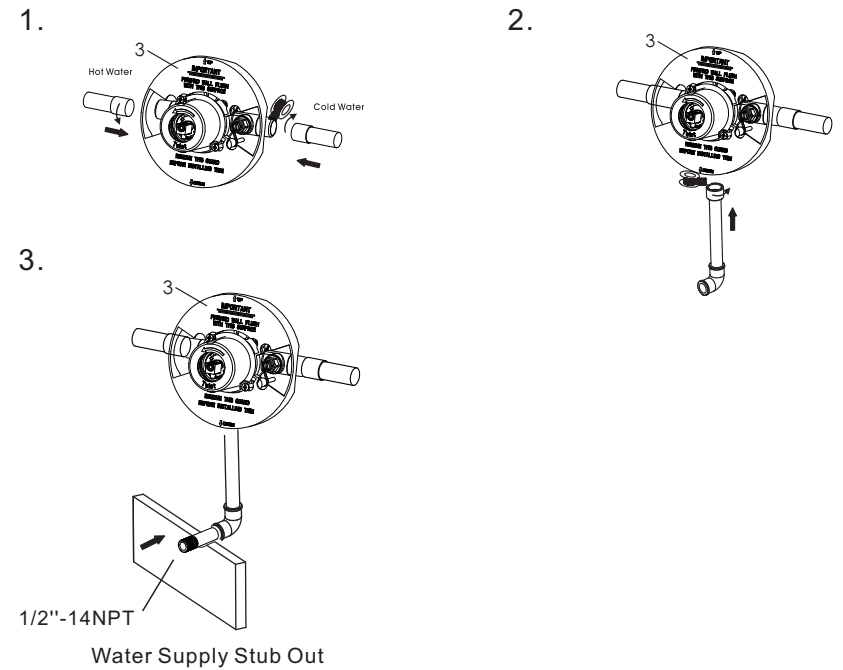
# 4

## Parts Diagram



# 1

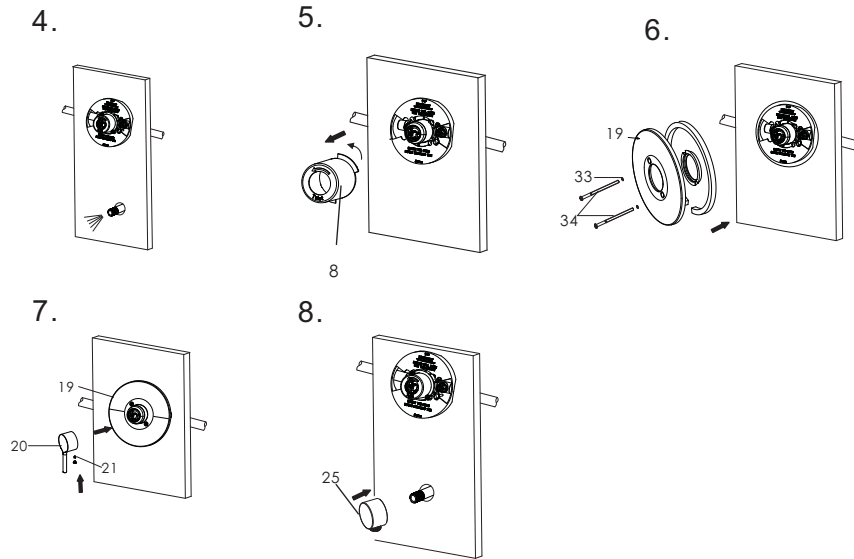
## Shower Installation



1. If this is not a thin wall mounting, the protective cover ⑧ may be removed from the valve body ③.  
**Please Note:** Be sure the valve body is secured to the support cross board for stability.
2. Apply teflon tape ③⑦ on all pipe threads. Install an elbow on the end, secure the shower elbow to the 2x4 bracing.
3. Install the nipple to the stub out, using the proper length nipple so that the nipple extends 3/8" from the finished wall. In order to assure proper function, piping from the bottom portion of the valve to the water supply stub out must be 1/2" nominal copper pipe or 1/2" iron pipe. Do not use PEX for the water supply stub out.

## 2

### Shower Installation



4. Turn on the hot and cold water supply lines with the faucet off, check for leaks. If there is a leak, refer to the correct section and repeat the step.

5. Remove the protective cover (8).

6. Install escutcheon plate (19) and secure with screws (34) and o-ring (33). Make sure valve is in off position.

**Please Note:** Do not remove the customer service tag with the model number and phone number as this will be helpful if you need assistance in the future.

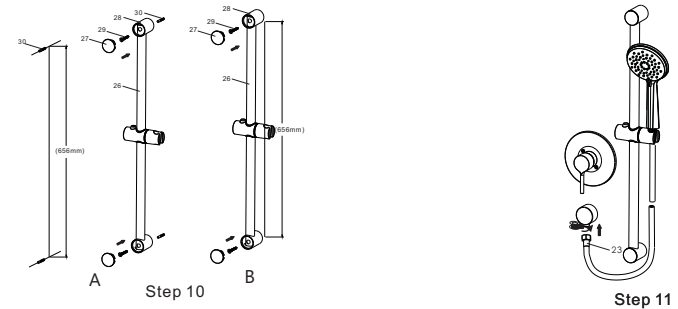
7. Assemble the handle (20) on the escutcheon plate (19), secure with the set screw (21).

8. Turn on the faucet and let the water run from the water supply stub out for one minute to flush out the debris from the line.

9. Install wall supply (25). See diagram for visual.

## 3

### Configuration



10. Gauge the fixed position according to the actual measurement of product.

**Drywall or Ceramic Tile Installation:** As shown in figure A, drilling 5/16" holes and tapping insert anchors (5) in the wall. Put together the slide bar (1) and the base support (3), install it to the wall using the screws (4), put on the trim caps (6).

As shown in figure B, put together the slide bar (1) and the base support (3), install it to the wall using the screws (4), put on the trim caps (6).

**Wood Wall Stud Installation:** Drill 3/32" holes repeat figure B step.

11. Apply teflon tape to the ends of the shower hose (23) and install it per the diagram.

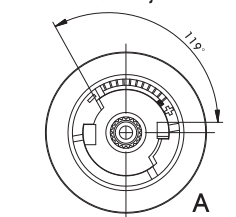
12. Turn on the water and check for leaks. If there are leaks, please reinstall.

### Adjusting hot water stop.

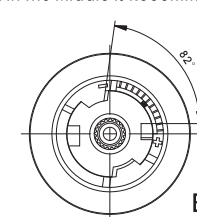
Hot Water Adjustment

Position In The Middle Is Recommended

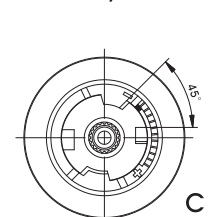
Cold Water Adjustment



High Temperature setting  
(Factory setting)



Average Temperature setting



Low Temperature setting

By default, the temperature limiting device is set to the highest temperature (A). In order to reduce the temperature, remove the temperature limiting device and turn clockwise to the desired position (B or C).