

MaxLite® LED Small Flood Fixtures



General Safety Information

- To reduce the risk of death, personal injury or property damage from fire, electric shock, falling parts, cuts/abrasions, and other hazards read all warnings and instructions included with and on the fixture box and all fixture labels.
- Before installing, servicing, or performing routine maintenance upon this equipment, follow these general precautions.
- Commercial installation, service and maintenance of luminaires should be performed by a qualified licensed electrician.
- For Residential installation: If you are unsure about the installation or maintenance of the luminaires, consult a qualified licensed electrician and check your local electrical code.
- **DO NOT INSTALL DAMAGED PRODUCT!**
- This fixture is intended to be connected to a properly installed and grounded UL listed junction box.



Picture is for illustration purposes only.
Your model may vary.

WARNING:

- Risk of Fire - Supply conductors (power wires) connecting the fixture must be rated minimum 90 . If uncertain consult an electrician.
- Risk of fire or electric shock. installation requires knowledge of luminaires electrical systems.
- Risk of Fire/Electric Shock - If not qualified, do not attempt installation. Contact a qualified electrician.
- Do not use in high humidity conditions.
- Keep away from flammable and explosive environment.
- Don't cover the fixture with insulation liner or similar material.
- Don't install where fixture is loose or only partially supported.
- Don't impact or exert pressure on the fixture surface face or rear, as damage may occur.

CAUTION:

- For your safety read and understand instructions completely before starting installation.
- To prevent wiring damage or abrasion, do not expose wiring to edges of sheet metal or other sharp objects.
- Before attempting installation, check your local electrical code, as it sets the wiring standards for your locality.

NOTES:

- If luminaire (fixture) is to be switched from a wall switch, make sure black power supply wire is connected to the switch. **DO NOT** connect the white supply wire to the switch.
- Make certain no bare wires are exposed outside the wire nut connectors.
- Do not make or alter any open holes in an enclosure of wiring or electrical components during kit installation.

Model:

FLSxx/G2 Series

Operating characteristics:

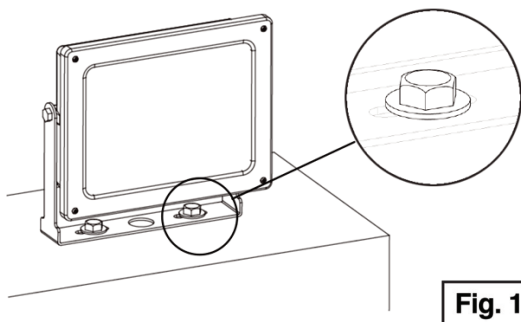
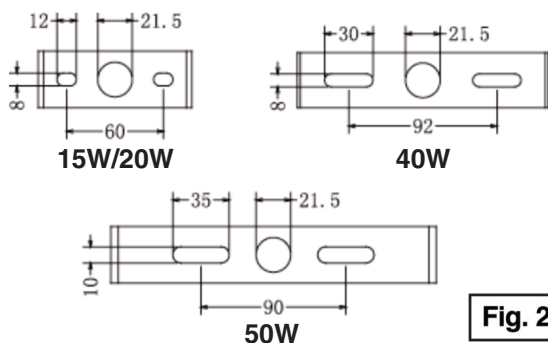
Operating temperature: -30°C to 40°C

Input voltage range: 120-277V 50/60 HZ

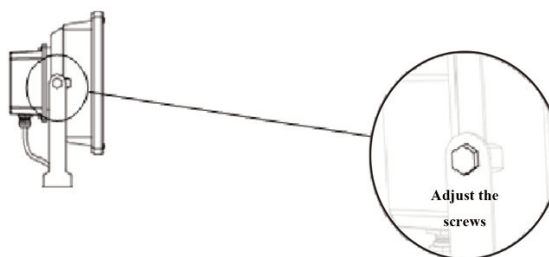
MaxLite® LED Small Flood Fixtures

Installation Instructions

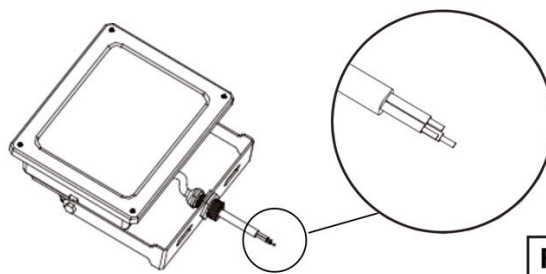
- 1.) Inspect components to ensure that male and female port threads and sealing surfaces are free of burs, nicks and scratches or any foreign material.
- 2.) Thread fixture into flat mounting surface (**Fig. 1**). Please see detailed diagrams of mounting trunnions below (**Fig. 2**).


Fig. 1

Fig. 2

- 3.) Using a wrench, adjust luminaire to desired aiming angle and tighten screw (**Fig. 3**)


Fig. 3

- 4.) Inspect to ensure that the screw is seated flat on the mounting surface.
- 5.) Connect power to fixture (**Fig. 4**). Make sure the power supply is disconnected before installing.

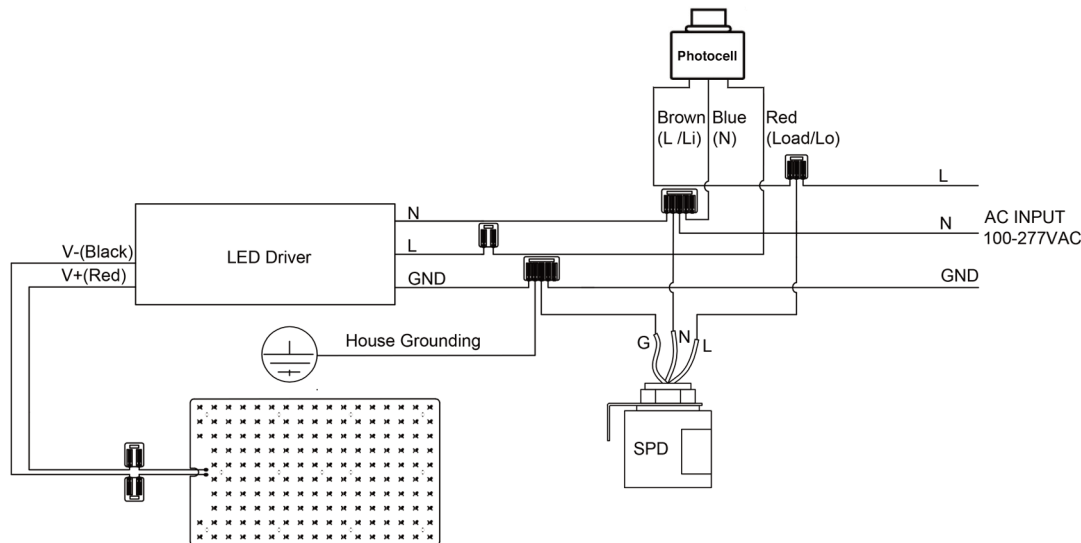

Fig. 4

MaxLite® LED Small Flood Fixtures



Installation Instructions (Continued)

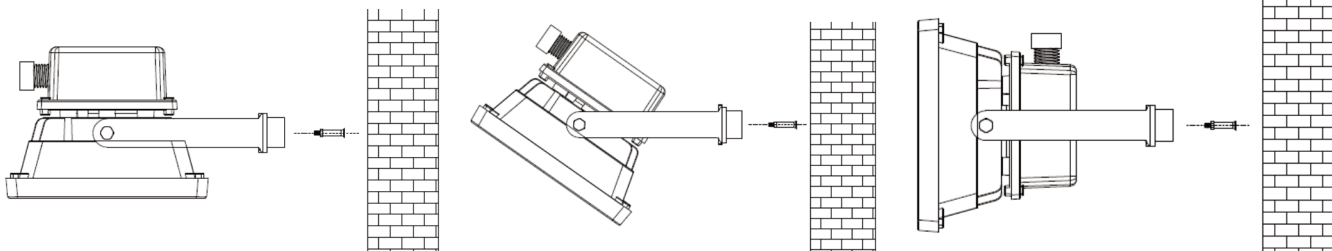
6.) For models with a photocell, remove the black sensor cap and install the clear sensor cap instead. If no photocell is needed, the black sensor cap can be left in place.



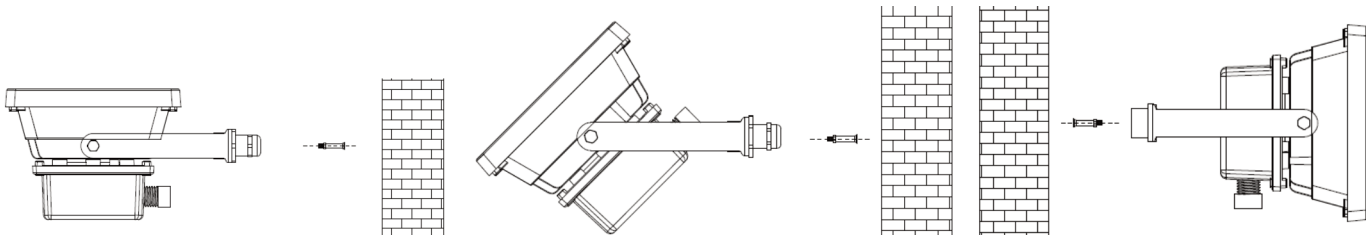
WARNING:

For models with photocell, please make sure the photocell is on the top.

CORRECT:



WRONG:



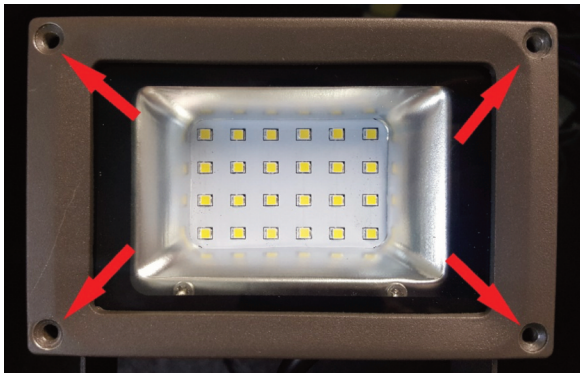
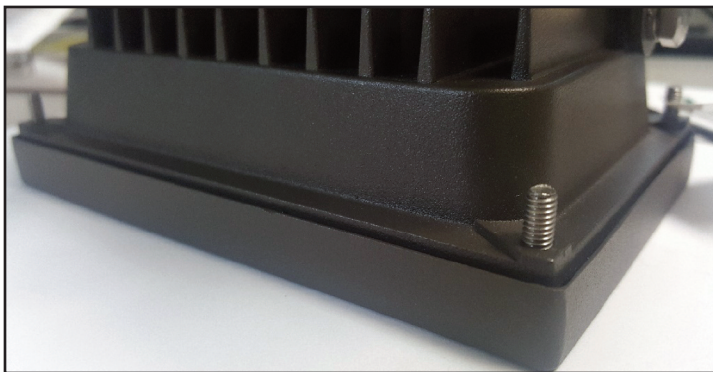
MaxLite® LED Small Flood Fixtures



Installation Instructions (Continued) - Accessories

Vandal Shield: 15W / 20W / 50W versions

- 1.) First, remove all 4 corner screws securing the front plate to the fixture. **(Fig. 1)**
- 2.) Next, place and align the 4 longer screws that come with the kit. There should be some thread protrusion. **(Fig. 2)**
- 3.) Then, place the 4 corner brackets in a way where the slot on the bracket is aligned with the thread on the 4 corner screws. After, secure the brackets to the 4 corner screws by using a locknut to secure the brackets in place. **(Fig. 3)**
- 4.) Finally, align the 4 corner holes on the vandal shield with the holes on the corner brackets. Secure using the 4 smaller screws that came with the kit.

**Fig. 1****Fig. 2****Fig. 3**

MaxLite® LED Small Flood Fixtures

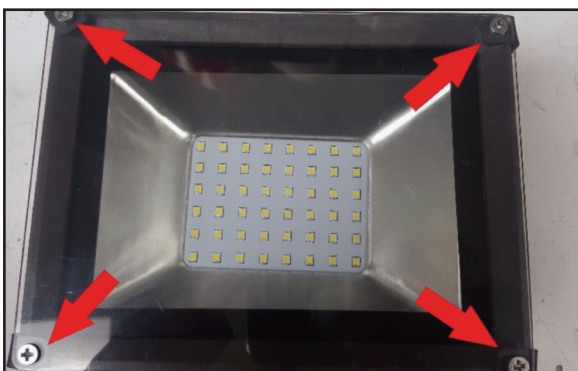


Installation Instructions (Continued) - Accessories

Vandal Shield: 40W version

- 1.) First, remove the 4 corner screws securing the front plate to the fixture. (**Fig. 1**)
- 2.) Next, align the 4 longer screws with the corner holes behind the front plate; begin screwing them in, but leave space for the slots on the corner brackets.

Then, place the slots of the corner brackets between the screw head and the fixture plate; secure the corner bracket by fully tightening the 4 corner screw holes. (**Fig. 2**)
- 3.) Finally, align the 4 corner holes on the vandal shield with the holes on the corner brackets. Secure using the 4 smaller screws that came with the kit. (**Fig. 3**)

**Fig. 1****Fig. 2****Fig. 3**

MaxLite® LED Small Flood Fixtures

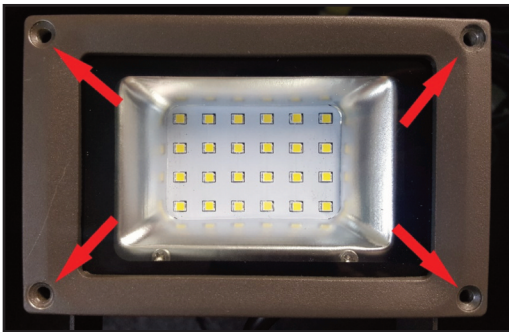
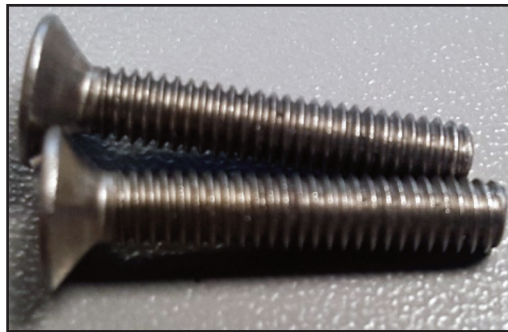
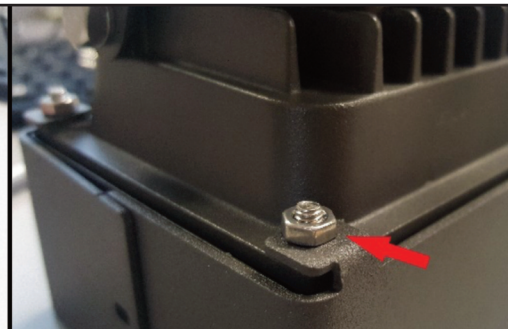
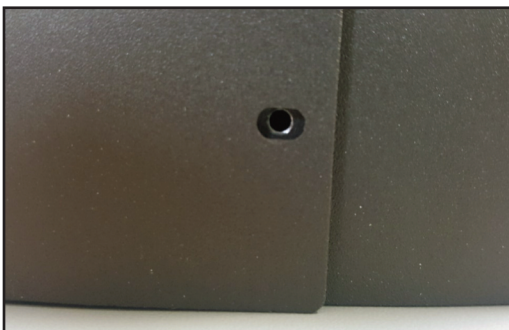


Installation Instructions (Continued) - Accessories

Visors:

15W / 20W / 50W versions

- 1.) First, remove the 4 corner screws securing the front plate to the fixture. **(Fig. 1)**
- 2.) Next, place and align the 4 longer screws that come with the kit. **(Fig. 2)**
- 3.) After, take either component from the visor and align the tapped holes with the protruding threads from the corner screws. Secure each thread with a locknut. **(Fig. 3)**
- 4.) Then, repeat the process for the other visor component. Make sure the smaller side hole remains underneath the larger side hole. **(Fig. 4)**
- 5.) Finally, Secure the two visors together using the 2 side screws provided in the kit. **(Fig. 5)**

**Fig. 1****Fig. 2****Fig. 3****Fig. 4****Fig. 5**

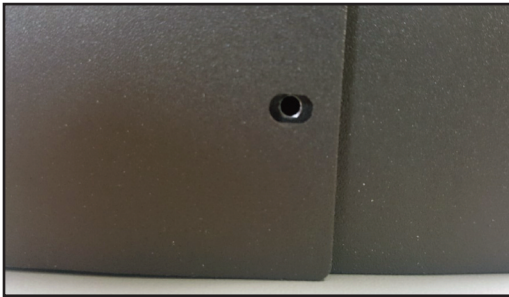
MaxLite® LED Small Flood Fixtures



Installation Instructions (Continued) - Accessories

Visors: 40W version

- 1.) First, remove the 4 corner screws securing the front plate to the fixture. (**Fig. 1**)
- 2.) Next, align the tabs on the visor with the corner holes and use the longer screws from the kit to secure the visor to the fixture. **Tip:** An easy method to attach the visor is to put the fixture on its side and attach each component separately. (**Fig. 2**)
- 3.) Then, repeat the same process for the other side of the visor. Make sure the larger tapped side screw hole is on the outside. (**Fig. 3**)
- 4.) Finally, secure the two visors together by using the 2 smaller side screws provided in the kit. (**Fig. 4**)

**Fig. 1****Fig. 2****Fig. 3****Fig. 4**

MaxLite® LED Small Flood Fixtures



Warranty Information

MaxLite Inc. warrants its products for a minimum period of **FIVE (5)** years from the date of original purchase from MaxLite or its authorized distributor/dealer (the "Warranty Period"), as follows: If a Product fails to operate during the Warranty Period as a result of defects in materials or workmanship, MaxLite will, at its option, repair it, replace it with the same or like Product.

Please refer to Maxlite's website (at <http://maxlite.com/resources/warranties>) for the complete terms and conditions of our warranty.

Limitation of Liability

THE FOREGOING WARRANTY IS EXCLUSIVE, AND IS THE SOLE REMEDY FOR ANY AND ALL CLAIMS, WHETHER IN CONTRACT, IN TORT OR OTHERWISE ARISING FROM THE FAILURE OF PRODUCT AND IS IN LIEU OF ALL OTHER WARRANTIES, EXPRESS OR IMPLIED, INCLUDING ALL WARRANTIES OF MERCHANTABILITY OR FITNESS FOR A PARTICULAR PURPOSE, WHICH WARRANTIES ARE HEREBY EXPRESSLY DISCLAIMED TO THE EXTENT PERMITTED BY LAW AND, IN ANY EVENT, SHALL BE LIMITED TO THE WARRANTY PERIOD SPECIFIED ABOVE. THE LIABILITY OF MAXLITE SHALL BE LIMITED TO THE TERMS OF THE EXPRESS WARRANTY SET FORTH HEREIN. IN NO EVENT WILL MAXLITE BE LIABLE FOR ANY SPECIAL, INCIDENTAL OR CONSEQUENTIAL DAMAGES INCLUDING, WITHOUT LIMITATION, DAMAGES RESULTING FROM LOSS OF USE, PROFITS, BUSINESS OR GOODWILL, LABOR COSTS, REMOVAL OR INSTALLATION COSTS, DECREASE IN THE LIGHT OUTPUT OF THE LAMP, AND/OR DETERIORATION IN THE LAMP'S PERFORMANCE, WHETHER OR NOT MAXLITE HAS BEEN ADVISED OF THE POSSIBILITY THEREOF. UNDER NO CIRCUMSTANCES SHALL MAXLITE'S ENTIRE LIABILITY FOR A DEFECTIVE PRODUCT EXCEED THE PURCHASE PRICE OF THAT PRODUCT. WARRANTY SERVICES PROVIDED UNDER THESE TERMS AND CONDITIONS DO NOT ENSURE THE UNINTERRUPTED OPERATION OF PRODUCTS; MAXLITE SHALL NOT BE LIABLE FOR DAMAGES CAUSED BY ANY DELAYS INVOLVING WARRANTY SERVICE.

This Limited Warranty gives you specific legal rights and you may also have other rights that may vary from state to state. Because some states or jurisdictions do not allow the exclusion or limitation of liability for consequential or incidental damages, this limitation may not apply to you.