

# Calbrite™

## Stainless Steel Conduit Systems

### Stainless Steel Couplings

#### Features:

- Manufactured in type 304 & 316 stainless steel to meet any stringent sanitary condition
- Polished with standard "brite" finish to increase corrosion resistance and aesthetic appearance
- Included with each length of stainless rigid conduit sold
- No package qty. required



#### Certifications and Compliances:

Calbrite™ stainless steel couplings are UL / CUL listed and manufactured to UL6A standards.

UL file number – E230584

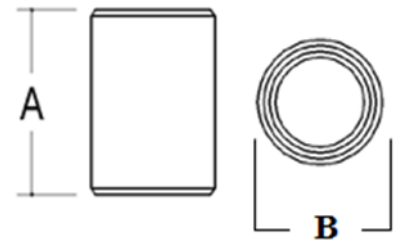
Full NEC code compliance

Meets ASTM A-312/SA-312 standards

Manufactured in the United States

#### Applications:

Designed for use with stainless steel rigid conduit, and to connect threaded stainless conduit, nipples, and other threaded fittings.



#### Industries Commonly Served:

- Food & Beverage Production & Distribution
- Chemical Plants
- Water & Wastewater Treatment
- Pharmaceuticals & Cosmetics
- Refining & Extraction Sites
- Petrochemical Operations
- Marine & Coastal Facilities
- Pulp and Paper Mills
- Along with other corrosive environments

Size	Part Number	A	B	I.D.	Wall Thickness	Weight (ea) per lb.
1/2"	S60500CP00	1.570"	1.075"	.770"	.125"	0.17
3/4"	S60700CP00	1.630"	1.315"	.980"	.160"	0.26
1"	S61000CP00	2.000"	1.550"	1.270"	.160"	0.34
1-1/4"	S61200CP00	2.050"	1.950"	1.590"	.160"	0.51
1-1/2"	S61500CP00	2.063"	2.200"	1.800"	.160"	0.61
2"	S62000CP00	2.125"	2.740"	2.300"	.200"	0.90
2-1/2"	S62500CP00	3.190"	3.320"	2.730"	.250"	1.87
3"	S63000CP00	3.250"	3.800"	3.350"	.150"	1.93
4"	S64000CP00	3.540"	5.120"	4.340"	.330"	3.97

\* Contact factory for 5" & 6" Coupling info.

All dimensions are for informational purposes only \* Tolerances +/- .5%