

Powertite™ Series Pin and Sleeve Plugs, Connectors and Receptacles

NEC/CEC:

Listed for Ordinary (Unclassified) Locations
NEMA 3, 3R, 4, 4X

PLUGS AND RECEPTACLES: NEC/CEC ORDINARY LOCATION

APPLETON™

Applications

- Designed to supply power to portable or fixed electrical equipment such as motor generator units, welders, pumps, compressors, cellular relay stations, and similar apparatus.
- Ideal for use on shipping docks, ports, and other "ship to shore" applications.
- Suitable for use in locations where a weatherproof enclosure is required.
- Rough usage construction.

Features

- Available in 30, 60, 100, 150, 200, and 400 Amp units.
- Available in two grounding styles: Style 1 (shell only) and Style 2 (shell and extra pole).
- Neoprene bushing compressed by cable collar prevents entrance of water. Bushing is highly resistant to hydrocarbon deterioration and is self-extinguishing.
- Locking screw and slot prevents plug cable collar from "backing off."
- Contacts exert constant pressure along entire contact surface and provide electrical continuity.
- Suitable for use from -25 °C to +40 °C (-13 °F to +104 °F).
- Insulating blocks provide greatest dielectric and mechanical strength and lowest arc tracking.
- Positive polarization: only plugs and receptacles of same style, number of poles and ampere rating can be used together.
- Circuit breaking: in 30, 60, 100, 150 and 200 Amp units, any arcing created as line and load terminals disengage is safely confined deep within terminal cavities. Plugs may be withdrawn in an emergency under full rated loads without separate disconnect switches (400 Amp plug is for disconnecting use only; not for current rupturing).
- 30, 60, 100, and 150 Amp Powertite™ plugs also suitable for classified locations when used with Appleton EBR, EBRH, JBR, MD2SR, or DBR explosionproof interlocking receptacles.
- Controlled length contacts ensure that ground makes first and breaks last for added safety.
- Intermatability Ⓢ: Intermateable with Crouse-Hinds Arkrite® and Powermate™, and Killark Versamate®.

Standard Materials

- Plug, receptacle, connector and mounting box housings: copperfree (4/10 of 1% max.) aluminum
- Insulating blocks: glass filled polyester

Standard Finishes

- Aluminum plug, receptacle, connector and mounting box housings: epoxy powder coat
- Insulating blocks and contacts: natural finish



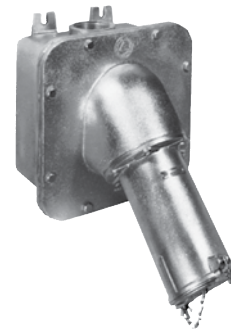
30 and 60 Amp



100 and 150 Amp



200 Amp



400 Amp

Options

- See Illustrated Options

NEC/CEC Certifications and Compliances

- UL Standard: UL 1682, UL 1686 ①, UL 50E
- UL Listed: E145916, E145917
- CSA Standard: C22.2 No. 182.1
- CSA Certified: 065179
- NEMA 4X (30, 60, 100, 150, and 200 Amp)
- NEMA Configuration: FB11

Related Products

- For classified location plugs and receptacles, see *Plugs and Receptacles: Hazardous Location*.

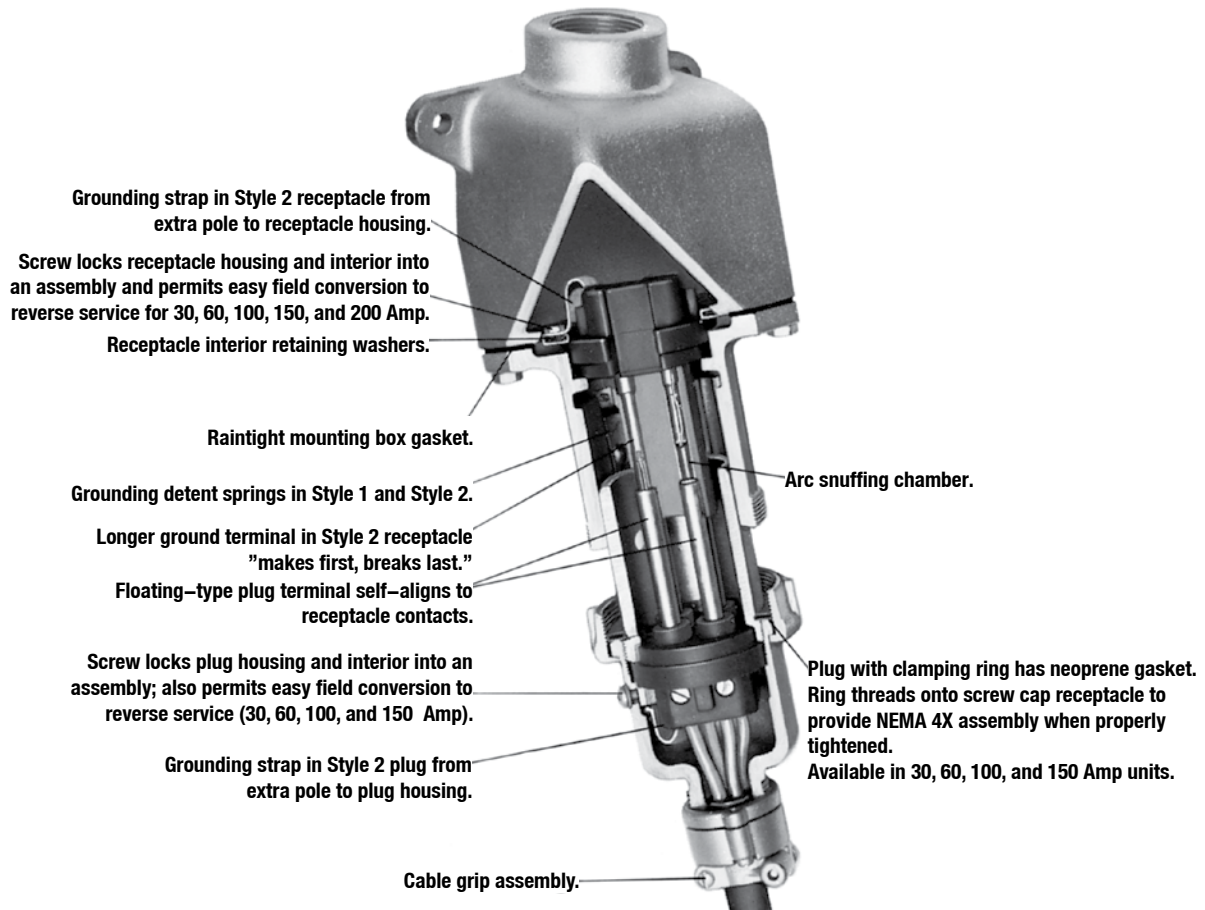
① The UL 1686 standard is applicable to units up to 100 Amps.

② Classified by UL and Certified by CSA for use in specific combinations with Crouse-Hinds Arkrite® or Killark Versamate®. Arkrite is a registered trademark of Cooper Crouse-Hinds. Versamate is a registered trademark of Hubble Killark.

Powerlite™ Series Pin and Sleeve Plugs, Connectors and Receptacles

NEC/CEC:
Listed for Ordinary (Unclassified) Locations
NEMA 3, 3R, 4, 4X

Illustrated Features



PLUGS AND RECEPTACLES: NEC/CEC ORDINARY LOCATION

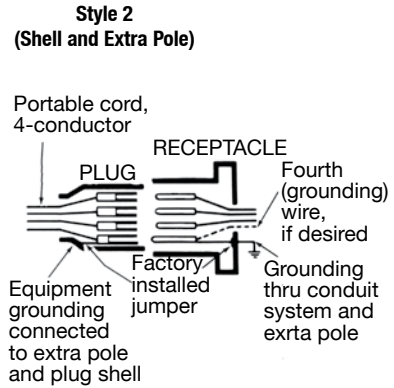
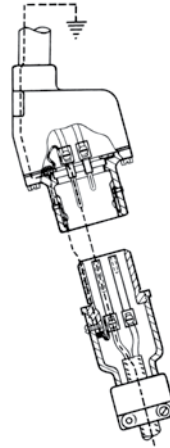
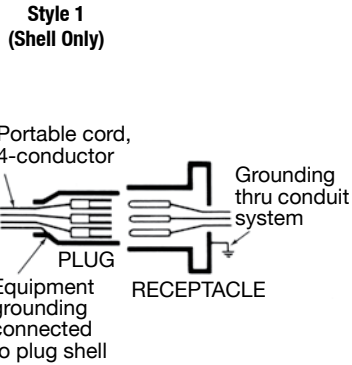
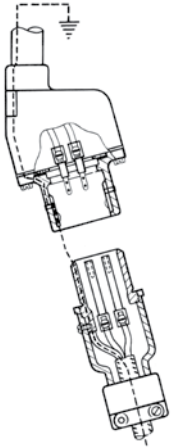
APPLETON™

Powertite™ Series Pin and Sleeve Plugs, Connectors and Receptacles

NEC/CEC:
Listed for Ordinary (Unclassified) Locations
NEMA 3, 3R, 4, 4X

Illustrated Features

Grounding Styles



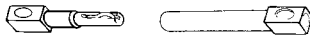
Plug—Equipment grounding conductor is wired directly to solderless lug which is connected to the plug housing with a pressure connector. All terminals are "current carrying."

Receptacle—Two detent spring clips engage the grounded plug housing on plug insertion-grounded plug shell makes contact with receptacle ground spring before line and load poles are engaged. Grounding path is maintained until after current-carrying contacts disengage. All terminals are "current carrying."

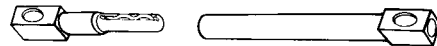
Plug—Equipment grounding conductor is not only connected to the solderless lug in the plug housing, but also to an extra grounding pole. Grounding pole has copper alloy grounding jumper strap that connects to plug housing.

Receptacle—Two detent spring clips engage grounded plug housing on plug insertion. Jumper from extra grounding pole is electrically connected to a screw on receptacle housing. Longer grounding pole "makes first and breaks last."

Pin and Sleeve Design ①



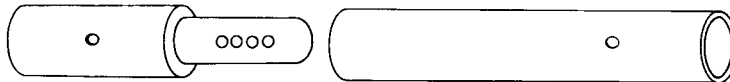
30, 60, and 100 Amp Pressure Wire Terminals.
Solid Brass Contacts with Beryllium Copper Springs.



150 Amp Pressure Wire Terminals.
Solid Copper Contacts with Beryllium Copper Springs.



200 Amp Pressure Wire Terminals. Solid Copper Split-Type Contact.



400 Amp 0.84" Solder Well Wire Terminals. Solid Copper Contacts with Four Spring-Loaded Borosilicate Bearings.



400 Amp 1.25" Solder Wire Well Terminals. Solid Copper Contacts with Four Spring-Loaded Borosilicate Bearings.

① Pins and sleeves are not sold separately. Must be purchased as entire interior replacement. Available on the Replacement Interiors pages.

PowerTite™ Series Pin and Sleeve Plugs, Connectors and Receptacles

NEC/CEC:
Listed for Ordinary (Unclassified) Locations
NEMA 3, 3R, 4, 4X

Illustrated Features

Spring Door and Screw Cap

30, 60, 100, and 150 Amp spring door and screw cap receptacles are threaded to accept clamping ring ACP plug. The ring threads onto the receptacle to form a raintight assembly with plug in use—and also to prevent plug fallout. When the plug is withdrawn, the gasketed spring door cover closes tightly against receptacle opening automatically, providing weatherproof protection. Spring door has stainless steel spring and shaft.



Spring Door Cover

30, 60, 100, and 150 Amp units may be located at any position in a 360° circle by adjusting a setscrew. Set screw also allows complete removal of cover. Spring door available on 200 Amp units.

NOTE: Spring Door cover in open positions for illustration only.



ACP Plugs

Supplied with bushings to accommodate a wide variety of cable diameters. 30 Amp plug clamp used in first position with smallest inside diameter bushing provides positive grip on cables as small as 0.390 inches, such as those that are used in oil rig installations.



Reversible Cable Clamps

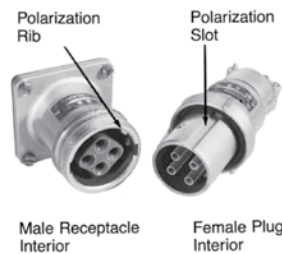
Permits wide cable range (just loosen screws and flip over). Each position accommodates one of two bushings. Convenient in installations having different cable sizes.



Illustrated Options

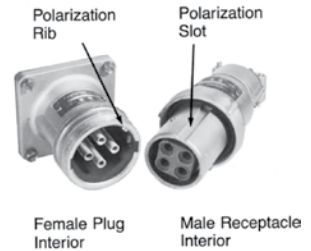
Standard Service

Energized receptacle has recessed male contacts to reduce danger of accidental touching. Plug has female contacts that are energized only upon insertion in receptacle.



Reverse Service (Generator Application)

Useful where a "hot" plug feeds a dead receptacle. Reverse service is often used for generator applications where the receptacle houses a dead plug interior. Plug houses an energized receptacle interior, which has recessed male contacts to reduce danger of accidental touching. 30, 60, 100, 150, and 200 Amp units can be easily converted to reverse service in the field when matching plug and receptacle are ordered. 400 Amp unit is only available as a factory assembled item at extra cost. Add suffix **-RS** to receptacle or connector.



Special Polarization

Special polarization is available on 30, 60, 100, 200, and 400 Amp units. Prevents plug insertion in a receptacle or connector wired for a different voltage. In installations where there are different line voltages, the special polarization option is desirable. This allows only plugs and receptacles wired for the same line voltage to be mated together. The receptacle or connector interior is positioned 22-1/2°, relative to the polarization rivet, to the right (as specified) of standard, and plug is polarized to correspond. Add suffix **-P4** to the standard or reverse service plug, receptacle or connector.

PLUGS AND RECEPTACLES: NEC/CEC ORDINARY LOCATION

APPLETON™

Powertite™ Series Pin and Sleeve Plugs, Connectors and Receptacles

NEC/CEC:
Listed for Ordinary (Unclassified) Locations
NEMA 3, 3R, 4, 4X

PLUGS AND RECEPTACLES: NEC/CEC ORDINARY LOCATION

APPLETON™

Features at a Glance

| Amp | Receptacle Types | | | | Contacts | | | Reverse Service | | |
|-----|------------------|--------------------------|-------------------|-----------------------|-------------------------------------|-----------------------------------|----------------------------|-----------------------|----------|--------------|
| | Grounding Styles | Weatherproof Spring Door | NEMA 4X Screw Cap | Raintight Clamp Cover | Brass with Beryllium Copper Springs | Copper with Borosilicate Bearings | Split-type Copper Contacts | Brass Ground Contacts | In Field | Factory Only |
| 30 | 1 and 2 | X | X | | X | | | Style 2 | X | |
| 60 | 1 and 2 | X | X | | X | | | Style 2 | X | |
| 100 | 1 and 2 | X | X | | X | | | Style 2 | X | |
| 150 | 2 | X | X | | X ⊙ | | | Style 2 | X | |
| 200 | 1 and 2 | X ▼ | | X ▼ | | | X | Style 2 | X ⊕ | |
| 400 | 1 and 2 | | | | | X | | Style 2 | | X |

Application Chart

| Grounding Style | Wire/Pole | Single Phase | | Grounding Style | Wire/Pole | Three Phase | |
|-----------------------------------|-----------|--------------|-----------------|-----------------------------------|-----------|--------------|-----------------|
| | | With Neutral | Without Neutral | | | With Neutral | Without Neutral |
| Style 1 (Shell Only) | 2W, 2P | L1+N+G | L1+L2+G | Style 1 (Shell Only) | 2W, 2P | | |
| | 3W, 3P | L1+L2+N+G | | | 3W, 3P | | L1+L2+L3+G |
| | 4W, 4P | | | | 4W, 4P | L1+L2+L3+N+G | |
| Style 2 (Shell and Extra Pole) | 2W, 3P | L1+N+G | L1+L2+G | Style 2 (Shell and Extra Pole) | 2W, 3P | | |
| | 3W, 4P | L1+L2+N+G | | | 3W, 4P | | L1+L2+L3+G |

Powertite™ Horsepower Ratings Plug may be withdrawn in an emergency if within these maximum HP ratings. Not for normal starting/stopping.

| Phase Motor | Amps | Motor Horsepower | | | | Phase Motor | Amps | Motor Horsepower | | | |
|---|------|------------------------------|---------|---------|---------|-----------------------------------|------|------------------|---------|---------|---------|
| | | 115 Vac | 230 Vac | 480 Vac | 600 Vac | | | 115 Vac | 230 Vac | 480 Vac | 600 Vac |
| 3-Phase 3W, 3P; 3W, 4P; or 4W, 4P | 30 | 3 | 7-1/2 | 15 | 20 | 1-Phase 2W, 2P or 2W, 3P | 30 | 2 | 3 | 10 | 10 |
| | 60 | 7-1/2 | 15 | 30 | 30 | | 60 | 3 | 10 | 20 | 20 |
| | 100 | 10 | 20 | 40 | 40 | | 100 | 7-1/2 | 15 | 30 | 30 |
| | 150 | Do Not Disconnect Under Load | | | | | 200 | 15 | 30 | 40 | 40 |
| | 200 | 20 | 40 | 50 | 50 | | | | | | |

Range of Wire Sizes Accommodated in Powertite™ Plug and Receptacle Terminals

60 °C (140 °F) minimum wire ratings.

| 30, 60, 100, and 150 Amp | | | | 200 Amp | | | 400 Amp | | |
|--------------------------|---------------------------|------------|----------|---------------------------|----------------|----------------|-----------------------------|----------------|----------------|
| Amps | Wire Recess Dia. (Inches) | Wire Range | | Wire Recess Dia. (Inches) | Conductor Size | Type Conductor | Solder Recess Dia. (Inches) | Conductor Size | Type Conductor |
| 30 | .281 | #10 – #6 | #10 – #8 | 0.687 | 250 | General Wire | 0.84 | 500 MCM | General Wire |
| 60 | .312 | #6 – #2 | #6 – #4 | | 4/0 | General Wire | | 400 MCM | Flex. Cable |
| 100 | .391 | #4 – #1 | #4 – #2 | | 4/0 | Flex. Cable | | 400 MCM | Extra Flex. |
| 150 | .525 | #2 – 2/0 | #2 – 2/0 | | 3/0 | Flex. Cable | 1.25 | 1000 MCM | General wire |
| | | | | | 3/0 | Extra Flex. | | 900 MCM | General Wire |
| | | | | | 2/0 | Flex. Cable | | 800 MCM | Extra Flex. |

▼ NEMA 4X.

⊕ For receptacle only.

⊙ Copper with beryllium copper springs.

Powerlite™ 30 Amp Pin and Sleeve Plugs and Receptacles

600 Vac, 250 Vdc, 50-400 Hz

Pressure Wire Terminals – Wire Recess Diameter: .281". Wire Size Range: #10—#6 Building; #10—#8 Extra Flex.

NEC/CEC:

Listed for Ordinary (Unclassified) Locations
NEMA 3, 3R, 4, 4X



| Grounding Style | Wire/Pole | Receptacle with AEE Mounting Box ① | Hub Size (Inches) | Receptacle Only ③ | Metallic Clamping Ring Plug ② | Nonmetallic Clamping Ring Plug ②④ | Plug Cable Dia. (Inches) |
|-----------------------------------|--------------|------------------------------------|-------------------|-------------------|-------------------------------|-----------------------------------|--------------------------|
| Style 1 (Shell Only) | 2W, 2P | ADRE3022-50 | 1/2 | ADR3022 | ACP3022BC | — | .500 to 1.250 |
| | | ADRE3022-75 | 3/4 | | | | |
| | 3W, 3P | ADRE3033-75 | 3/4 | ADR3033 | ACP3033BC | — | .500 to 1.250 |
| | | ADRE3033-100 | 1 | | | | |
| 4W, 4P | ADRE3044-75 | 3/4 | ADR3044 | ACP3044BC | — | .500 to 1.250 | |
| | ADRE3044-100 | 1 | | | | | |
| Style 2 (Shell and Extra Pole) | 2W, 3P | ADRE3023-75 | 3/4 | ADR3023 | ACP3023BC | — | .500 to 1.250 |
| | | ADRE3023-100 | 1 | | | | |
| | 3W, 4P | ADRE3034-75 | 3/4 | ADR3034 | ACP3034BC | NMACP3034BC | .500 to 1.250 |
| | | ADRE3034-100 | 1 | | | | |

Receptacles are provided with spring door and screw cover.
For Reverse Service, add suffix **-RS** to Catalog Number.
For Special Polarization, add suffix **-P4** to Catalog Number.

Horsepower Ratings for Emergency Disconnect Under Load

Plug may be withdrawn in an emergency if within these maximum HP ratings. Not for normal starting and stopping.

| Phase Motor | Wire/Pole | Motor Horsepower | | | |
|-------------|---------------------------|------------------|---------|---------|---------|
| | | 120 Vac | 240 Vac | 480 Vac | 600 Vac |
| 1-Phase | 2W, 2P or 2W, 3P | 2HP | 3HP | 10HP | 10HP |
| 3-Phase | 3W, 3P; 3W, 4P; or 4W, 4P | 3HP | 7-1/2HP | 15HP | 20HP |

① For additional mounting boxes, see Aluminum Mounting Boxes.

② Plug and receptacle combination is NEMA 4X rated when clamping ring is fully tightened on receptacle.

③ Receptacle is NEMA 4X rated when screw cover is fully engaged when the receptacle is not in use.

④ Reverse service and special polarization options are not available on non-metallic plugs.

Powertite™ 30 Amp Pin and Sleeve Connectors and Plugs

600 Vac, 250 Vdc, 50-400 Hz

Pressure Wire Terminals – Wire Recess Diameter: .281". Wire Size Range: #10—#6 Building; #10—#8 Extra Flex.

NEC/CEC:

Listed for Ordinary (Unclassified) Locations

NEMA 3, 3R, 4, 4X

PLUGS AND RECEPTACLES: NEC/CEC ORDINARY LOCATION

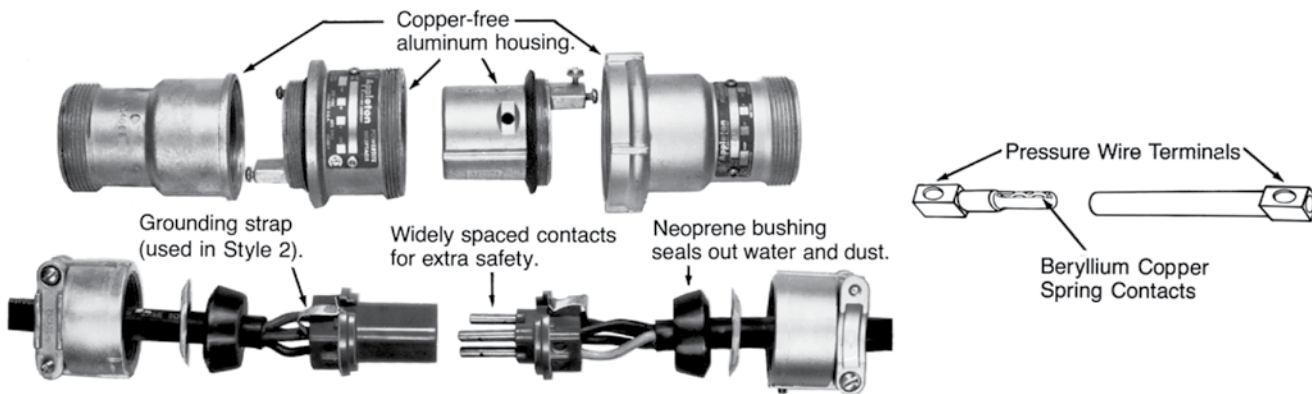


| Grounding Style | Wire/Pole | Connector Body Only | Metallic Clamping Ring Plug ① | Connector/Plug Cable Dia. (Inches) |
|-----------------------------------|-----------|---------------------|-------------------------------|------------------------------------|
| Style 1 (Shell Only) | 2W, 2P | ARC3022BC | ACP3022BC | .500 to 1.250 |
| | 3W, 3P | ARC3033BC | ACP3033BC | .500 to 1.250 |
| | 4W, 4P | ARC3044BC | ACP3044BC | .500 to 1.250 |
| Style 2 (Shell and Extra Pole) | 2W, 3P | ARC3023BC | ACP3023BC | .500 to 1.250 |
| | 3W, 4P | ARC3034BC | ACP3034BC | .500 to 1.250 |

For Reverse Service, add suffix **-RS** to Catalog Number.

For Special Polarization, add suffix **-P4** to Catalog Number.

Pin and Sleeve Design



Energized contacts deeply recessed to reduce danger of accidental touching, minimize possibility of exposed arcs. Insulator quenches arcing, and is resistant to abnormal heat and to fire.

Plug mechanical cable clamps provide strain relief conductor connections, allow easy cable replacement.

Pressure wire terminals allow cable to be readily replaced when necessary. Terminal screws grip conductors firmly. Spring contacts provide constant pressure.

① Plug and connector body combination is NEMA 4X rated when clamping ring is fully tightened on connector body.

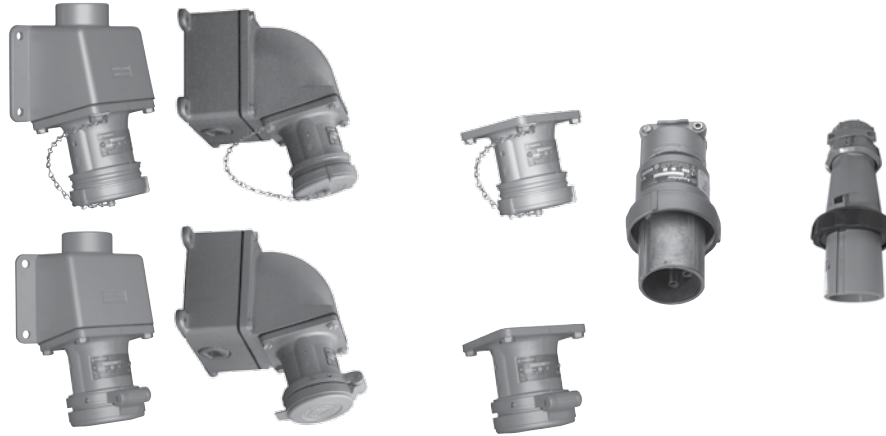
Powerlite™ 60 Amp Pin and Sleeve Plugs and Receptacles

600 Vac, 250 Vdc, 50-400 Hz

Pressure Wire Terminals – Wire Recess Diameter: .312". Wire Size Range: #6—#2 Building; #6—#4 Extra Flex.

NEC/CEC:

Listed for Ordinary (Unclassified) Locations
NEMA 3, 3R, 4, 4X



PLUGS AND RECEPTACLES: NEC/CEC ORDINARY LOCATION

APPLETON™

| Grounding Style | Wire/Pole | Receptacle with AEE Mounting Box ① | Receptacle with AJA Mounting Box ① | Hub Size (Inches) | Receptacle Only ③ | Metallic Clamping Ring Plug ② | Nonmetallic Clamping Ring Plug ②④ | Plug Cable Dia. (Inches) |
|-----------------------------------|-----------|------------------------------------|------------------------------------|-------------------|-------------------|-------------------------------|-----------------------------------|--------------------------|
| Style 1 (Shell Only) | 2W, 2P | ADRE6022-100 | ADJA6022-100 | 1 | ADR6022 | ACP6022BC | — | .500 to 1.250 |
| | | ADRE6022-125 | ADJA6022-125 | 1-1/4 | | | | |
| | 3W, 3P | ADRE6033-100 | ADJA6033-100 | 1 | ADR6033 | ACP6033BC | — | .500 to 1.250 |
| | | ADRE6033-125 | ADJA6033-125 | 1-1/4 | | | | |
| | 4W, 4P | ADRE6044-125 | ADJA6044-125 | 1-1/4 | ADR6044 | ACP6044BC | — | .500 to 1.250 |
| | | ADRE6044-150 | ADJA6044-150 | 1-1/2 | | | | |
| Style 2 (Shell and Extra Pole) | 2W, 3P | ADRE6023-100 | ADJA6023-100 | 1 | ADR6023 | ACP6023BC | — | .500 to 1.250 |
| | | ADRE6023-125 | ADJA6023-125 | 1-1/4 | | | | |
| | 3W, 4P | ADRE6034-125 | ADJA6034-125 | 1-1/4 | ADR6034 | ACP6034BC | NMACP6034BC | .500 to 1.250 |
| | | ADRE6034-150 | ADJA6034-150 | 1-1/2 | | | | |

Receptacles are provided with spring door and screw cover.
For Reverse Service, add suffix **-RS** to Catalog Number.
For Special Polarization, add suffix **-P4** to Catalog Number.

Horsepower Ratings for Emergency Disconnect Under Load

Plug may be withdrawn in an emergency if within these maximum HP ratings. Not for normal starting and stopping.

| Phase Motor | Wire/Pole | 120 Vac | 240 Vac | 480 Vac | 600 Vac |
|-------------|---------------------------|---------|---------|---------|---------|
| 1-Phase | 2W, 2P or 2W, 3P | 3HP | 10HP | 20HP | 20HP |
| 3-Phase | 3W, 3P; 3W, 4P; or 4W, 4P | 7-1/2HP | 15HP | 30HP | 30HP |

① For additional mounting boxes, see Aluminum Mounting Boxes.

② Plug and receptacle combination is NEMA 4X rated when clamping ring is fully tightened on receptacle.

③ Receptacle is NEMA 4X rated when screw cover is fully engaged when the receptacle is not in use.

④ Reverse service and special polarization options are not available on non-metallic plugs.

Powertite™ 60 Amp Pin and Sleeve Connectors and Plugs

600 Vac, 250 Vdc, 50-400 Hz

Pressure Wire Terminals – Wire Recess Diameter: .312". Wire Size Range: #6—#2 Building; #6—#4 Extra Flex.

NEC/CEC:
Listed for Ordinary (Unclassified) Locations
NEMA 3, 3R, 4, 4X

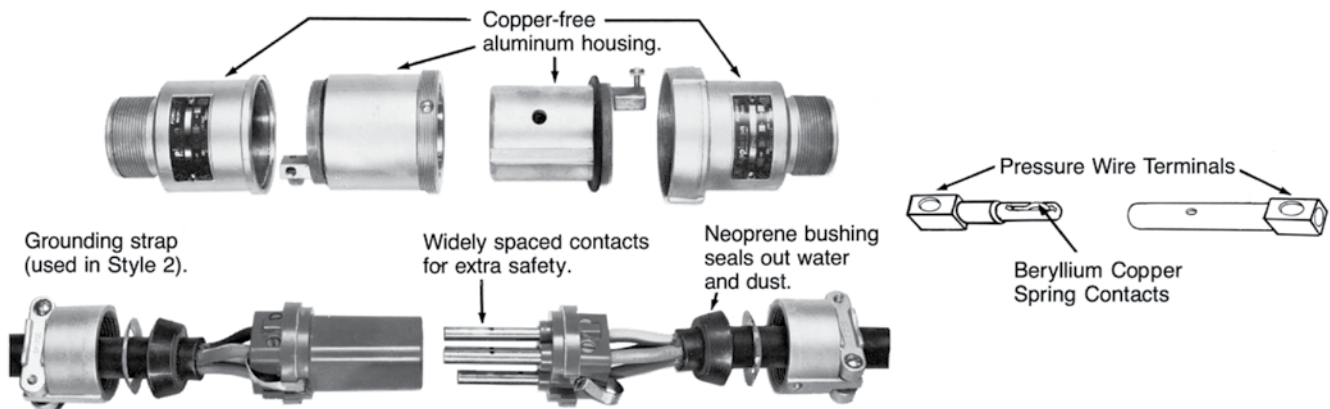
PLUGS AND RECEPTACLES: NEC/CEC ORDINARY LOCATION



| Grounding Style | Wire/Pole | Connector Body Only | Metallic Clamping Ring Plug ① | Connector/Plug Cable Dia. (Inches) |
|-----------------------------------|-----------|---------------------|-------------------------------|------------------------------------|
| Style 1 (Shell Only) | 2W, 2P | ARC6022BC | ACP6022BC | .500 to 1.250 |
| | 3W, 3P | ARC6033BC | ACP6033BC | .500 to 1.250 |
| | 4W, 4P | ARC6044BC | ACP6044BC | .500 to 1.250 |
| Style 2 (Shell and Extra Pole) | 2W, 3P | ARC6023BC | ACP6023BC | .500 to 1.250 |
| | 3W, 4P | ARC6034BC | ACP6034BC | .500 to 1.250 |

For Reverse Service, add suffix **-RS** to Catalog Number.
For Special Polarization, add suffix **-P4** to Catalog Number.

Pin and Sleeve Design



Energized contacts deeply recessed to reduce danger of accidental touching, minimize possibility of exposed arcs. Insulator quenches arcing, and is resistant to abnormal heat and to fire.

Plug mechanical cable clamps provide strain relief at conductor connections, allow easy cable replacement.

Pressure wire terminals allow cable to be readily replaced when necessary. Terminal screws grip conductors firmly. Spring contacts provide constant pressure.

① Plug and connector body combination is NEMA 4X rated when clamping ring is fully tightened on connector body.

Powertite™ 100 and 150 Amp Pin and Sleeve Plugs and Receptacles

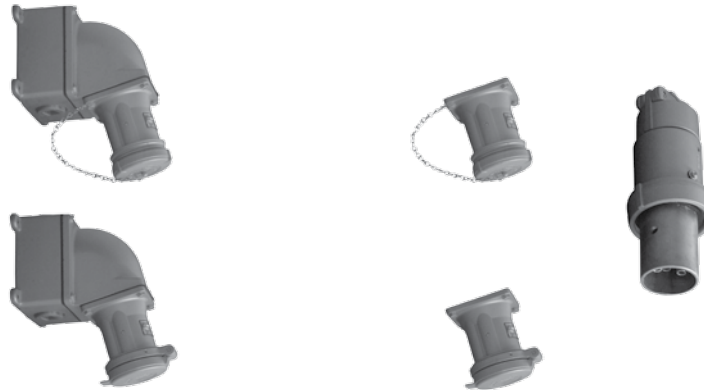
600 Vac, 250 Vdc, 50-400 Hz

Pressure Wire Terminals – 100 Amp: Wire Recess Diameter: .391". Wire Size Range: #4—#1 Building; #4—#2 Extra Flex.

150 Amp: Wire Recess Diameter: .525". Wire Size Range: #2—2/0 Building; #2—#2/0 Extra Flex.

NEC/CEC:

Listed for Ordinary (Unclassified) Locations
NEMA 3, 3R, 4, 4X



PLUGS AND RECEPTACLES: NEC/CEC ORDINARY LOCATION

APPLETON™

| Grounding Style | Wire/Pole | Receptacle with AJA Mounting Box ① | Hub Size (Inches) | Receptacle Only ③ | Clamping Ring Plug ② | Plug Cable Dia. (Inches) |
|--|-----------|------------------------------------|-------------------|-------------------|----------------------|--------------------------|
| 100 Amp Style 1 (Shell Only) | 2W, 2P | ADJA1022-125 | 1-1/4 | ADR1022 | ACP1022CD | .875 to 1.906 |
| | | ADJA1022-150 | 1-1/2 | | | |
| | 3W, 3P | ADJA1033-125 | 1-1/4 | ADR1033 | ACP1033CD | |
| | | ADJA1033-150 | 1-1/2 | | | |
| | 4W, 4P | ADJA1044-150 | 1-1/2 | ADR1044 | ACP1044CD | |
| | | ADJA1044-200 | 2 | | | |
| 100 Amp Style 2 (Shell and Extra Pole) | 2W, 3P | ADJA1023-125 | 1-1/4 | ADR1023 | ACP1023CD | |
| | | ADJA1023-150 | 1-1/2 | | | |
| | 3W, 4P | ADJA1034-150 | 1-1/2 | ADR1034 | ACP1034CD | |
| | | ADJA1034-200 | 2 | | | |
| 150 Amp Style 2 (Shell and Extra Pole) | 3W, 4P | ADJA15034-150 | 1-1/2 | ADR15034 | ACP15034CD | |
| | | ADJA15034-200 | 2 | | ACP15034DE | 1.250 to 2.187 |

Receptacles are provided with spring door and screw cover.

For Reverse Service, add suffix **-RS** to Catalog Number.

For Special Polarization for 100 Amp units, add suffix **-P4** to Catalog Number. (Not available for 150 Amp units.)

Horsepower Ratings for Emergency Disconnect Under Load

Not for normal starting and stopping, but plug may be withdrawn in an emergency if within these maximum HP ratings.

| Amp | Motor Phase | Wire/Pole | Motor Horsepower | | | |
|-----|-------------|---------------------------|------------------------------|---------|---------|---------|
| | | | 120 Vac | 240 Vac | 480 Vac | 600 Vac |
| 100 | 1-Phase | 2W, 2P or 2W, 3P | 7-1/2HP | 15HP | 30HP | 30HP |
| | 3-Phase | 3W, 3P; 3W, 4P; or 4W, 4P | 10HP | 20HP | 40HP | 40HP |
| 150 | 3-Phase | 3W, 4P | Do Not Disconnect Under Load | | | |

① For additional mounting boxes, see Aluminum Mounting Boxes.

② Plug and receptacle combination is NEMA 4X rated when clamping ring is fully tightened on receptacle.

③ Receptacle is NEMA 4X rated when screw cover is fully engaged when the receptacle is not in use.

Powertite™ 100 and 150 Amp Pin and Sleeve Connectors and Plugs

600 Vac, 250 Vdc, 50-400 Hz

Pressure Wire Terminals – 100 Amp: Wire Recess Diameter: .391". Wire Size Range: #4—#1 Building; #4—#2 Extra Flex.

150 Amp: Wire Recess Diameter: .525". Wire Size Range: #2—2/0 Building; #2—#2/0 Extra Flex.

NEC/CEC:

Listed for Ordinary (Unclassified) Locations
NEMA 3, 3R, 4, 4X

PLUGS AND RECEPTACLES: NEC/CEC ORDINARY LOCATION

APPLETON™

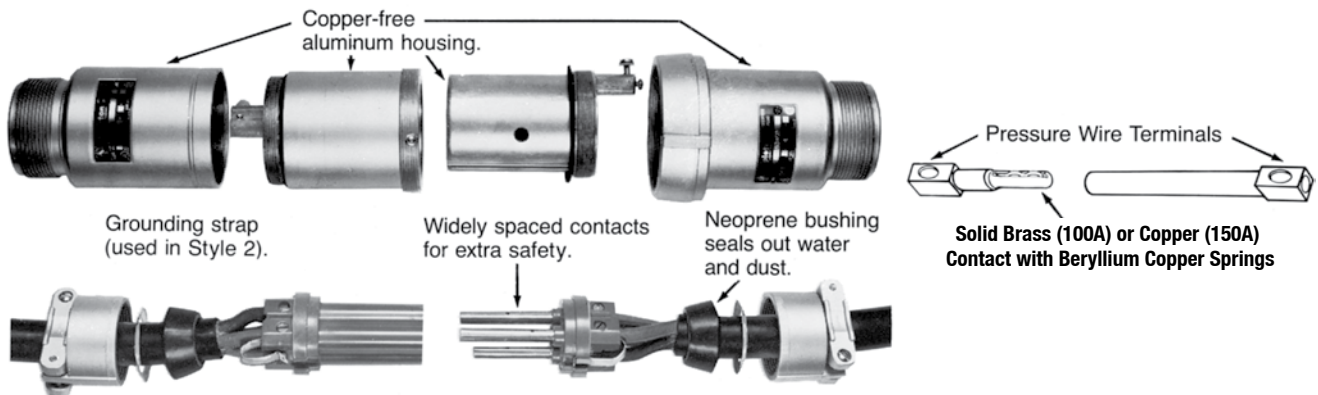


| Grounding Style | Wire/Pole | Connector Body Only | Clamping Ring Plug ① | Connector/Plug Cable Dia. (Inches) |
|--|-----------|---------------------|----------------------|------------------------------------|
| 100 Amp Style 1 (Shell Only) | 2W, 2P | ARC1022CD | ACP1022CD | .875 to 1.906 |
| | 3W, 3P | ARC1033CD | ACP1033CD | .875 to 1.906 |
| | 4W, 4P | ARC1044CD | ACP1044CD | .875 to 1.906 |
| 100 Amp Style 2 (Shell and Extra Pole) | 2W, 3P | ARC1023CD | ACP1023CD | .875 to 1.906 |
| | 3W, 4P | ARC1034CD | ACP1034CD | .875 to 1.906 |
| 150 Amp Style 2 (Shell and Extra Pole) | 3W, 4P | ARC15034CD | ACP15034CD | .875 to 1.906 |
| | 3W, 4P | ARC15034DE | ACP15034DE | 1.250 to 2.187 |

For Reverse Service, add suffix **-RS** to Catalog Number.

For Special Polarization for 100 Amp units, add suffix **-P4** to Catalog Number. (Not available for 150 Amp units.)

Pin and Sleeve Design



Energized contacts deeply recessed to reduce danger of accidental touching, minimize possibility of exposed arcs. Insulator quenches arcing, and is resistant to abnormal heat and to fire.

Plug mechanical cable clamps provide strain relief at conductor connections, allow easy cable replacement.

Pressure wire terminals allow cable to be readily replaced when necessary. Terminal screws grip conductors firmly. Spring contacts provide constant pressure.

① Plug and receptacle combination is NEMA 4X rated when clamping ring is fully tightened on receptacle.

Powerlite™ 30, 60, 100, and 150 Amp Caps For Plug

NEC/CEC:
Listed for Ordinary (Unclassified) Locations
NEMA 3, 3R, 4, 4X

Applications

- Protects insulation and plug contacts from excessive moisture, dirt, dust, and corrosion when portable equipment is not in use.
- For use with 30 Amp 3-Pole and 4-Pole, 60 Amp 4-Pole and 100 and 150 Amp 4-Pole plugs.
- Cap is secured to plug by aviation cable. When in use the cap is held in place with standard plug clamping ring.

Standard Materials

- Cap: ABS plastic

Ordering Information

| Catalog Number | Amp | For Use With |
|----------------|-----|--------------|
| ACPCAP3034 | 30 | ACP3023BC |
| | | ACP3033BC |
| | | ACP3034BC |
| | | ACP3044BC |
| ACPCAP6004 | 60 | ACP6034BC |
| | | ACP6044BC |
| ACPCAP1004 | 100 | ACP1034CD |
| | | ACP1044CD |
| | 150 | ACP15034CD |
| | | ACP15034DE |



PLUGS AND RECEPTACLES: NEC/CEC ORDINARY LOCATION

APPLETON™

Aluminum Mounting Boxes

For Powertite™ 30, 60, 100, and 150 Amp Receptacles

NEC/CEC:
Listed for Ordinary (Unclassified) Locations
NEMA 3, 3R, 4, 4X

PLUGS AND RECEPTACLES: NEC/CEC ORDINARY LOCATION

APPLETON™

30 Amp



| Hub Size (Inches) | AEE | AERH | AERC | AERA |
|-------------------|-------|--------|--------|--------|
| 1/2 | AEE13 | AERH13 | AERC13 | AERA13 |
| 3/4 | AEE23 | AERH23 | AERC23 | AERA23 |
| 1 | AEE33 | AERH33 | AERC33 | AERA33 |

60 and 100 Amp



| Hub Size (Inches) | AEE | AERH | AERC | AERA |
|-------------------|-------|--------|--------|--------|
| 1 | AEE36 | AERH36 | AERC36 | AERA36 |
| 1-1/4 | AEE46 | AERH46 | AERC46 | AERA46 |
| 1-1/2 | AEE56 | AERH56 | AERC56 | AERA56 |

60, 100, and 150 Amp



| Hub Size (Inches) | AJA Back Box and Adapter ① | Angle Adapter Only |
|-------------------|----------------------------|--------------------|
| 1 | AJA310 | |
| 1-1/4 | AJA410 | AJA100 |
| 1-1/2 | AJA510 | |
| 2 | AJA610 | |

Replacement Receptacle Mounting Gasket

| Amp | Back Box Type | Part Number |
|--------------|-----------------------|-------------|
| 30 | AEE, AERH, AERC, AERA | 69060871000 |
| 60, 100 | AEE, AERH, AERC, AERA | 69060567000 |
| 60, 100, 150 | AJA | 69009497000 |

① Feed-Thru box furnished with one close-up plug in bottom recessed hub.

Powerlite™ 30, 60, 100, and 150 Amp Replacement Interiors

600 Vac, 250 Vdc, 50-400 Hz

NEC/CEC:
Listed for Ordinary (Unclassified) Locations
NEMA 3, 3R, 4, 4X

30 Amp ①



| Grounding Style | Wire/Pole | Receptacle | Plug | Receptacle | Plug |
|-----------------------------------|-----------|------------|----------|------------|----------|
| Style 1 (Shell Only) | 2W, 2P | ARI-3022 | API-3022 | — | — |
| | 3W, 3P | ARI-3033 | API-3033 | — | — |
| | 4W, 4P | ARI-3044 | API-3044 | — | — |
| Style 2 (Shell and Extra Pole) | 2W, 3P | — | — | ARI-3023 | API-3023 |
| | 3W, 4P | — | — | ARI-3034 | API-3034 |

60 Amp ①



| Grounding Style | Wire/Pole | Receptacle | Plug | Receptacle | Plug |
|-----------------------------------|-----------|------------|----------|------------|----------|
| Style 1 (Shell Only) | 2W, 2P | ARI-6022 | API-6022 | — | — |
| | 3W, 3P | ARI-6033 | API-6033 | — | — |
| | 4W, 4P | ARI-6044 | API-6044 | — | — |
| Style 2 (Shell and Extra Pole) | 2W, 3P | — | — | ARI-6023 | API-6023 |
| | 3W, 4P | — | — | ARI-6034 | API-6034 |

100 and 150 Amp ①



| Grounding Style | Wire/Pole | Receptacle | Plug | Receptacle | Plug |
|--|-----------|------------|----------|------------|-----------|
| Style 1 (Shell Only) | 2W, 2P | ARI-1022 | API-1022 | — | — |
| | 3W, 3P | ARI-1033 | API-1033 | — | — |
| | 4W, 4P | ARI-1044 | API-1044 | — | — |
| Style 2 (Shell and Extra Pole) | 2W, 3P | — | — | ARI-1023 | API-1023 |
| | 3W, 4P | — | — | ARI-1034 | API-1034 |
| 150 Amp Style 2 (Shell and Extra Pole) | 3W, 4P | — | — | ARI-15034 | API-15034 |

① Pins and sleeves are not sold separately.







Powerlite™ 30, 60, 100, and 150 Amp Replacement Parts

600 Vac, 250 Vdc, 50-400 Hz

NEC/CEC:
Listed for Ordinary (Unclassified) Locations
NEMA 3, 3R, 4, 4X

PLUGS AND RECEPTACLES: NEC/CEC ORDINARY LOCATION

APPLETON™

| | Description | Catalog Number |
|---|--|--------------------|
| ACP Plug Clamping Ring — Includes Gasket | | |
|  | 30 Amp — 2-, 3- and 4-Pole | CLMPR30 |
| | 30 Amp — 3-Wire, 4-Pole | 30CRING ① |
| | 60 Amp — 2- and 3-Pole | CLMPR23P60 |
| | 60 Amp — 4-Pole | CLMPR4P60 |
| | 100 Amp — 2- and 3-Pole | CLMPR23P100 |
| | 100 and 150 Amp — 4-Pole | CLMPR4P100 |
| Receptacle Spring Cover — Includes Gasket and Chain | | |
|  | 30 Amp — 2-, 3- and 4-Pole | PTSC30 |
| | 60 Amp — 2- and 3-Pole | PTSC60A |
| | 60 Amp — 4-Pole | PTSC60B |
| | 100 Amp — 2- and 3-Pole | PTSC100A |
| | 100 and 150 Amp — 4-Pole | PTSC100B |
| Receptacle Threaded Cover — Includes Gasket and Chain | | |
|  | 30 Amp — 2, 3, and 4-Pole | PTTC30 |
| | 30 Amp — 3 Wire, 4-Pole | 30SCAP ① |
| | 60 Amp — 2- and 3-Pole | PTTC60A |
| | 60 Amp — 4-Pole | PTTC60B |
| | 100 Amp — 2- and 3-Pole | PTTC100A |
| | 100 and 150 Amp — 4-Pole | PTTC100B |
| Bushing Bags and Crown Bushings for Plugs and Cable Connectors | | |
|  | 30 Amp | PTGB30 |
| | 60 Amp | PTGB60 |
| | 100 Amp and 150 Amp (CD) | PTGBCD |
| | 150 Amp (DE) | PTGBDE |
| Universal Plug Bushing | | |
|  | 30 and 60 Amp Cable Range 0.300" – 9.00" Package of 10 | PTGBUBC |
| Receptacle Ground Lug Kit | | |
|  | 30 Amp Receptacle Ground Lug Kit. Wire Well ID 0.272" | PTRGL30 |
| | 60 Amp Receptacle Ground Lug Kit. Wire Well ID 0.312" | PTRGL60 |
| | 100 Amp Receptacle Ground Lug Kit. Wire Well ID 0.389" ② | PTRGL100 |

① For use with 30 Amp Powerlite™ plugs and WSR/WSRD/JBR/EBR/DBR receptacles.
② Ground lug is cast into the housing after 09/2008.

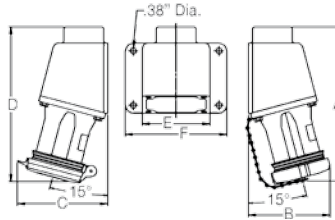
Powerlite™ 30, 60, 100, and 150 Amp Mounted Receptacle

600 Vac, 250 Vdc, 50-400 Hz

NEC/CEC:
Listed for Ordinary (Unclassified) Locations
NEMA 3, 3R, 4, 4X

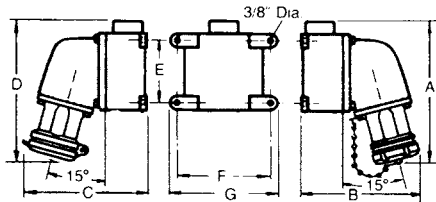
Dimensions in Millimeters (Inches)

Receptacle Mounted on AEE Box



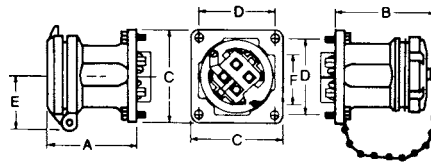
| Amp | Dimensions in Millimeters (Inches) | | | | | |
|-----|------------------------------------|--------------|--------------|---------------|--------------|--------------|
| | A | B | C | D | E | F |
| 30 | 174.7 (6.88) | 89.6 (3.45) | 100.3 (3.95) | 181.1 (7.13) | 107.9 (4.25) | 127.0 (5.00) |
| 60 | 247.6 (9.75) | 120.1 (4.73) | 126.4 (4.98) | 254.0 (10.00) | 136.6 (5.38) | 162.0 (6.38) |

Receptacle Mounted on AJA Box



| Amp | Dimensions in Millimeters (Inches) | | | | | | |
|-------------|------------------------------------|--------------|--------------|---------------|--------------|--------------|---------------|
| | A | B | C | D | E | F | G |
| 60 | 244.6 (9.63) | 203.2 (8.00) | 223.7 (8.81) | 271.5 (10.69) | 123.9 (4.88) | 174.7 (6.88) | 200.15 (7.88) |
| 100 and 150 | 290.5 (11.44) | 228.6 (9.00) | 233.4 (9.19) | 300.2 (11.82) | 123.9 (4.88) | 174.7 (6.88) | 200.15 (7.88) |

ADR Receptacle



| Amp | No. Poles | Dimensions in Millimeters (Inches) | | | | | |
|-------------|-----------|------------------------------------|--------------|--------------|-------------|-------------|-------------|
| | | A | B | C | D | E | F |
| 30 | 2,3,4 | 71.1 (2.80) | 81.0 (3.19) | 85.8 (3.38) | 69.0 (2.72) | 52.3 (2.06) | 69.8 (2.75) |
| 60 | 2,3 | 123.9 (4.88) | 117.6 (4.63) | 107.9 (4.25) | 88.9 (3.50) | 58.6 (2.31) | 78.7 (3.10) |
| 60 | 4 | 123.9 (4.88) | 117.6 (4.63) | 107.9 (4.25) | 88.9 (3.50) | 61.9 (2.44) | 85.0 (3.35) |
| 100 | 2,3 | 129.5 (5.10) | 139.7 (5.50) | 107.9 (4.25) | 88.9 (3.50) | 61.9 (2.44) | 86.3 (3.40) |
| 100 and 150 | 4 | 129.5 (5.10) | 139.7 (5.50) | 107.9 (4.25) | 88.9 (3.50) | 65.0 (2.56) | 91.4 (3.60) |

Powertite™ 30, 60, 100, and 150 Amp Connector and Plug

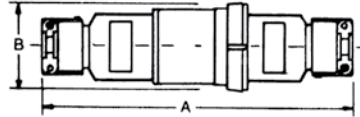
600 Vac, 250 Vdc, 50-400 Hz

NEC/CEC:
Listed for Ordinary (Unclassified) Locations
NEMA 3, 3R, 4, 4X

PLUGS AND RECEPTACLES: NEC/CEC ORDINARY LOCATION

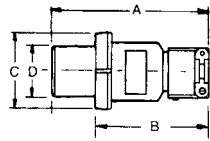
Dimensions in Millimeters (Inches)

ARC Cable Connector



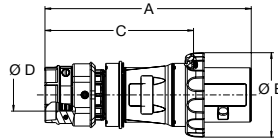
| Amp | Dimensions in Millimeters (Inches) | |
|-----|------------------------------------|--------------|
| | A | B |
| 30 | 266.7 (10.50) | 79.5 (3.13) |
| 60 | 336.5 (13.25) | 96.7 (3.81) |
| 100 | 406.4 (16.00) | 107.9 (4.25) |
| 150 | 406.4 (16.00) | 107.9 (4.25) |

ACP Plug



| Amp | No. Poles | Dimensions in Millimeters (Inches) | | | |
|----------|-----------|------------------------------------|--------------|--------------|-------------|
| | | A | B | C | D |
| 30 | 2,3,4 | 152.4 (6.00) | 120.6 (4.75) | 79.5 (3.13) | 47.2 (1.86) |
| 60 | 2,3 | 198.3 (7.81) | 125.4 (4.94) | 88.9 (3.50) | 56.6 (2.23) |
| 60 | 4 | 198.3 (7.81) | 125.4 (4.94) | 96.7 (3.81) | 64.7 (2.55) |
| 100 | 2,3 | 266.7 (10.50) | 168.4 (6.63) | 101.6 (4.00) | 62.7 (2.47) |
| 100 | 4 | 266.7 (10.50) | 168.4 (6.63) | 107.9 (4.25) | 69.0 (2.72) |
| 150 (CD) | 4 | 266.7 (10.50) | 168.4 (6.63) | 107.9 (4.25) | 69.0 (2.72) |
| 150 (DE) | 4 | 340.3 (13.40) | 247.1 (9.73) | 107.9 (4.25) | 69.0 (2.72) |

NMACP Plug



| Amp | No. Poles | Dimensions in Millimeters (Inches) | | | |
|-----|-----------|------------------------------------|--------------|--------------|---------------------------|
| | | A | B | C | D Min — Max |
| 30 | 4 | 187.0 (7.36) | 63.0 (2.48) | 145.0 (5.71) | 11.0 - 24.5 (0.43 - 0.97) |
| 60 | 4 | 245.0 (9.65) | 100.0 (3.94) | 174.0 (6.85) | 14.5 - 36.0 (0.57 - 1.42) |

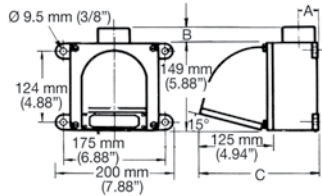
Powerlite™ 30, 60, 100, and 150 Amp Mounting Box

600 Vac, 250 Vdc, 50-400 Hz

NEC/CEC:
Listed for Ordinary (Unclassified) Locations
NEMA 3, 3R, 4, 4X

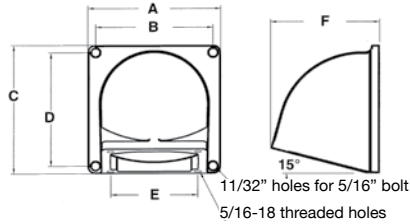
Dimensions in Millimeters (Inches)

AJA Mounting Boxes



| Amp | Hub Size (Inches) | Dimensions in Millimeters (Inches) | | |
|-----------------------|-------------------|------------------------------------|-------------|-------------|
| | | A | B ① | C |
| 60, 100 and 150 | 1 | 28.7 (1.13) | 14.2 (0.56) | 203.2 (8.0) |
| | 1-1/4 | 28.7 (1.13) | 14.2 (0.56) | 203.2 (8.0) |
| | 1-1/2 | 38.1 (1.50) | 14.2 (0.56) | 203.2 (8.0) |
| | 2 | 38.1 (1.50) | 14.2 (0.56) | 203.2 (8.0) |

AJA100 Angle Adapter



| Dimensions in Millimeters (Inches) | | | | | |
|------------------------------------|--------------|--------------|--------------|-------------|--------------|
| A | B | C | D | E | F |
| 149.0 (5.87) | 131.5 (5.18) | 149.0 (5.87) | 131.5 (5.18) | 88.9 (3.50) | 122.1 (4.81) |

① AJA has two hubs. Close-up plug furnished in bottom recessed hub.

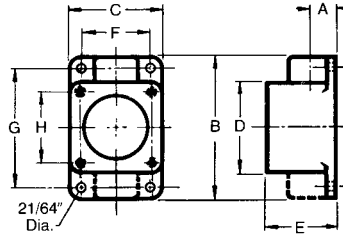
Powertite™ 30, 60, 100, and 150 Amp Mounting Box

600 Vac, 250 Vdc, 50-400 Hz

NEC/CEC:
Listed for Ordinary (Unclassified) Locations
NEMA 3, 3R, 4, 4X

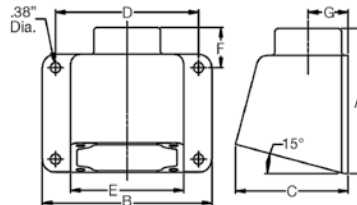
Dimensions in Millimeters (Inches)

AERA ①, AERC ② and AERH Mounting Boxes



| Amp | Hub Size (Inches) | Dimensions in Millimeters (Inches) | | | | | | | | |
|-----|-------------------|------------------------------------|--------------|--------------|--------------|-------------|-------------|--------------|-------------|-------------|
| | | A ① | B ② | C | D | E | F | G | H | J |
| 30 | 1/2 | 17.5 (0.69) | 134.8 (5.31) | 85.8 (3.38) | 85.8 (3.38) | 63.5 (2.50) | 66.8 (2.63) | 115.8 (4.56) | 69.0 (2.72) | 23.8 (0.94) |
| 30 | 3/4 | 19.0 (0.75) | 134.8 (5.31) | 85.8 (3.38) | 85.8 (3.38) | 63.5 (2.50) | 66.8 (2.63) | 115.8 (4.56) | 69.0 (2.72) | 23.8 (0.94) |
| 30 | 1 | 20.5 (0.81) | 134.8 (5.31) | 85.8 (3.38) | 85.8 (3.38) | 63.5 (2.50) | 66.8 (2.63) | 115.8 (4.56) | 69.0 (2.72) | 23.8 (0.94) |
| 60 | 1 | 20.5 (0.81) | 165.1 (6.50) | 107.9 (4.25) | 107.9 (4.25) | 79.5 (3.13) | 88.9 (3.50) | 149.3 (5.88) | 88.9 (3.50) | 35.0 (1.38) |
| 60 | 1-1/4 | 23.8 (0.94) | 165.1 (6.50) | 107.9 (4.25) | 107.9 (4.25) | 79.5 (3.13) | 88.9 (3.50) | 149.3 (5.88) | 88.9 (3.50) | 35.0 (1.38) |
| 60 | 1-1/2 | 25.4 (1.00) | 165.1 (6.50) | 107.9 (4.25) | 107.9 (4.25) | 79.5 (3.13) | 88.9 (3.50) | 149.3 (5.88) | 88.9 (3.50) | 35.0 (1.38) |

AEE Mounting Box



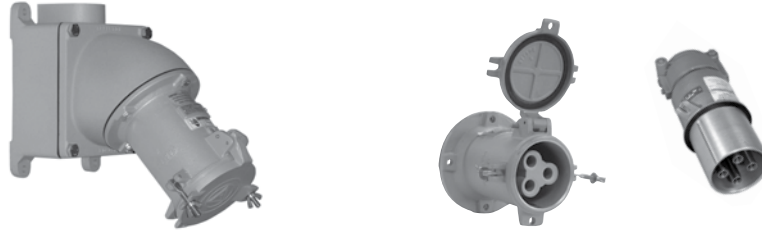
| Amp | Hub Size (Inches) | Dimensions in Millimeters (Inches) | | | | | | |
|-----|-------------------|------------------------------------|--------------|--------------|--------------|--------------|-------------|-------------|
| | | A | B | C | D | E | F | G |
| 30 | 1/2, 3/4, 1 | 104.6 (4.12) | 127.0 (5.00) | 84.5 (3.33) | 107.9 (4.25) | 85.8 (3.38) | 29.9 (1.18) | 27.9 (1.10) |
| 60 | 1, 1-1/4, 1-1/2 | 137.4 (5.41) | 162.0 (6.38) | 107.4 (4.23) | 136.6 (5.38) | 107.9 (4.25) | 38.1 (1.50) | 38.1 (1.50) |

① Dimension "A" for AERA only.
② Dimension "B" for AERC only.

Powerlite™ 200 Amp Pin and Plugs and Receptacles

600 Vac, 250 Vdc, 50-400 Hz. Sleeve Spring Door. Wire Recess Diameter: .687". Wire Size Range: 250 MCM-#2/0. Pressure Wire Terminals ①.

NEC/CEC:
Listed for Ordinary (Unclassified) Locations
NEMA 3, 3R, 4, 4X



| Grounding Style | Wire/Pole | Receptacle with AJA Mounting Box ② | Hub Size (Inches) | Receptacle Only ③ | Plug Only | Cable Dia. (Inches) |
|-----------------------------------|-----------|------------------------------------|-------------------|-------------------|-----------|---------------------|
| Style 1 (Shell Only) | 3W, 3P | ADJA20033-150 | 1-1/2 | ADR20033 | AP20033CD | .875 to 1.906 |
| | | ADJA20033-200 | 2 | | AP20033E | 1.875 to 2.500 |
| | | ADJA20033-250 | 2-1/2 | | | |
| | 4W, 4P | ADJA20044-200 | 2 | ADR20044 | AP20044CD | .875 to 1.906 |
| | | ADJA20044-250 | 2-1/2 | | AP20044E | 1.875 to 2.500 |
| | | | | | | |
| Style 2 (Shell and Extra Pole) | 2W, 3P | ADJA20023-150 | 1-1/2 | ADR20023 | AP20023CD | .875 to 1.906 |
| | | ADJA20023-200 | 2 | | AP20023E | 1.875 to 2.500 |
| | | ADJA20023-250 | 2-1/2 | | | |
| | 3W, 4P | ADJA20034-150 | 1-1/2 | ADR20034 | AP20034CD | .875 to 1.906 |
| | | ADJA20034-200 | 2 | | AP20034E | 1.875 to 2.500 |
| | | ADJA20034-250 | 2-1/2 | | | |

For Reverse Service add suffix **-RS** to Catalog Number.
For Special Polarization, add suffix **-P4** to Catalog Number.

Maximum Conductor Size

| Wire Recess Dia. (Inches) | Conductor Size | Max. Strand | Type Conductor |
|---------------------------|----------------|-------------|----------------------|
| 0.687 | 250 MCM | 37 | General Wire |
| | 4/0 | 19 | General Wire |
| | 4/0 | 259 | Flexible Cable |
| | 3/0 | 427 | Extra Flexible Cable |
| | 2/0 | 259 | Flexible Cable |
| | 2/0 | 259 | Flexible Cable |

Horsepower Ratings for Emergency Disconnect Under Load

Plug may be withdrawn in an emergency if within these maximum HP ratings. Not for normal starting and stopping.

| Motor Phase | Wire/Pole | Motor Horsepower | | | |
|-------------|---------------------------|------------------|---------|---------|---------|
| | | 120 Vac | 240 Vac | 480 Vac | 600 Vac |
| 1-Phase | 2W, 3P | 15HP | 30HP | 40HP | 40HP |
| 3-Phase | 3W, 3P; 3W, 4P; or 4W, 4P | 20HP | 40HP | 50HP | 50HP |

① Adapters for #4-#1 wire available, see Powerlite™ 200 and 400 Amp Replacement Parts.

② For additional mounting boxes, see Aluminum Mounting Boxes.

③ Receptacle meets NEMA 3R with spring door closed and NEMA 3, 3R, 4, 4X with plug fully inserted and wing nuts fully tightened or cover closed with wing nuts fully tightened.

Powertite™ 200 Amp Pin and Sleeve Plugs, Connectors and Receptacles

600 Vac, 250 Vdc, 50-400 Hz. Clamp Cover. Wire Recess Diameter: .687". Wire Size Range: 250 MCM-#2/0. Pressure Wire Terminals ①.

NEC/CEC:
Listed for Ordinary (Unclassified) Locations
NEMA 3, 3R, 4, 4X

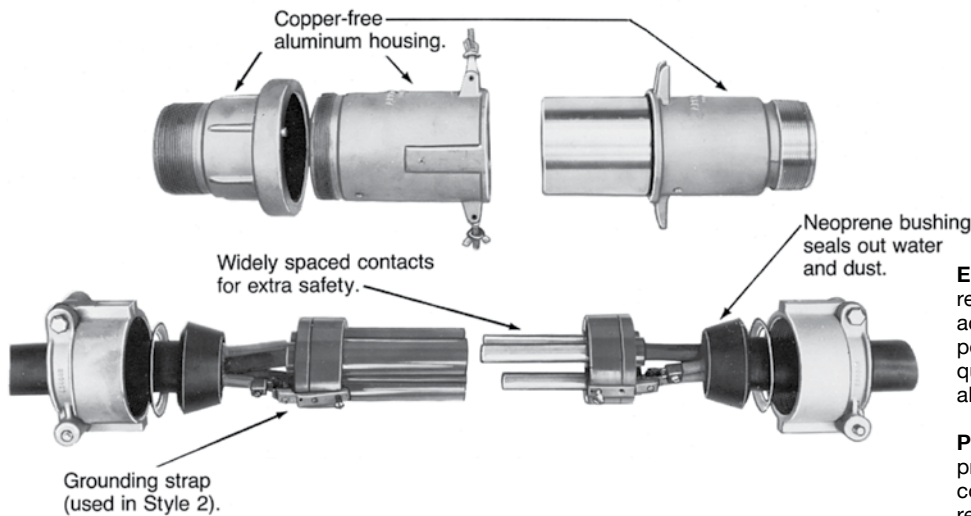
PLUGS AND RECEPTACLES: NEC/CEC ORDINARY LOCATION



| Grounding Style | Wire/Pole | Receptacle with AJA Mounting Box ① | Hub Size (Inches) | Receptacle Only ② | Connector Body Only | Plug Only ③ | Cable Dia. (Inches) |
|-----------------------------------|-----------|------------------------------------|-------------------|-------------------|---------------------|-------------|---------------------|
| Style 1 (Shell Only) | 3W, 3P | AJA20033-150 | 1-1/2 | AR20033 | ARC20033CD | AP20033CD | .875 to 1.906 |
| | | AJA20033-200 | 2 | | ARC20033E | AP20033E | 1.875 to 2.500 |
| | | AJA20033-250 | 2-1/2 | | | | |
| | 4W, 4P | AJA20044-200 | 2 | AR20044 | ARC20044CD | AP20044CD | .875 to 1.906 |
| | | AJA20044-250 | 2-1/2 | | ARC20044E | AP20044E | 1.875 to 2.500 |
| Style 2 (Shell and Extra Pole) | 2W, 3P | AJA20023-150 | 1-1/2 | AR20023 | ARC20023CD | AP20023CD | .875 to 1.906 |
| | | AJA20023-200 | 2 | | ARC20023E | AP20023E | 1.875 to 2.500 |
| | | AJA20023-250 | 2-1/2 | | | | |
| | 3W, 4P | AJA20034-150 | 1-1/2 | AR20034 | ARC20034CD | AP20034CD | .875 to 1.906 |
| | | AJA20034-200 | 2 | | ARC20034E | AP20034E | 1.875 to 2.500 |
| | | AJA20034-250 | 2-1/2 | | | | |

For Reverse Service add suffix **-RS** to Catalog Number.
For Special Polarization, add suffix **-P4** to Catalog Number.

Pin and Sleeve Design



Energized contacts deeply recessed to reduce danger of accidental touching, minimize possibility of exposed arcs. Insulator quenches arcing, and is resistant to abnormal heat and to fire.

Plug mechanical cable clamps provide strain relief at conductor connections, allow easy cable replacement.

Note: Adapters for #4-#1 wire available, see Powertite™ 200 and 400 Amp Replacement Parts.

① For additional mounting boxes, see Aluminum Mounting Boxes.

② Receptacle meets NEMA 3, 3R, 4, 4X with plug fully inserted and wing nuts fully tightened or clamp cover installed with wing nuts fully tightened.

③ Plug and connector body combination is NEMA 4X rated when wing nuts are fully tightened on connector body.

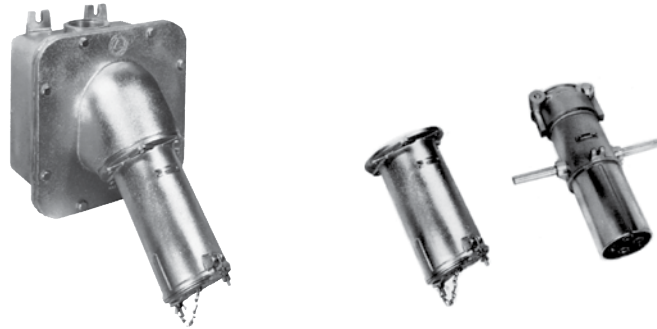
Powerlite™ 400 Amp Pin and Sleeve Plugs and Receptacles

Weatherproof

600 Vac, 250 Vdc, 50-400 Hz. Clamp Cover. Wire Recess Diameter: .84" or 1.25". Wire Size Range: 400MCM—1000MCM. Solder Wire Terminals.

NEC/CEC:

Listed for Ordinary (Unclassified) Locations
NEMA 4 – Optional



PLUGS AND RECEPTACLES: NEC/CEC ORDINARY LOCATION

APPLETON™

| Wire Recess Dia. (Inches) | Grounding Style | Wire/Pole | Receptacle with AJA Mounting Box ② | Hub Size (Inches) ③ | Receptacle Only ② | Plug Only | Cable Dia. (Inches) |
|---------------------------|--------------------------------|-----------|------------------------------------|---------------------|-------------------|-----------|---------------------|
| 0.84 ① | Style 1 (Shell Only) | 3W, 3P | AJA40033-400 | 4 | AR40033 | AP40033E | 1.875 to 2.500 |
| | | 4W, 4P | AJA40044-400 | | AR40044 | AP40044E | 1.875 to 2.500 |
| | | 4W, 4P | AJA40044-400N4 | | AR40044N4 | AP40044E | 1.875 to 2.500 |
| | Style 2 (Shell and Extra Pole) | 2W, 3P | AJA40023-400 | 4 | AR40023 | AP40023E | 1.875 to 2.500 |
| | | 3W, 4P | AJA40034-400 | | AR40034 | AP40034E | 1.875 to 2.500 |
| | | 3W, 4P | AJA40034-400N4 | | AR40034N4 | AP40034E | 1.875 to 2.500 |
| 1.25 | Style 1 (Shell Only) | 3W, 3P | AJA40133-400 | 4 | AR40133 | AP40133F | 2.500 to 3.000 |
| | | | | | | AP40133G | 3.000 to 3.500 |
| | | 4W, 4P | AJA40144-400 | 4 | AR40144 | AP40144F | 2.500 to 3.000 |
| | | | | | | AP40144G | 3.000 to 3.500 |
| | Style 2 (Shell and Extra Pole) | 4W, 4P | AJA40144-400N4 | 4 | AR40144N4 | AP40144G | 3.000 to 3.500 |
| | | 2W, 3P | AJA40123-400 | 4 | AR40123 | AP40123F | 2.500 to 3.000 |
| | | | | | | AP40123G | 3.000 to 3.500 |
| | | 3W, 4P | AJA40134-400 | 4 | AR40134 | AP40134F | 2.500 to 3.000 |
| | | | | AP40134G | 3.000 to 3.500 | | |
| | | 3W, 4P | AJA40134-400N4 | 4 | AR40134N4 | AP40134G | 3.000 to 3.500 |

Solder wire terminals standard on all models.

For Reverse Service add suffix **-RS** to Catalog Number.

For Special Polarization add suffix **-P4** to Catalog Number.

Note: Box can be turned for vertical or horizontal mounting.

Maximum Conductor Size

400 Amp not horsepower rated. Plug is for disconnecting use only — not for current rupturing.

| Solder Recess Dia. (Inches) | Conductor Size | Max. Strand | Type Conductor |
|-----------------------------|----------------|-------------|----------------------|
| 0.84 | 500 MCM | 37 | General Wire |
| | 400 MCM | 259 | Flexible Cable |
| | 400 MCM | 427 | Extra Flexible Cable |
| 1.25 | 1000 MCM | 61 | General Wire |
| | 900 MCM | 427 | Flexible Cable |
| | 800 MCM | 703 | Extra Flexible Cable |

① Pressure terminal kits available for .84 wire recess size only to convert solder terminal to pressure terminal. See Replacement Parts page.

② 400 Amp versions with the **-N4** suffix are NEMA 4 rated.

③ Has feed-thru 4" tapped openings. Supplied with one 4" to 3" reducer and one 4" close-up plug.

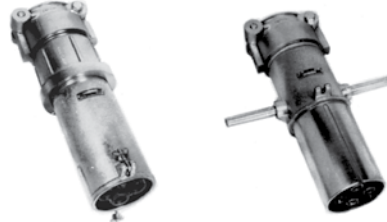
Powerlite™ 400 Amp Pin and Sleeve Connectors and Plugs

Weatherproof

600 Vac, 250 Vdc, 50-400 Hz. Wire Recess Diameter: .84" or 1.25". Wire Size Range: 400MCM—1000MCM. Solder Wire Terminals.

NEC/CEC:
Listed for Ordinary (Unclassified) Locations
NEMA 4 – Optional

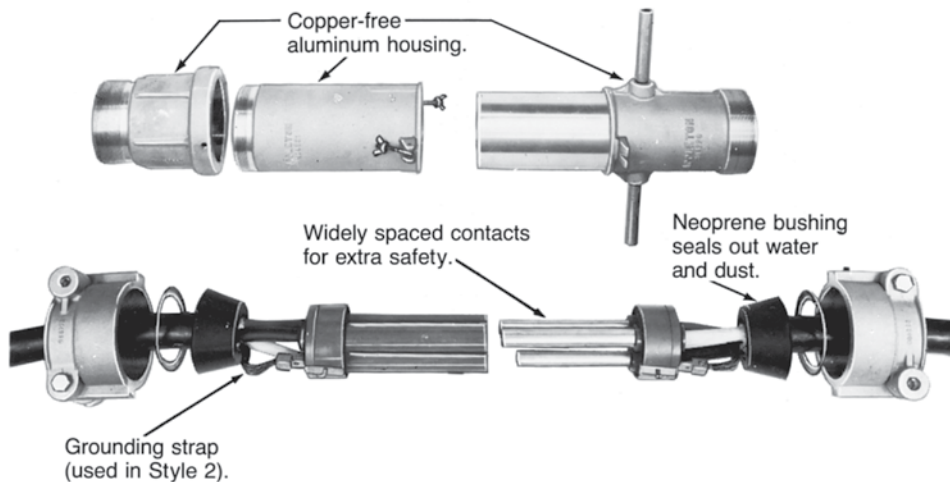
PLUGS AND RECEPTACLES: NEC/CEC ORDINARY LOCATION



| Wire Recess Dia. (Inches) | Grounding Style | Wire/Pole | Connector Body Only | Plug Only | Cable Dia. (Inches) |
|---------------------------|-----------------------------------|-----------|---------------------|----------------|---------------------|
| 0.84 Ⓢ | Style 1 (Shell Only) | 3W, 3P | ARC40033E | AP40033E | 1.875 to 2.500 |
| | | 4W, 4P | ARC40044E | AP40044E | 1.875 to 2.500 |
| | Style 2 (Shell and Extra Pole) | 2W, 3P | ARC40023E | AP40023E | 1.875 to 2.500 |
| | | 3W, 4P | ARC40034E | AP40034E | 1.875 to 2.500 |
| 1.25 | Style 1 (Shell Only) | 3W, 3P | ARC40133F | AP40133F | 2.500 to 3.000 |
| | | | ARC40133G | AP40133G | 3.000 to 3.500 |
| | | 4W, 4P | ARC40144F | AP40144F | 2.500 to 3.000 |
| | | ARC40144G | AP40144G | 3.000 to 3.500 | |
| | Style 2 (Shell and Extra Pole) | 2W, 3P | ARC40123F | AP40123F | 2.500 to 3.000 |
| | | | ARC40123G | AP40123G | 3.000 to 3.500 |
| 3W, 4P | | ARC40134F | AP40134F | 2.500 to 3.000 | |
| | | ARC40134G | AP40134G | 3.000 to 3.500 | |

Solder wire terminals standard on all models.
For Reverse Service add suffix **-RS** to Catalog Number.
For Special Polarization add suffix **-P4** to Catalog Number.

Pin and Sleeve Design



Energized contacts deeply recessed to reduce danger of accidental touching, minimize possibility of exposed arcs. Insulator quenches arcing, and is resistant to abnormal heat and to fire.

Plug mechanical cable clamps provide strain relief at conductor connections, allow easy cable replacement.

Ⓢ Pressure terminal kits available for .84 wire recess size only to convert solder terminal to pressure terminal. See Replacement Parts page.

Powerlite™ 200 and 400 Amp Pin and Sleeve Connectors and Plugs

Mounting Boxes and Replacement Interiors. 600 Vac, 250 Vdc, 50-400 Hz.

NEC/CEC — 200 Amp:
Listed for Ordinary (Unclassified) Locations
NEMA 3, 3R, 4, 4X

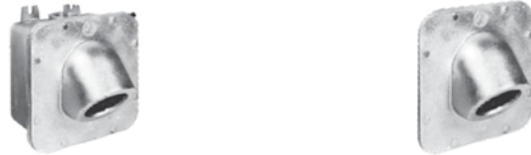
NEC/CEC — 400 Amp:
Listed for Ordinary (Unclassified) Locations
NEMA 4 — Optional

200 Amp Mounting Boxes and Angle Adapter



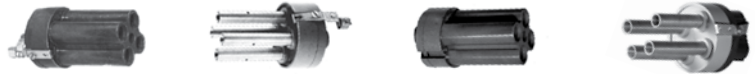
| Hub Size (Inches) | AJB | AJA | AJA200 (Angle Adapter Only) |
|-------------------|--------|--------|-----------------------------|
| 1-1/2 NPT | — | AJA520 | AJA200 |
| 2 NPT | AJB620 | AJA620 | AJA200 |
| 2-1/2 NPT | — | AJA720 | AJA200 |
| 2-3/8 (Slip Hole) | AJB238 | — | — |

400 Amp Mounting Box and Angle Adapter



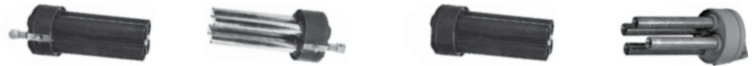
| Hub Size (Inches) | AJAC ① | AJA400 (Angle Adapter Only) |
|-------------------|---------|-----------------------------|
| 4 | AJAC400 | AJA400 |

200 Amp Interiors ②



| Grounding Style | Wire/Pole | Receptacle | Plug | Receptacle | Plug |
|--------------------------------|-----------|------------|----------|------------|----------|
| Style 1 (Shell Only) | 3W, 3P | ARI20033 | API20033 | — | — |
| | 4W, 4P | ARI20044 | API20044 | — | — |
| Style 2 (Shell and Extra Pole) | 2W, 3P | — | — | ARI20023 | API20023 |
| | 3W, 4P | — | — | ARI20034 | API20034 |

400 Amp Interiors ②



| Wire Recess Dia. (Inches) | Grounding Style | Wire/Pole | Receptacle | Plug | Receptacle | Plug |
|---------------------------|--------------------------------|-----------|------------|----------|------------|----------|
| .84 | Style 1 (Shell Only) | 3W, 3P | ARI40033 | API40033 | — | — |
| | | 4W, 4P | ARI40044 | API40044 | — | — |
| | Style 2 (Shell and Extra Pole) | 2W, 3P | — | — | ARI40023 | API40023 |
| | | 3W, 4P | — | — | ARI40034 | API40034 |
| 1.25 | Style 1 (Shell Only) | 3W, 3P | ARI40133 | API40133 | — | — |
| | | 4W, 4P | ARI40144 | API40144 | — | — |
| | Style 2 (Shell and Extra Pole) | 2W, 3P | — | — | ARI40123 | API40123 |
| | | 3W, 4P | — | — | ARI40134 | API40134 |

② Has feed-thru 4" tapped openings. Supplied with one 4" to 3" reducer and one 4" close-up plug.

③ Pins and sleeves are not sold separately.

Powerlite™ 200 and 400 Amp Replacement Parts





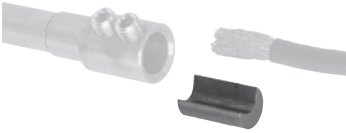

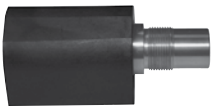
600 Vac, 250 Vdc, 50-400 Hz.

NEC/CEC – 200 Amp:
Listed for Ordinary (Unclassified) Locations
NEMA 3, 3R, 4, 4X

NEC/CEC – 400 Amp:
Listed for Ordinary (Unclassified) Locations
NEMA 4 – Optional

PLUGS AND RECEPTACLES: NEC/CEC ORDINARY LOCATION

APPLETON™

| | Description | Catalog Number |
|---|---|-------------------|
| Receptacle Covers | | |
|  | Spring Cover – Includes Gasket | |
| | 200 Amp – 2- and 3-Pole | PTLC200A |
| | 200 Amp – 4-Pole | PTLC200B |
|  | Clamping Cover – Includes Gasket and Chain | |
| | 200 Amp – 2- and 3-Pole | PTBC200A |
| | 200 Amp – 4-Pole | PTBC200B |
| | 400 Amp – 2- and 3-Pole | PTBC400A |
| | 400 Amp – 4-Pole | PTBC400B |
| Bushing Bags for Plugs and Cable Connectors | | |
|  | 200 Amp - Suffix CD | PTGBCD |
| | 200 Amp - Suffix E | PTGB200E |
| | 400 Amp - Suffix E | PTGB400E |
| | 400 Amp - Suffix F | PTGB400F |
| | 400 Amp - Suffix G | PTGB400G |
| Receptacle Lockout Device | | |
|  | Lockout, 200 Amp 3- and 4-Pole Models | PTLOCK2004 |
| | Lockout, 400 Amp 4-Pole Models | PTLOCK4004 |
| Optional Accessory for Wire Size #1 to #4 | | |
| <i>Check National Electrical Code for proper wire size and application.</i> | | |
|  | 200 Amp, 3-Pole Wire Adapter Kit | PTK200WA3 |
| | 200 Amp, 4-Pole Wire Adapter Kit | PTK200WA4 |
| 400 Amp Pressure Terminal Kits | | |
|  | Use with 400-500 MCM Wire 0.84" I.D. Wire Recess | |
| | 3 Adapters | PTK84-3P |
| | 4 Adapters | PTK84-4P |
|  | Use With 750 MCM General Wire or 500-777 MCM Flexible Wire 1.18" I.D. Wire Recess | |
| | 3 Adapters | PTK750-3P |
| | 4 Adapters | PTK750-4P |

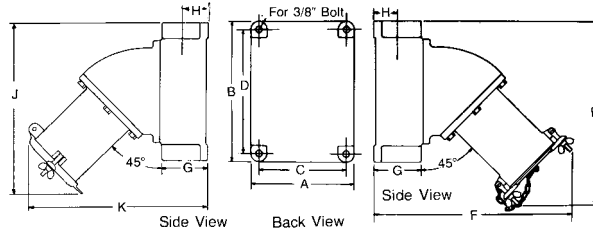
Powerlite™ 200 Amp Mounted Receptacle

600 Vac, 250 Vdc, 50-400 Hz.

NEC/CEC:
Listed for Ordinary (Unclassified) Locations
NEMA 3, 3R, 4, 4X

Dimensions in Millimeters (Inches)

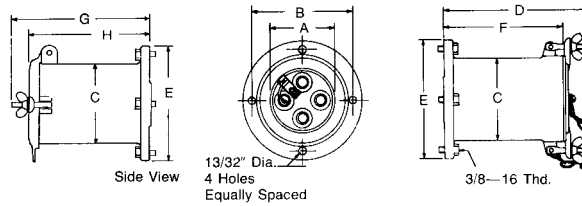
Receptacle Mounted on AJA and AJAC Boxes



Dimensions in Millimeters (Inches)

| A | B | C | D | E | F | G | H | J | K |
|--------------|---------------|--------------|--------------|---------------|---------------|-------------|-------------|---------------|---------------|
| 203.2 (8.00) | 273.0 (10.75) | 171.4 (6.75) | 241.3 (9.50) | 355.6 (14.00) | 387.3 (15.25) | 95.2 (3.75) | 47.7 (1.88) | 342.9 (13.50) | 361.9 (14.25) |

Receptacle



Dimensions in Millimeters (Inches)

| No. Poles | A | B | C | D | E | F | G | H |
|-----------|-------------|--------------|--------------|--------------|--------------|--------------|--------------|--------------|
| 3 | 82.5 (3.25) | 143.0 (5.63) | 10.46 (4.19) | 203.2 (8.00) | 168.4 (6.63) | 166.6 (6.56) | 170.1 (6.70) | 179.0 (7.05) |
| 4 | 92.2 (3.63) | 143.0 (5.63) | 115.8 (4.56) | 203.2 (8.00) | 168.4 (6.63) | 166.6 (6.56) | 170.1 (6.70) | 179.0 (7.05) |

PLUGS AND RECEPTACLES: NEC/CEC ORDINARY LOCATION

APPLETON™

Powertite™ 200 Amp Connector, Plug and Adapter

600 Vac, 250 Vdc, 50-400 Hz.

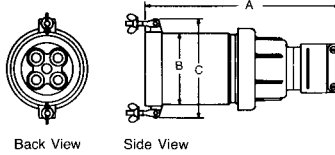
NEC/CEC:
Listed for Ordinary (Unclassified) Locations
NEMA 3, 3R, 4, 4X

PLUGS AND RECEPTACLES: NEC/CEC ORDINARY LOCATION

APPLETON™

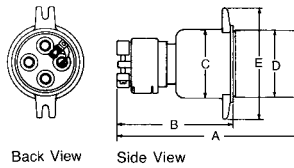
Dimensions in Millimeters (Inches)

Connector Body



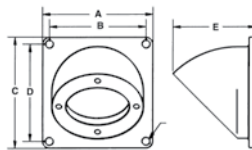
| No. Poles | Dimensions in Millimeters (Inches) | | |
|-----------|------------------------------------|--------------|--------------|
| | A | B | C |
| 3 | 330.2 (13.00) | 106.4 (4.19) | 136.6 (5.38) |
| 4 | 330.2 (13.00) | 115.8 (4.56) | 146.0 (5.75) |

Plug



| No. Poles | Dimensions in Millimeters (Inches) | | | | |
|-----------|------------------------------------|--------------|--------------|---------------|--------------|
| | A | B | C | D | E |
| 3 | 303.2 (11.94) | 198.3 (7.81) | 96.7 (3.81) | 95.2 (3.75) | 163.5 (6.44) |
| 4 | 303.2 (11.94) | 198.3 (7.81) | 106.4 (4.19) | 104.95 (4.13) | 172.9 (6.81) |

AJA200 Angle Adapter



| Dimensions in Millimeters (Inches) | | | | |
|------------------------------------|-------------|-------------|-------------|-------------|
| A | B | C | D | E |
| 203.2 (8.0) | 177.8 (7.0) | 203.2 (8.0) | 177.8 (7.0) | 152.4 (6.0) |

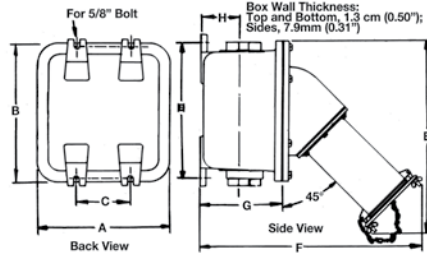
Powertite™ 400 Amp Mounted Receptacle and Receptacle

600 Vac, 250 Vdc, 50-400 Hz.

NEC/CEC:
Listed for Ordinary (Unclassified) Locations
NEMA 4 – Optional

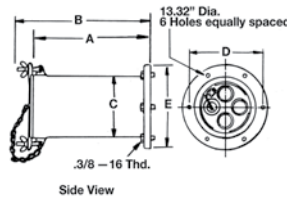
Dimensions in Millimeters (Inches)

Receptacle Mounted on AJAC Box



| Hub Size ① | Dimensions in Millimeters (Inches) | | | | | | | |
|------------|------------------------------------|---------------|--------------|---------------|---------------|---------------|--------------|-------------|
| | A | B | C | D | E | F | G | H |
| 4.00/10.16 | 403.3 (15.88) | 403.3 (15.88) | 165.1 (6.50) | 384.3 (15.13) | 558.8 (22.00) | 615.9 (24.25) | 215.9 (8.50) | 98.5 (3.88) |

Receptacle



| No. Poles | Dimensions in Millimeters (Inches) | | | | | |
|-----------|------------------------------------|---------------|--------------|--------------|--------------|--------------|
| | A | B | C | D | E | F |
| 3 | 285.7 (11.25) | 311.1 (12.25) | 130.3 (5.13) | 171.4 (6.75) | 196.8 (7.75) | 106.4 (4.19) |
| 4 | 285.7 (11.25) | 311.1 (12.25) | 143.0 (5.63) | 171.4 (6.75) | 196.8 (7.75) | 119.1 (4.69) |

① AJAC box has feed-thru 101.6 mm (4") openings. Supplied with one 101.6 mm (4") to 76.2 mm (3") reducer, and one 101.6 mm (4") close-up plug.

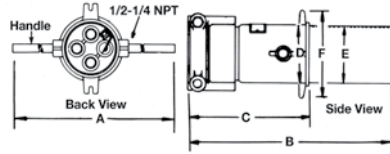
Powertite™ 400 Amp Connector and Plug

600 Vac, 250 Vdc, 50-400 Hz.

NEC/CEC:
Listed for Ordinary (Unclassified) Locations
NEMA 4 – Optional

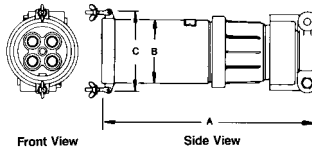
Dimensions in Millimeters (Inches)

Plug



| No. Poles | Dimensions in Millimeters (Inches) | | | | | |
|-----------|------------------------------------|---------------|---------------|--------------|--------------|--------------|
| | A | B | C | D | E | F |
| 3 | 381.0 (15.00) | 482.6 (19.00) | 285.7 (11.25) | 119.3 (4.70) | 118.3 (4.66) | 190.5 (7.50) |
| 4 | 393.7 (15.50) | 482.6 (19.00) | 285.7 (11.25) | 131.8 (5.19) | 131.0 (5.16) | 203.2 (8.00) |

Connector Body



| No. Poles | Dimensions in Millimeters (Inches) | | |
|-----------|------------------------------------|--------------|--------------|
| | A | B | C |
| 3 | 482.6 (19.00) | 130.3 (5.13) | 184.1 (7.25) |
| 4 | 482.6 (19.00) | 143.0 (5.63) | 196.8 (7.75) |

PLUGS AND RECEPTACLES: NEC/CEC ORDINARY LOCATION

APPLETON™