

4Q Straight Liquidtight Connectors

Hot-Dip/Mechanically Galvanized with Insulated Throat

NEC/CEC — Suitable for use in the following

Hazardous Locations:

Class I, Division 2 per NEC 501.4(B)

Class I, Zone 2 per NEC 505.15(C)(2)

Class II, Division 1 per NEC 502.4(A)(1)(e)

Class II, Division 2 per NEC 502.4(B)(2)

NEC/CEC — Suitable for use in the following

Hazardous Locations:

Class III, Division 1 per NEC 503.3(A)(2)

Class III, Division 2 per NEC 503.3(B)

Intrinsically Safe per NEC 504.20

Applications

- Secures, grounds and seals liquidtight flexible metal conduit and terminates bonding conductor run externally alongside liquidtight conduit to threaded rigid conduit and IMC.

Features

- Positive grounding type.
- Liquidtight flexible metal conduit to threaded rigid conduit and IMC.
- Female hub — NPT.
- Grounding lug is cast as an integral part of malleable iron gland nut. Provides high ground fault withstand capability.
- Compact, slim diameter with small turning radius.
- Furnished with locknut and KO sealing ring.
- Liquidtight/Raintight/Oiltight/Concretetight.
- UL Listed NEMA Type 4 when installed into a NPT threaded entry or UL Listed conduit hub (sizes 1-1/4" and larger require thread sealant).
- Long ferrule prevents pull-out and tight bend conduit "pop-out".
- Inspection windows in ferrule to ensure full engagement.

Standard Materials

- Malleable iron body and nut
- Steel ferrule

Standard Finishes

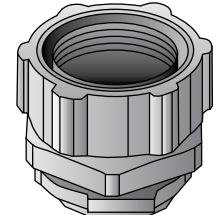
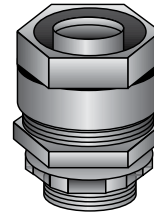
- Zinc electroplated

Options

- Hot dip or mechanical galvanize, add suffix **-G** to catalog number. Contact your local representative for pricing and availability.

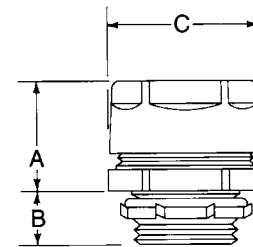
NEC/CEC Certifications and Compliances

- UL Listed: E-24264
- CSA Certified: 9795



Type 4Q-38TG — Type 4Q-200TG Type 4Q-250TG — Type 4Q-600TG

Illustrated Dimensions



Trade Size (Inches)	Dimensions in Millimeters (Inches)			Insulated Throat Catalog Number
	A	B	C	
3/8 (1/2 KO)	25.40 (1.00)	12.70 (0.50)	28.70 (1.13)	4Q-38TG
1/2	25.40 (1.00)	12.70 (0.50)	31.75 (1.25)	4Q-50TG
3/4	28.70 (1.13)	12.70 (0.50)	38.10 (1.50)	4Q-75TG
1	31.75 (1.25)	16.00 (0.63)	44.45 (1.75)	4Q-100TG
1-1/4	35.05 (1.38)	16.00 (0.63)	63.50 (2.50)	4Q-125TG
1-1/2	35.05 (1.38)	16.00 (0.63)	69.85 (2.75)	4Q-150TG
2	38.10 (1.50)	16.00 (0.63)	82.55 (3.25)	4Q-200TG
2-1/2	50.80 (2.00)	25.40 (1.00)	104.90 (4.13)	4Q-250TG
3	50.80 (2.00)	28.70 (1.13)	123.95 (4.88)	4Q-300TG
3-1/2	57.15 (2.25)	31.75 (1.25)	123.95 (4.88)	4Q-350TG
4	57.15 (2.25)	31.75 (1.25)	155.70 (6.13)	4Q-400TG
5	60.45 (2.38)	28.70 (1.13)	187.45 (7.38)	4Q-500TG ①
6	63.50 (2.50)	35.05 (1.38)	219.20 (8.63)	4Q-600TG ①②

① UL Listing not applicable.

② CSA Certification not applicable.

4Q 45° and 90° Liquidtight Connectors

Hot-Dip/Mechanically Galvanized with Insulated Throat

NEC/CEC — Suitable for use in the following

Hazardous Locations:

- Class I, Division 2 per NEC 501.4(B)
- Class I, Zone 2 per NEC 505.15(C)(2)
- Class II, Division 1 per NEC 502.4(A)(1)(e)
- Class II, Division 2 per NEC 502.4(B)(2)

NEC/CEC — Suitable for use in the following

Hazardous Locations:

- Class III, Division 1 per NEC 503.3(A)(2)
- Class III, Division 2 per NEC 503.3(B)
- Intrinsically Safe per NEC 504.20

Applications

- To secure, ground and seal Liquidtight Flexible Metal conduit, Type LFMC, to boxes and enclosures.

Features

- Tapered threaded male hub NPT.
- Compact, slim diameter with small turning radius.
- Furnished with locknut and KO sealing ring.
- Liquidtight/Raintight/Oiltight/Concretetight
- UL Listed NEMA Type 4 when installed into a NPT threaded entry or UL Listed conduit hub (sizes 1 1/4" and larger require thread sealant).
- Suitable for grounding through 1-1/4" trade size per NEC Section 250.118(7)
- For trade sizes 1-1/2" and larger, an internal or external equipment bonding conductor is required.
- Suitable for use in the following Hazardous Locations:
- Bonding wedge locknuts are recommended in hazardous locations. See 101 Series.
- Suitable for wet locations.
- Long ferrule prevents pullout and tight bend conduit "pop-out".
- Inspection windows in ferrule to ensure full engagement.
- Provided with insulated throat.

Standard Materials

- Malleable iron
- Steel ferrule

Standard Finishes

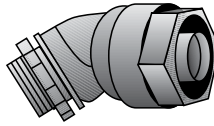
- Malleable iron - galvanized
- Steel ferrule - zinc electroplated

Options

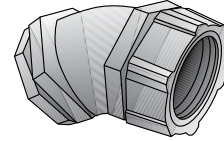
- Available hot dip/mechanically galvanized.

NEC/CEC Certifications and Compliances

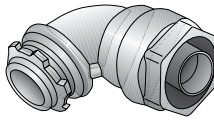
- UL Standard: ANSI/UL 514B
- UL Listed: 11853
- CSA Standard: C22.2 No. 18
- CSA Certified: 9795
- Fed Spec: W-F-406E
- NEMA Standard: FB-1



Type 4Q-438TG — Type 4Q-4200TG



Type 4Q-4250TG — Type 4Q-4500TG



Type 4Q-938TG — Type 4Q-9200TG



Type 4Q-9250TG — Type 4Q-9500TG

4Q 45° and 90° Liquidtight Connectors

Hot-Dip/Mechanically Galvanized with Insulated Throat

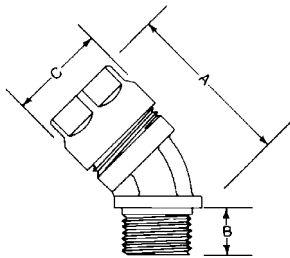
Suitable for use in the following Hazardous Locations:

- Class I, Division 2 per NEC 501.4(B)
- Class I, Zone 2 per NEC 505.15(C)(2)
- Class II, Division 1 per NEC 502.4(A)(1)(e)
- Class II, Division 2 per NEC 502.4(B)(2)

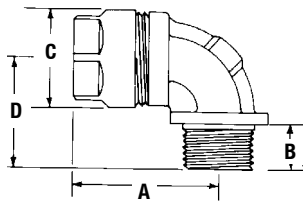
Suitable for use in the following Hazardous Locations:

- Class III, Division 1 per NEC 503.3(A)(2)
- Class III, Division 2 per NEC 503.3(B)
- Intrinsically Safe per NEC 504.20

Trade Size (Inches)	Dimensions in Millimeters (Inches)			Catalog Number	Insulated Throat Catalog Number
	A	B	C Dia.		
3/8 (1/2 KO)	47.75 (1.88)	14.22 (0.56)	28.70 (1.13)	4Q-438	4Q-438TG
1/2	47.75 (1.88)	14.22 (0.56)	31.75 (1.25)	4Q-450	4Q-450TG
3/4	57.15 (2.25)	14.22 (0.56)	38.10 (1.50)	4Q-475	4Q-475TG
1	60.45 (2.38)	12.70 (0.50)	44.45 (1.75)	4Q-4100	4Q-4100TG
1-1/4	82.55 (3.25)	16.00 (0.63)	57.15 (2.25)	4Q-4125	4Q-4125TG
1-1/2	85.85 (3.38)	16.00 (0.63)	66.80 (2.63)	4Q-4150	4Q-4150TG
2	101.60 (4.00)	16.00 (0.63)	76.20 (3.00)	4Q-4200	4Q-4200TG
2-1/2	146.05 (5.75)	25.40 (1.00)	104.90 (4.13)	4Q-4250	4Q-4250TG
3	165.10 (6.50)	28.70 (1.13)	123.95 (4.88)	4Q-4300	4Q-4300TG
4	190.50 (7.50)	31.75 (1.25)	155.70 (6.13)	4Q-4400	4Q-4400TG
5	203.20 (8.00)	31.75 (1.25)	187.45 (7.38)	4Q-4500 ①	4Q-4500TG ①



Trade Size (Inches)	Dimensions in Millimeters (Inches)				Catalog Number	Insulated Throat Catalog Number
	A	B	C	D		
3/8 (1/2 KO)	39.62 (1.56)	14.22 (0.56)	28.70 (1.13)	35.05 (1.38)	4Q-938	4Q-938TG
1/2	39.62 (1.56)	14.22 (0.56)	31.75 (1.25)	35.05 (1.38)	4Q-950	4Q-950TG
3/4	45.97 (1.81)	12.70 (0.50)	38.10 (1.50)	38.10 (1.50)	4Q-975	4Q-975TG
1	50.80 (2.00)	12.70 (0.50)	44.45 (1.75)	41.40 (1.63)	4Q-9100	4Q-9100TG
1-1/4	69.85 (2.75)	16.00 (0.63)	57.15 (2.25)	54.10 (2.13)	4Q-9125	4Q-9125TG
1-1/2	73.15 (2.88)	16.00 (0.63)	66.80 (2.63)	57.15 (2.25)	4Q-9150	4Q-9150TG
2	88.90 (3.50)	19.05 (0.75)	76.20 (3.00)	73.15 (2.88)	4Q-9200	4Q-9200TG
2-1/2	190.50 (7.50)	25.40 (1.00)	104.90 (4.13)	181.10 (7.13)	4Q-9250	4Q-9250TG
3	225.55 (8.88)	28.70 (1.13)	123.95 (4.88)	215.90 (8.50)	4Q-9300	4Q-9300TG
4	289.05 (11.38)	28.70 (1.13)	155.70 (6.13)	279.40 (11.00)	4Q-9400	4Q-9400TG
5	355.60 (14.00)	31.75 (1.25)	187.45 (7.38)	355.60 (14.00)	4Q-9500 ①	4Q-9500TG ①



① UL Listing not applicable.