

## Low Profile Sconce Box



Non-metallic, installs in existing 1/2" or 5/8" walls with 4" hole saw.

### FEATURES AND BENEFITS

- Time-saving solution to retrofit installations that have shallow wall cavities—or obstructions running behind the wallboard
- Includes NM cable connector and mounting wings for 1/2" or 5/8" drywall and installation screws for mounting wings
- 4" diameter box accommodates most sconce light canopies, completely hiding the box

CATALOG NUMBER	UPC/DCI/NAED MFG #018997	DESCRIPTION/ CU. IN. / DIA.	UNIT PKG	STD PKG	DIM A	DIM B	DIM C	DIM D
FSC405R	04094	Non-metallic / 5.0 Cu. In. / 4" Dia.	1	10	4.760	3.760	3.500	.500

Refer to chart on page R-22 for load ratings and number of single conductors.

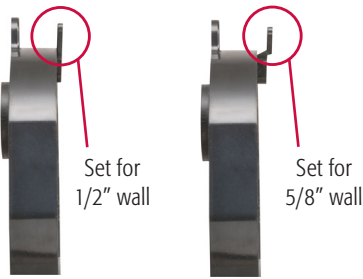
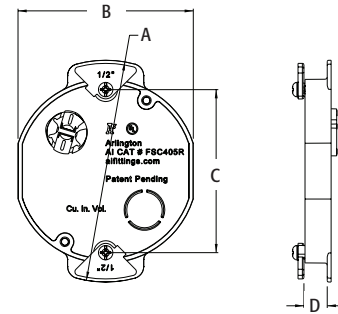
**PATENT PENDING.**



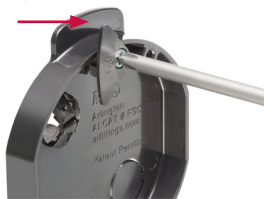
E170558

### INCLUDES...

5.0 cu. in. Low Profile Sconce Box, NM cable connector, (2) mounting wings for 1/2" drywall, (2) mounting wings for 5/8" drywall, and (2) installation screws for 'wings'.



Easy-to-install mounting wings

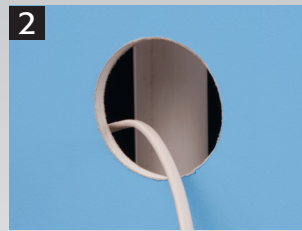


### INSTALLATION INSTRUCTIONS

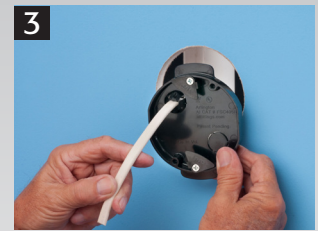
FOR EXISTING WALLS:



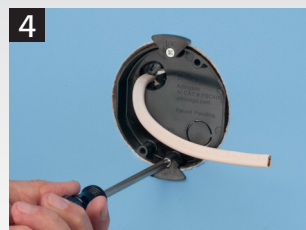
**1** Determine sconce light location. Cut opening with 4" hole saw.



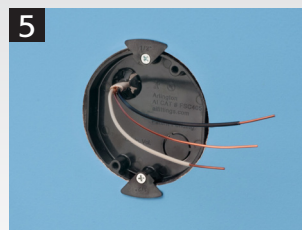
**2** Pipe obstruction behind wall prevents the installation of a typical sconce box. Install mounting wing for 1/2 or 5/8" drywall. Pull cable...



**3** ...Inserting it into installed NM94 connector. Tilt box to insert it into the stud cavity.



**4** Pull box towards you, into the 4" opening. Flip the retaining wings outward. Tighten screws to secure box to wallboard.



**5** Finished box installation. Ready to install sconce light.