



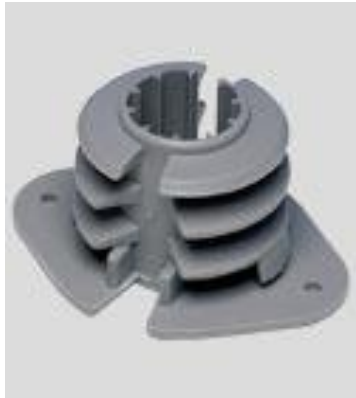
4700 W. 160th St.
Cleveland, OH 44135
PH:800-321-9532
FX:800-321-9535
www.oatey.com

TECHNICAL SPECIFICATION

INSULATING PIPE CLAMPS



TECHNICAL SPECIFICATION: Oatey Insulating Pipe Clamps provide fast and easy installation for all types of copper tube size piping. Insulating Pipe Clamps eliminate contact between the pipe and framing surface and insulate against sound. Insulating Pipe Clamps can be used with hydronic heating systems.



APPROVALS AND LISTINGS



IAPMO Listed

PHYSICAL/CHEMICAL PROPERTIES

Material Low Density Polyethylene
Color Gray
Impact Resistant to 0° F
Maximum Temperature 180° F

DIRECTIONS FOR USE

Open pipe clamp and snap over pipe or tube. Slide into 1-3/8" pre-cut hole and secure with barbed nail or screw. Check with local codes to ensure proper spacing requirements for piping support.

PRECAUTIONS

Read cautions and directions on packaging carefully before using this product. KEEP OUT OF REACH OF CHILDREN.

COMMON APPLICATIONS

Insulating Pipe Clamps provide fast and easy installation and support for all types of copper tube sized piping.

PRODUCT NUMBER	DESCRIPTION	PACK	CARTON WEIGHT
33953	1/2" Insulating Pipe Clamp (6 per bag)	6 bags	2 lbs.
339532	1/2" Insulating Pipe Clamp (6 per bag)	6 bags	2 lbs.
33950	1/2" Insulating Pipe Clamp (50 per bag)	250	4 lbs.
33954	3/4" Insulating Pipe Clamp (6 per bag)	6 bags	4 lbs.
339542	3/4" Insulating Pipe Clamp (6 per bag)	6 bags	4 lbs.
33951	3/4" Insulating Pipe Clamp (50 per bag)	250	4 lbs.
33875	1" Insulating Pipe Clamp (6 per bag)	6 bags	6 lbs.
33952	1" Insulating Pipe Clamp (25 per bag)	250	5 lbs.