

## Vertical Outdoor Condenser Fan Motors Shaft-Up/Down

### Ball Bearing

GE up/down outdoor condenser fan motors are designed for either vertical shaft-up or shaft-down applications. Shell and end shields are enclosed for weather protection. A weep hole is provided in each end shield to allow condensate to drain. A plastic plug is provided to seal the weep hole in the end shield exposed to the weather. All of these motors are suitable for air conditioning or heat pump applications. All feature reversible rotation, 208-230 volts, six inch shaft length and extended thru bolts extending from both ends.

#### Features:

- Thru bolt or band mounting
- All angle mounting
- Water slinger on shaft
- Serrated end cap on shaft end only
- For air conditioning or heat pumps
- Full six inch shaft length with two full flats at 90°
- Reversible rotation
- For accessories see pages M-50 – M-54
- Rheem mtg. holes (mtg. hardware included)

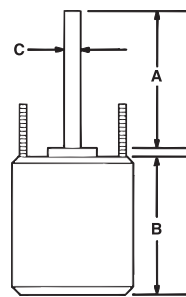
#### Specifications:

- 60 Hertz
- Single phase
- Overload protected
- Fan duty, continuous, air over
- 48 inch leads
- Totally enclosed, non-ventilated
- Class B insulation

#### Reversible Rotation

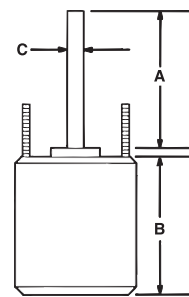
MARS NO.	GE NO. 5KCP39	HP	VOLTS	AMPS	RPM (1)	CAP REQ.	DIMENSIONS		
							A	B	C
<b>825 RPM - Single Speed - Standard Efficiency - 8 Pole</b>									
03201(3)	EGL248S	1/10	208-230	0.80	825	5/370	6.0	4.30	1/2
03202*	DFBA81S	1/8	208-230	0.85	825	5/370	6.0	4.30	1/2
03203*	HFBA79S	1/6	208-230	0.90	825	5/370	6.0	4.30	1/2
03204*	JFBA83	1/4	208-230	1.3	825	7.5/370	6.0	5.03	1/2
03205*	NFBA82S	1/3	208-230	1.8	825	10/370	6.0	5.80	1/2
<b>1075 RPM - Single Speed - Standard Efficiency - 6 Pole</b>									
03726 *	HGU722S	1/6	208-230	1.0	1075	5/370	6.5	3.98	1/2
03732(2) *	GGU714S	1/4	208-230	1.7	1075	5/370	6.0	4.23	1/2
03733(2) *	LGU715S	1/3	208-230	2.6	1075	7.5/370	6.0	4.48	1/2
03734(2) *	RGU718S	1/2	208-230	3.0	1075	10/370	6.0	5.23	1/2
03735(2) *	SGU717S	3/4	208-230	4.1	1075	10/370	6.0	5.98	1/2

(1) Low speed approximately 300 RPM less than high speed depending on fan load  
 (2) Both end shields flat, no serrated end cap (3) 26" leads



\* Heat Shield

## Vertical Outdoor Condenser Fan Motors Shaft-Up/Down



\* Heat Shield

GE up/down outdoor condenser fan motors are designed for either vertical shaft-up or shaft-down applications. Shell and end shields are enclosed for weather protection. A weep hole is provided in each end shield to allow condensate to drain. A plastic plug is provided to seal the weep hole in the end shield exposed to the weather. All of these motors are suitable for air conditioning or heat pump applications. All feature reversible rotation, 208-230 volts, six inch shaft length and extended thru bolts extending from both ends.

#### Specifications:

- 60 Hertz
- Single phase
- Overload protected
- Fan duty, continuous, air over
- 26 inch leads
- Totally enclosed, non-ventilated
- Class B insulation

#### Features:

- Up/down design
- Thru bolt or band mounting
- All angle sleeve bearings
- Water slinger on shaft
- Serrated end cap on shaft end only
- For air conditioning or heat pumps
- Full six inch shaft length with two full flats at 90°
- Reversible rotation
- 48 inch leads
- For accessories see pages M-50 – M-54

#### Reversible Rotation

MARS NO.	GE NO. 5KCP39	HP	VOLTS	AMPS	RPM	CAP REQ.	DIMENSIONS		
							A	B	C
<b>825 RPM - Single Speed - 8 Pole</b>									
03404*	JFAD07S	1/4	208-230	1.3	825	7.5/370	6.0	5.23	1/2
03405*	NFAD09S	1/3	208-230	1.8	825	10/370	6.0	5.73	1/2
<b>1075 RPM - Single Speed - Standard Efficiency - 6 Pole</b>									
03727	DGS375S	1/6	208-230	1.0	1075	5/370	6.0	4.71	1/2
03727HS*	DGY797S	1/6	208-230	1.0	1075	5/370	6.0	4.71	1/2
03728	FGM599S	1/4	208-230	1.8	1075	5/370	6.0	4.25	1/2
03728HS*	GGY769S	1/4	208-230	1.7	1075	5/370	6.0	4.25	1/2
03729	LGS407S	1/3	208-230	2.3	1075	7.5/370	6.0	5.70	1/2
03729HS*	LGY801S	1/3	208-230	2.6	1075	7.5/370	6.0	5.70	1/2
03730	PGS618S	1/2	208-230	3.5	1075	10/370	6.0	6.50	1/2
03730HS*	RGY799S	1/2	208-230	3.0	1075	10/370	6.0	6.50	1/2
03731	SGT039S	3/4	208-230	4.7	1075	10/370	6.0	5.75	1/2
03731HS*	SGY805S	3/4	208-230	4.1	1075	10/370	6.0	5.75	1/2