

## Shaft-Up Outdoor Condenser Fan Motors



GE outdoor condenser fan motors for vertical shaft-up applications are also suitable for horizontal mounting. GE vertical shaft-up outdoor condenser fan motors are designed for 60°C ambient temperature. Add MARS No. 08105 resilient rings to base mount.

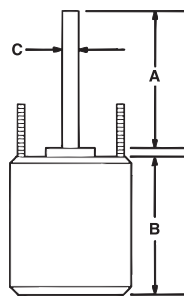
GE commercial 460 volt outdoor condenser fan motors are designed for 70°C ambient so lower operating temperatures = improved life and reliability.

### Features:

- Reversible rotation
- Thru bolt or band mounting
- Water slinger on shaft
- Serrated end caps on vertical shaft-up models
- Full six inch shaft length
- For accessories see pages M-50 – M-54

### Specifications:

- Class B insulation
- Single phase, 60/50 Hertz
- Automatic thermal overload protected
- Fan duty, continuous, air over
- 26 inch leads shaft-up, 46 inch leads all angle
- Lead end endshield open construction



\* Heat Shield

### Reversible Rotation

MARS NO.	GE NO. 5KCP39	HP	VOLTS	AMPS	RPM (1)	CAP REQ.	DIMENSIONS		
							A	B	C

### 1075 RPM - Shaft-Up - Single Speed - Sleeve Bearings - Standard Efficiency - 6 Pole

03327(1)	DGP081S	1/6	208-230	0.9	1075	5/370	6.0	4.56	1/2
03328(1)(3)	EGP697S	1/4	208-230	1.8	1075	5/370	6.0	5.06	1/2
03329(1)(3)	HGP698S	1/3	208-230	2.4	1075	7.5/370	6.0	5.31	1/2
03330(1)(3)	MGK209S	1/2	208-230	3.6	1075	10/370	6.0	6.60	1/2
03331(1)(3)	PFM210S	3/4	208-230	5.1	1075	10/370	6.0	6.06	1/2

### 825 RPM - Shaft-Up - Single Speed - Ball Bearings - Energy Saver® - 8 Pole

03040	MGL789S	1/4	208-230	1.5	825	7.5/370	6.0	4.48	1/2
03026	NFBA66S	1/3	208-230	2.2	825	10/370	6.0	5.98	1/2

### 1075 RPM - 460V - Single Speed - All Angle Ball Bearing - 6 Pole

03736(1)(4)*	HGU722S	1/4	460	.7	1075	7.5/370	6.0	4.30	1/2
03737(1)(4)*	NGU724S	1/3	460	1.2	1075	7.5/370	6.0	5.30	1/2
03738(1)(4)*	RGU723S	1/2	460	1.7	1075	10/370	6.0	5.80	1/2
03739(1)(4)*	SGU725S	3/4	460	2.0	1075	15/370	6.0	6.50	1/2

(1) 60 Hertz only (2) Two full flats at 90° (3) Class A Insulation (4) Rheem shell mtg. holes

## 460 Volt Outdoor Condenser Fan Motors



### Ball Bearing

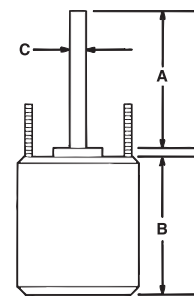
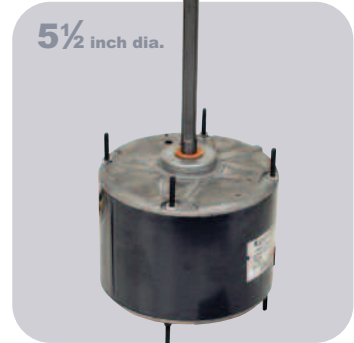
GE outdoor condenser fan motors are available for vertical shaft-up or vertical shaft-down applications. Vertical shaft-up models are also suitable for horizontal mounting. Add MARS No. 08105 resilient rings to base mount.

### Features:

- Reversible rotation
- Thru bolt or band mounting
- Water slinger on shaft
- Serrated end caps on vertical shaft-up models only
- Full 6 inch double flat shaft
- For accessories see pages M-50 – M-54

### Specifications:

- Class "B" insulation
- Single phase, 60/50 HZ
- Automatic thermal overload protected
- Fan duty, continuous air over
- 26 inch leads



### Cross Reference:

MARS NO.	A.O. SMITH	Emerson	GE Stock No.
03039	786	-	3035
03209	-	1881	3209
03743	-	1882	3740

### 825 RPM - Reversible Rotation - Standard Efficiency

MARS NO.	GE NO. 5KCP39	HP	VOLTS	AMPS	RPM (1)	CAP REQ.	DIMENSIONS		
							A	B	C

### Shaft-Up Or Horizontal Mount

03039	NFBA73S	1/3	460	1.10	825	10/370	6.0	6.38	1/2
-------	---------	-----	-----	------	-----	--------	-----	------	-----

### All Angle

03209	NFBA76S	1/3	460	1.10	825	7.5/370	6.0	5.71	1/2
03743	TFBA85S	1/2	460	1.80	825	10/370	6.0	6.71	1/2