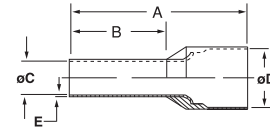


Ferrules

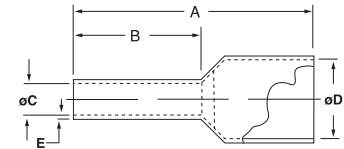
Insulated Twin Ferrules



| Cat. No. | Conductor Section | | Color | Dimensions in./mm | | | | E | Installation Tool | Pkg. Qty. |
|----------|-------------------|-----------------|--------------|-------------------|--------------|--------------|--------------|--------------|-------------------|-----------|
| | AWG | mm ² | | A | B | øC | øD | | | |
| F8000 | 2 x 20 | 2 x 0.50 | White | 0.591 / 15.0 | 0.315 / 8.0 | 0.059 / 1.5 | 0.177 / 4.5 | 0.010 / 0.25 | T3 | 500 |
| F8001 | 2 x 18 | 2 x 0.75 | Grey | 0.591 / 15.0 | 0.315 / 8.0 | 0.071 / 1.8 | 0.201 / 5.1 | | | |
| F8002 | 2 x 18 | 2 x 0.75 | | Red | 0.669 / 17.0 | 0.394 / 10.0 | 0.071 / 1.8 | 0.201 / 5.1 | | |
| F8003 | 2 x 17 | 2 x 1.00 | Black | | 0.591 / 15.0 | 0.315 / 8.0 | 0.081 / 2.05 | 0.201 / 5.1 | | |
| F8005 | 2 x 17 | 2 x 1.00 | | Blue | 0.669 / 17.0 | 0.394 / 10.0 | 0.081 / 2.05 | 0.201 / 5.1 | | |
| F8006 | 2 x 16 | 2 x 1.50 | Grey | | 0.630 / 16.0 | 0.315 / 8.0 | 0.091 / 2.3 | 0.252 / 6.4 | | |
| F8007 | 2 x 16 | 2 x 1.50 | | Yellow | 0.787 / 20.0 | 0.472 / 12.0 | 0.091 / 2.3 | 0.252 / 6.4 | | |
| F8008 | 2 x 14 | 2 x 2.50 | ERG4/6MM DIE | | 0.728 / 18.5 | 0.394 / 10.0 | 0.114 / 2.9 | 0.295 / 7.5 | | |
| F8009 | 2 x 14 | 2 x 2.50 | | ERG4/10MM DIE | 0.846 / 21.5 | 0.512 / 13.0 | 0.114 / 2.9 | 0.295 / 7.5 | | |
| F8010 | 2 x 12 | 2 x 4.00 | | | 0.906 / 23.0 | 0.472 / 12.0 | 0.150 / 3.8 | 0.339 / 8.6 | | |
| F8011 | 2 x 10 | 2 x 6.00 | | 0.984 / 25.0 | 0.551 / 14.0 | 0.193 / 4.9 | 0.378 / 9.6 | | | |

Ferrule dimensions conform to DIN 46228, Part 4

Insulated Ferrules (Old DIN and French Standards)



| Cat. No. | Style | Conductor | | Color | Dimensions in./mm | | | | E | Installation Tool | Pkg. Qty. |
|----------|---------|-----------|-----------------|----------|-------------------|-------------|-------------|-------------|--------------|-------------------|-----------|
| | | AWG | mm ² | | A | B | øC | øD | | | |
| F4000 | OLD DIN | 20 | 0.50 | Orange | 0.571 / 14.5 | 0.315 / 8.0 | 0.043 / 1.1 | 0.102 / 2.6 | 0.006 / 0.15 | T1, T3 & ERG4 | 500 |
| F4001 | | 18 | 0.75 | White | | | 0.051 / 1.3 | 0.110 / 2.8 | | | |
| F4002 | | 18-17 | 1.00 | Yellow | | | 0.059 / 1.5 | 0.118 / 3.0 | | | |
| F4003 | | 16 | 1.50 | Red | | | 0.071 / 1.8 | 0.134 / 3.4 | | | |
| F4020 | | 14 | 2.50 | Blue | | | 0.091 / 2.3 | 0.165 / 4.2 | | | |
| F4021 | FRENCH | 20 | 0.50 | White | 0.571 / 14.5 | 0.315 / 8.0 | 0.043 / 1.1 | 0.102 / 2.6 | 0.006 / 0.15 | T1, T3 & ERG4 | 500 |
| F4023 | | 18 | 0.75 | Lt. Blue | | | 0.051 / 1.3 | 0.110 / 2.8 | | | |
| F4024 | | 18-17 | 1.00 | Red | | | 0.059 / 1.5 | 0.118 / 3.0 | | | |
| F4027 | | 16 | 1.50 | Black | | | 0.071 / 1.8 | 0.134 / 3.4 | | | |
| F4028 | | 14 | 2.50 | Grey | | | 0.091 / 2.3 | 0.165 / 4.2 | | | |

Ferrule dimensions conform to DIN 46228, Part 4

Tooling for Sta-Kon® Insulated Ferrules

The crimping tools you need!

| Cat. No. | Description | Pkg. Qty. |
|----------|--|-----------|
| T1 | Sta-Kon® Crimp Tool for wire Ferrules #20-#14 AWG — insulated handle | 1 |
| T3 | Sta-Kon® Crimp Tool for wire Ferrules #26-#10 AWG — insulated handle | 1 |
| ERG4 | Comfort Crimp™ Sta-Kon® Crimp Tool with Shure-Stake® mechanism, for installing wire Ferrules #26-1/0 AWG. Four interchangeable die sets included. Insulated handle. Packaged in sturdy plastic carrying case | 1 |



T1



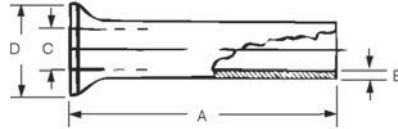
ERG4



T3

Ferrules

Non-Insulated Ferrules



| Cat. No. | Conductor Section | | Dimensions in./mm | | | | Installation Tooling | Pkg. Qty. |
|----------|-------------------|-----------------|-------------------|--------------|-------------|--------------|----------------------|-----------|
| | AWG | mm ² | A | C | D | E | | |
| F9000 | 24 | 0.25 | 0.196 / 5 | 0.030 / 0.75 | 0.067 / 1.7 | 0.006 / 0.15 | T1, T3, ERG4 | 1,000 |
| F9001 | 22 | 0.5 | 0.236 / 6 | 0.039 / 1.0 | 0.083 / 2.1 | | | |
| F9002 | 22 | 0.5 | 0.394 / 10 | 0.039 / 1.0 | 0.083 / 2.1 | | | |
| F9003 | 18 | 0.75 | 0.236 / 6 | 0.047 / 1.2 | 0.091 / 2.3 | | | |
| F9004 | 18 | 0.75 | 0.394 / 10 | 0.047 / 1.2 | 0.091 / 2.3 | | | |
| F9005 | 18 | 1 | 0.236 / 6 | 0.055 / 1.4 | 0.098 / 2.5 | | | |
| F9006 | 18 | 1 | 0.394 / 10 | 0.055 / 1.4 | 0.098 / 2.5 | | | |
| F9007 | 16 | 1.5 | 0.276 / 7 | 0.067 / 1.7 | 0.110 / 2.8 | | | |
| F9008 | 16 | 1.5 | 0.394 / 10 | 0.067 / 1.7 | 0.110 / 2.8 | | | |
| F9009 | 16 | 1.5 | 0.473 / 12 | 0.067 / 1.7 | 0.110 / 2.8 | | | |
| F9010 | 16 | 1.5 | 0.709 / 18 | 0.067 / 1.7 | 0.110 / 2.8 | | | |
| F9011 | 14 | 2.5 | 0.276 / 7 | 0.087 / 2.2 | 0.139 / 3.4 | | | |
| F9012 | 14 | 2.5 | 0.394 / 10 | 0.087 / 2.2 | 0.139 / 3.4 | | | |
| F9013 | 14 | 2.5 | 0.472 / 12 | 0.087 / 2.2 | 0.139 / 3.4 | | | |
| F9014 | 14 | 2.5 | 0.709 / 18 | 0.087 / 2.2 | 0.139 / 3.4 | | | |
| F9015 | 12 | 4 | 0.354 / 9 | 0.110 / 2.8 | 0.158 / 4 | 0.008 / 0.2 | T3, ERG4 | |
| F9016 | 12 | 4 | 0.472 / 12 | 0.110 / 2.8 | 0.158 / 4 | | | |
| F9017 | 12 | 4 | 0.591 / 15 | 0.110 / 2.8 | 0.158 / 4 | | | |
| F9018 | 12 | 4 | 0.709 / 18 | 0.110 / 2.8 | 0.158 / 4 | | | |
| F9019 | 10 | 6 | 0.472 / 12 | 0.138 / 3.5 | 0.185 / 4.7 | | | |
| F9020 | 10 | 6 | 0.591 / 15 | 0.138 / 3.5 | 0.185 / 4.7 | | | |
| F9021 | 10 | 6 | 0.709 / 18 | 0.138 / 3.5 | 0.185 / 4.7 | | | |
| F9022 | 8 | 10 | 0.472 / 12 | 0.177 / 4.5 | 0.228 / 5.8 | | ERG4 | 500 |
| F9023 | 8 | 10 | 0.591 / 15 | 0.177 / 4.5 | 0.228 / 5.8 | | | |
| F9024 | 8 | 10 | 0.709 / 18 | 0.177 / 4.5 | 0.228 / 5.8 | | | |
| F9025 | 6 | 16 | 0.472 / 12 | 0.228 / 5.8 | 0.295 / 7.5 | | | 250 |
| F9026 | 6 | 16 | 0.591 / 15 | 0.228 / 5.8 | 0.295 / 7.5 | | | |
| F9027 | 6 | 16 | 0.709 / 18 | 0.228 / 5.8 | 0.295 / 7.5 | | | |
| F9028 | 6 | 16 | 0.984 / 25 | 0.228 / 5.8 | 0.295 / 7.5 | | | |
| F9029 | 6 | 16 | 1.26 / 32 | 0.228 / 5.8 | 0.295 / 7.5 | | | |
| F9030 | 4 | 25 | 0.591 / 15 | 0.287 / 7.3 | 0.374 / 9.5 | 0.010 / 0.25 | | 100 |
| F9031 | 4 | 25 | 0.709 / 18 | 0.287 / 7.3 | 0.374 / 9.5 | | | |
| F9032 | 4 | 25 | 0.984 / 25 | 0.287 / 7.3 | 0.374 / 9.5 | | | |
| F9033 | 4 | 25 | 1.26 / 32 | 0.287 / 7.3 | 0.374 / 9.5 | | | |
| F9034 | 2 | 35 | 0.709 / 18 | 0.327 / 8.3 | 0.433 / 11 | | | |
| F9035 | 2 | 35 | 0.984 / 25 | 0.327 / 8.3 | 0.433 / 11 | | | |
| F9036 | 2 | 35 | 1.26 / 32 | 0.327 / 8.3 | 0.433 / 11 | | | |
| F9037 | 1/0 | 50 | 0.709 / 18 | 0.406 / 10.3 | 0.512 / 13 | 0.012 / 0.3 | TB5095, ERG4 | |
| F9038 | 1/0 | 50 | 0.984 / 25 | 0.406 / 10.3 | 0.512 / 13 | | | |
| F9039 | 1/0 | 50 | 1.18 / 30 | 0.406 / 10.3 | 0.512 / 13 | | | |