

SUBMITTAL SHEET

| | |
|-------------------|-------------|
| JOB NAME | ITEM TAG |
| JOB LOCATION | PART NUMBER |
| CONTRACTOR | DATE |
| ENGINEER APPROVAL | DATE |

HEAVY-DUTY NO-HUB COUPLINGS

Heavy-duty Shielded Hubless Couplings

Designed to connect cast iron no-hub soil pipe and no-hub fittings compliant with ASTM A888-11 and CISPI 301-09 in above-ground and underground residential, commercial and industrial applications requiring additional clamping and sealing forces. Proper bracing and backfilling practices must be followed.

Easily installed in new-construction or repair applications, eliminating the need for labor-intensive hub-and-spigot caulking.

Heavy-duty coupling design utilizes additional band clamps along the entire length of the coupling, larger shields and longer gaskets, as compared to standard couplings.

All heavy-pattern worm-gear band clamps are attached to the shield with a rivet through an elongated slot, which not only stabilizes the clamps during the tightening sequence, but also allows the clamps and shield to move independently, thus preventing uneven clamping force, binding and shield-crimping.

Durable 28-gauge stainless steel shields are corrugated, permitting even gasket compression and reduced buckling at the overlap.

Full-pattern Neoprene rubber gasket is tear-resistant and internally beaded, to ensure a positive seal and mechanical joint, with greater pull-out resistance.

Note: All 5/16" hex-head worm-gear screws must be incrementally tightened to 80 in-lb with a calibrated torque wrench to assure even compression and sealing.

Working Pressure, Non Shock (PSI)

Drain-Waste-Vent (DWV), gravity flow: < 10 psi

MATERIAL SPECIFICATION

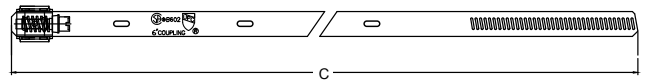
| PART | MATERIAL | SPECIFICATION |
|-------------------------------------|-----------------|---------------|
| 1 Shield | Stainless steel | AISI 310 |
| 2 Band clamp | Stainless steel | AISI 310 |
| 3 Worm gear screw -- 5/16" hex-head | Stainless steel | AISI 305 |
| 4 Worm gear cover | Stainless steel | AISI 310 |
| 5 Gasket | Neoprene rubber | ASTM C 564-11 |

DIMENSIONS - INCHES

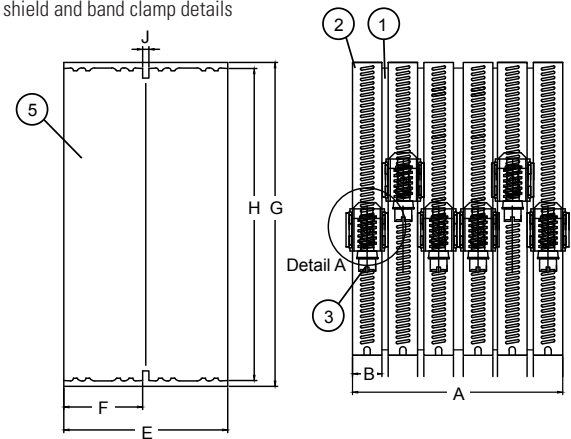
| Size | # of band clamps | A | B | C | D | E | F | G | H | I | J |
|--------|------------------|------|------|-------|------|------|------|-------|-------|-------|------|
| 1-1/2" | 4 | 3.00 | 0.55 | 8.66 | 0.79 | 3.00 | 1.44 | 2.03 | 1.87 | 1.56 | 0.12 |
| 2" | 4 | 3.00 | 0.55 | 10.43 | 0.79 | 3.00 | 1.44 | 2.53 | 2.30 | 2.01 | 0.12 |
| 3" | 4 | 3.00 | 0.55 | 13.86 | 0.79 | 3.00 | 1.44 | 3.51 | 3.29 | 2.95 | 0.12 |
| 4" | 4 | 3.00 | 0.55 | 16.54 | 0.79 | 3.00 | 1.04 | 4.54 | 4.33 | 4.02 | 0.12 |
| 5" | 6 | 3.94 | 0.55 | 19.92 | 0.79 | 3.94 | 1.91 | 5.53 | 5.30 | 4.90 | 0.12 |
| 6" | 6 | 3.94 | 0.55 | 23.03 | 0.79 | 3.94 | 1.91 | 6.47 | 6.27 | 5.95 | 0.12 |
| 8" | 6 | 4.02 | 0.55 | 29.72 | 0.79 | 4.02 | 1.95 | 8.39 | 8.15 | 7.74 | 0.12 |
| 10" | 6 | 4.06 | 0.55 | 36.22 | 0.79 | 4.06 | 1.97 | 10.85 | 10.54 | 10.03 | 0.12 |



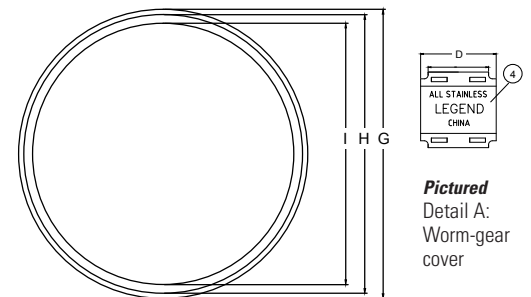
- Complies with the following ASTM specifications:
 - ASTM A 240 Standard Specification for Chromium and Chromium-Nickel Stainless Steel Plate, Sheet and Strip for Pressure Vessels and for General Applications
 - ASTM C 564-11 Standard Specification for Rubber Gaskets for Cast Iron Soil Pipe and Fittings
 - ASTM C 1540-2009 Standard Specification for Heavy Duty Shielded Couplings Joining Hubless Cast Iron Soil Pipe and Fittings
- Complies with the following CSA standards:
 - CSA B70-06 Cast Iron Soil Pipe, Fittings and Means of Joining
 - B602-10 Mechanical couplings for drain, waste and vent pipe and sewer pipe
- UPC/IAPMO Certified: File #5185
- Conforms to CISPI Standard 310-11
- Manufactured in an ISO accredited facility



Pictured
Heavy-duty no-hub shield and band clamp details



Pictured
Heavy-duty no-hub gasket, cut-away view



Pictured
Heavy-duty no-hub gasket, front view

Pictured
Detail A:
Worm-gear cover