

Corrosion Resistant Thermoplastic Valves and Unions

LIST PRICE SHEET

BALL VALVES

MIP BALL VALVES

BUTTERFLY VALVES

CHECK VALVES

STRAINERS

UNIONS

ACTUATED VALVES

SLO-CLOSE VALVES

INFO/TERMS/WARRANTY

PRICE GROUP	DESCRIPTION	DISCOUNT MULTIPLIER	EFFECTIVE - Mar. 26, 2015
VA	TUBVS, SUBVS, SUPER C COMPACTS, BALL CHECK, SWING CHECK, SPRING CHECK, LAB VALVES		VPS-25
VB	REPAIR PARTS, ACCESSORIES, Y-STRAINERS		updated 09/01/16
VC	BUTTERFLY VALVES		Supersedes VPS-24
VK	CONTRACTOR KITS (BFV & WAFER CHECK)		
VM	MIP COMPACT BALL VALVES		
VS	SLO-CLOSE BALL VALVES (SEE PRICE SHEET VPSC-6)		
VT	CPVC CTS BALL VALVES		

Prices for
new products
are in bold print.

For a list of changes, see page 2.



Distributed by:

LASCO®

Fittings, Inc.

CUSTOMER SERVICE: 414 Morgan Street, Brownsville, TN 38012
Toll-free Phone (800) 776 2756 or (731) 772 3180 • Fax (731) 772 0835
www.lascofittings.com

**Visit Us
Online!**

(see inside front cover)

Visit Us Online!

Design & Installation Information | Installation/Operation/Maintenance Sheets
Sample Engineering Specs | Industry Standards | Chemical Resistance Information



Overview of changes in this price sheet – VPS-25 (PDF Update 09/01/16)

1. All Industrial Series PVC and CPVC TUBV (page 4) and Super C Valves (page 7) are now certified to NSF/ANSI 61 and 372.
2. **NEW** Industrial TUBV PVC with Silicone o-rings for use with Sodium Permanganate in wastewater treatment systems. Sold in ½ - 1" sizes for dosing systems. Page 4
3. O-ring Kits for 131W SUBV, and 801 TUBV, page 7
4. **NEW** 411SV Butterfly Valves for Surge Tanks (Commercial Swimming Pool/Water Park) 8 – 12", page 13
5. BfV Contractor Kits are now available in 2-1/2" Size, page 15
6. **NEW** Wafer Check Valves – sold separately and in Contractor Kits with Flanges and bolt set, page 16
7. The following Ball Valves have been discontinued: V14561N, V27561N, V30561N, V40561N, V08131W

LASCO[®]
Fittings, Inc.

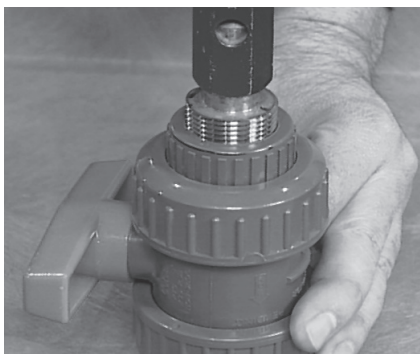
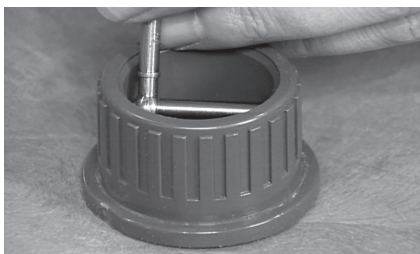
www.lascofittings.com

RECOMMENDATIONS TO INSTALLERS AND USERS

For over 50 years, thermoplastic valves have been growing in acceptance as an effective choice over metal valves in many applications. The advantages of thermoplastic valves include:

- Thermoplastic valves are dielectric, so they do not support an electrical charge. This enables them to be immune from the electro-chemical corrosion that occurs with metal valves.
- Thermoplastic materials are immune to microbiological-influenced corrosion that leads to rust and pitting in metal valves.
- Interior walls are molded with a smooth finish that enables high flow coefficient and consistent performance over an extended service life.
- Up to 50% lighter in weight than metal valve counterparts. This allows for lower freight and handling costs, and ease of installation.
- Lower thermal conductivity than metal valves, minimizing heat loss or gain.

Value-added engineering, adherence to ASTM standards for materials and dimensions, and stringent manufacturing quality make Colonial Thermoplastic Valves your solution for reliable flow control.



All socket and thread dimensions meet ASTM requirements:

- PVC D-2467, D-2464 (ANSI B1.20.1)
- CPVC F-439, F437 (ANSI B1.20.1)
- All flange dimensions are ANSI/ASME B16.5 Class 150 (Steel flange bolt pattern).

Viton® is a registered trademark of DuPont Performance Elastomers.

Material Specifications

PVC conforms to ASTM D-1784, Cell Class 12454

CPVC conforms to ASTM D-1784, Cell Class 23447

PP conforms to ASTM D-4101 (Natural)

See Page 22 For Details on Seat and O-Ring Materials

Plastic piping systems should be engineered, installed, operated and maintained in accordance with accepted standards and procedures. Suitability for the intended application should be determined and verified by the designer and/or installer. Prior to assembly, all piping components should be inspected for damage or irregularities, and for the proper fit of mating components. The published instructions of the manufacturers of all attributes of the piping system (including but not limited to: pipe, fittings, valves, solvent cement & primer, thread sealant or Teflon tape) must be followed. All design, installation, operation and maintenance personnel must be trained on the proper precautions, use, handling, and installation of thermoplastic piping systems prior to use. A NOTE ON VALVE SELECTION: Ball Valves are designed for On/Off service and are NOT SUITABLE for long-term throttling in a semi-closed position. Butterfly Valves ARE SUITABLE for both throttling and for On/Off service.

TEMPERATURE CORRECTION FACTORS FOR VALVES & UNIONS (ABOVE 73°F)

Temp (°F)	PVC	CPVC	PP
73	1.00	1.00	1.00
80	.88	.96	.93
90	.75	.92	.83
100	.62	.85	.74
110	.50	.77	.66
120	.40	.70	.58
130	.30	.62	.51
140	.22	.55	.40
150	NR	.47	.38
160	NR	.40	.35
170	NR	.32	.29
180	NR	.25	.23
200	NR	.18	.14
210	NR	.15	.10
240	NR	NR	NR
280	NR	NR	NR

NR: Not Recommended

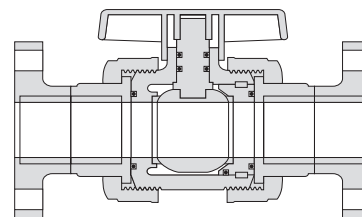
Caution: Colonial recommends a minimum installation distance of 10 X the pipe diameter from a pump or other sources of turbulence.

COMPRESSED AIR WARNING

The products in this document are only intended for use in transferring or storing chemically compatible pressurized liquids. Do not test or use products in this document with compressed air or other gases. Doing so is dangerous and could cause injury or great bodily harm should a system fail under compressed air. Only use products that are specifically designed for compressed air/gas service. Call Colonial technical service for more information.

METAL TO PLASTIC TRANSITION WARNING

Colonial does not recommend the joining of metal pipe threads with plastic female pipe threads. To join a metal system with a plastic system, we recommend the use of a transition union or flanged end connections (shown below).



FULL BLOCK™ INDUSTRIAL TRUE UNION BALL VALVE WITH TEFLON® SEATS

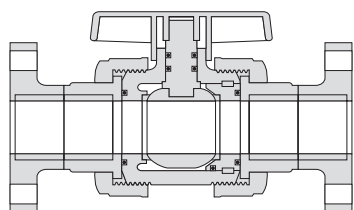


- Premium performance in piping systems since 1984
- Pressure Rating (non-shock water 73°F):
235 psi 1/2" - 2"
150 psi 2-1/2" - 6"
- Pressure rating per ASTM F-1970
- Features external seat-wear adjustment.
- Actuated valve packages available on TUBV's and Butterfly Valves.
- **Full Port Schedule 80 Design**
- Smooth Turning
- Repair Parts Available
- Full Port Sch 80 design virtually eliminates pressure drop, providing excellent flow characteristics.
- Assembled with water soluble, silicone-free O-ring lubricant. (Exception: 2-1/2")
- **Certified to NSF/ANSI 61 and 372**

Note: 3/8" and 1/4" sizes are available (1/2" valves pre-assembled with reducer bushings). Contact Customer Service for part number and pricing.

Opening Torque Under Pressure

Size	Torque (In lbs.)	Size	Torque (In lbs.)
1/2	16	1-1/4, 1-1/2	110
3/4	35	2	180
1	60	3	600
		4	1,000



(Flanged Type)

*¹ 6" Venturied: Assembled with 4" valve and 6 x 4 reducing couplings

*² 2-1/2" TUBVs are from the Commercial Series. Full Port. PTFE seat. 150 psi.

See page 22 for details on O-Ring and Seat Materials

Part No.	Size	Ctn. Qty.	List
PVC w/EPDM O-RINGS: Pricing Schedule A			
Socket & Threaded End Connectors			
V07101N	1/2	24	\$44.69
V08101N	3/4	24	52.33
V10101N	1	24	61.78
V14101N	1-1/4	12	104.95
V17101N	1-1/2	12	104.95
V20101N	2	6	139.96
V27050N * ²	2-1/2	6	196.32

Socket			
V30101N	3	4	\$332.61
V40101N	4	1	574.01
V60101N * ¹	6	1	890.04

Threaded			
V30111N	3	4	\$332.61
V40111N	4	1	574.01

Flanged			
V07121N	1/2	1	\$72.11
V08121N	3/4	1	91.36
V10121N	1	1	110.59
V14121N	1-1/4	1	129.81
V17121N	1-1/2	1	163.49
V20121N	2	1	260.84
V27151N * ²	2-1/2	1	425.00
V30121N	3	1	504.83
V40121N	4	1	1,015.04
V60121N * ¹	6	1	1,480.00

PVC w/Silicone O-RINGS: Pricing Schedule A (For use with Sodium Permanganate systems)

Socket & Threaded End Connectors			
V07109N	1/2	24	\$52.00
V08109N	3/4	24	\$59.00
V10109N	1	24	\$72.00

Part No.	Size	Ctn. Qty.	List
CPVC w/EPDM O-RINGS: Pricing Schedule A			
Socket & Threaded End Connectors			
V07103N	1/2	24	\$70.82
V08103N	3/4	24	89.21
V10103N	1	24	106.19
V14103N	1-1/4	12	178.29
V17103N	1-1/2	12	178.29
V20103N	2	6	238.47

Socket			
V30103N	3	4	\$657.96
V40103N	4	1	1009.52

Threaded			
V30113N	3	4	\$657.96
V40113N	4	1	1009.52

Flanged			
V07123N	1/2	1	\$118.94
V08123N	3/4	1	145.46
V10123N	1	1	168.34
V14123N	1-1/4	1	250.06
V17123N	1-1/2	1	274.57
V20123N	2	1	382.43
V30123N	3	1	990.40
V40123N	4	1	1,735.66

Part No.	Size	Ctn. Qty.	List
PVC w/FKM O-RINGS: Pricing Schedule A			
Socket & Threaded End Connectors			
V07102N	1/2	24	\$50.74
V08102N	3/4	24	58.81
V10102N	1	24	70.87
V14102N	1-1/4	12	116.88
V17102N	1-1/2	12	116.88
V20102N	2	6	154.12
V27052N * ²	2-1/2	6	281.20

Socket			
V30102N	3	4	\$370.56
V40102N	4	1	632.88
V60102N * ¹	6	1	948.29

Threaded			
V30112N	3	4	\$370.56
V40112N	4	1	632.91

Flanged			
V07122N	1/2	1	\$80.74
V08122N	3/4	1	99.37
V10122N	1	1	119.56
V14122N	1-1/4	1	129.81
V17122N	1-1/2	1	178.55
V20122N	2	1	274.82
V27152N	2-1/2	1	473.68
V30122N	3	1	627.26
V40122N	4	1	1,175.34
V60122N * ¹	6	1	1,516.92

Part No.	Size	Ctn. Qty.	List
CPVC w/FKM O-RINGS: Pricing Schedule A			
Socket & Threaded End Connectors			
V07104N	1/2	24	\$78.71
V08104N	3/4	24	99.15
V10104N	1	24	117.98
V14104N	1-1/4	12	193.43
V17104N	1-1/2	12	193.43
V20104N	2	6	274.14
V27054N * ²	2-1/2	6	416.49

Socket			
V30104N	3	4	\$707.52
V40104N	4	1	1,195.69
V60104N * ¹	6	1	1,953.90

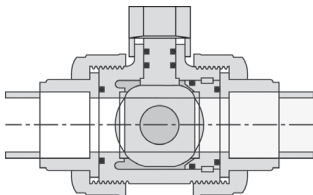
Threaded			
V30114N	3	4	\$707.52
V40114N	4	1	1,195.90

Flanged			
V07124N	1/2	1	\$134.01
V08124N	3/4	1	153.62
V10124N	1	1	178.15
V14124N	1-1/4	1	258.22
V17124N	1-1/2	1	284.37
V20124N	2	1	455.98
V27154N	2-1/2	1	831.02
V30124N	3	1	1,011.65
V40124N	4	1	1,805.95
V60124N * ¹	6	1	2,950.94

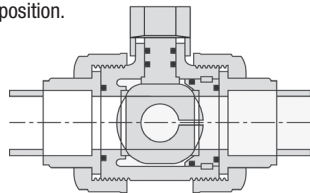
Pressure ratings are for non-shock water at 73°F.

VENTED FULL BLOCK™ TRUE UNION BALL VALVE WITH TEFLON® SEATS (For Sodium Hypochlorite Applications)

For Sodium Hypochlorite (Bleach) and other chemical process applications where entrapped fluids may cause plating, and may form a build up of gasses produced as a result of decomposing solution trapped in the ball and body of the valve in the closed position. The vented Ball Valve provides a solution for the application (see illustration).



Standard Valve - Fluid entrapped in ball and body in closed position.



With Colonial Vented Ball Valves, the ball is vented to the pressure (upstream) port allowing the interior of the ball and body to remain wetted to prevent the occurrence of decomposition and plating.

*¹ 6" Venturied: Assembled with 4" valve and 6 x 4 red couplings

*² 2-1/2" TUBVs are from the Commercial Series. Full Port. PTFE seat. 150 psi.



Part No.	Size	Ctn. Qty.	List
----------	------	-----------	------

PVC w/FKM: Pricing Schedule A

Socket & Threaded End Connectors

V07102N-V	1/2	1	\$59.96
V08102N-V	3/4	1	68.02
V10102N-V	1	1	80.09
V14102N-V	1-1/4	1	132.25
V17102N-V	1-1/2	1	132.25
V20102N-V	2	1	172.55

V27052N-V * ²	2-1/2	1	342.17
--------------------------	-------	---	--------

Socket End Connectors

V30102N-V	3	1	\$393.61
V40102N-V	4	1	655.93
V60102N-V * ¹	6	1	971.33

PVC/FKM THREADED: Pricing Schedule A

V30112N-V	3	1	\$393.61
V40112N-V	4	1	655.93

PVC w/FKM FLANGED: Pricing Schedule A

Socket & Threaded End Connectors

V07122N-V	1/2	1	\$89.96
V08122N-V	3/4	1	108.58
V10122N-V	1	1	128.77
V14122N-V	1-1/4	1	159.54
V17122N-V	1-1/2	1	193.92
V20122N-V	2	1	293.24
V27152N-V	2-1/2	1	505.26
V30122N-V	3	1	650.29
V40122N-V	4	1	1,198.38
V60122N-V * ¹	6	1	1,539.97

Part No.	Size	Ctn. Qty.	List
----------	------	-----------	------

CPVC w/FKM: Pricing Schedule A

Socket & Threaded End Connectors

V07104N-V	1/2	1	\$81.53
V08104N-V	3/4	1	106.41
V10104N-V	1	1	127.69
V14104N-V	1-1/4	1	202.03
V17104N-V	1-1/2	1	202.03
V20104N-V	2	1	293.54

V27054N-V * ²	2-1/2	1	534.37
--------------------------	-------	---	--------

Socket End Connectors

V30104N-V	3	1	\$731.77
V40104N-V	4	1	1,219.94
V60104N-V * ¹	6	1	1,978.16

CPVC/FKM THREADED: Pricing Schedule A

V30114N-V	3	1	\$731.77
V40114N-V	4	1	1,219.94

CPVC w/FKM FLANGED: Pricing Schedule A

V07124N-V	1/2	1	\$143.72
V08124N-V	3/4	1	163.33
V10124N-V	1	1	187.83
V14124N-V	1-1/4	1	274.39
V17124N-V	1-1/2	1	300.55
V20124N-V	2	1	475.38
V27154N-V	2-1/2	1	869.81
V30124N-V	3	1	1,035.92
V40124N-V	4	1	1,830.20
V60124N-V * ¹	6	1	2,975.19

FULL BLOCK™ PP TRUE UNION BALL VALVE WITH TEFLON® SEATS



- Pressure rating 150 psi

Polypropylene valves offer high chemical resistance, low extractable values, and elevated temperature capabilities.* They are suitable for a wide range of applications including corrosive chemical waste, and process piping in chemical and industrial plants, water treatment facilities, laboratories, the semiconductor market, and biotechnology.

Part No.	Size	Ctn. Qty.	List
----------	------	-----------	------

PP w/FKM O-RINGS: Pricing Schedule A

Socket (Fusion) & Threaded End Connectors

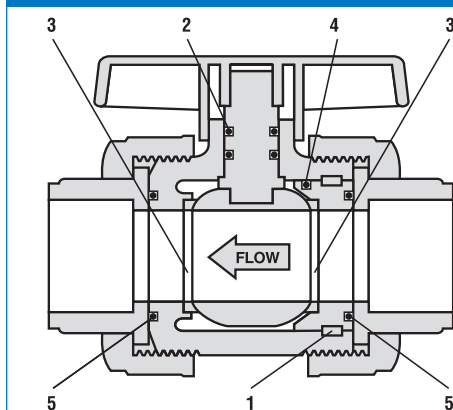
V07106N	1/2	24	\$57.47
V08106N	3/4	24	67.21
V10106N	1	24	85.10
V17106N	1-1/2	12	141.19
V20106N	2	6	191.38



For information on Actuated Valve assemblies and Mounting Brackets, see pages 20-21.

FULL BLOCK™ REPAIR KIT

REPLACEMENT PARTS



Number	Component	Quantity	Material
1	Locking Strip	1	PVDF
2	Stem O-Ring	2	EPDM, FKM
3	Ball Seat	2	TEFLON®
4	Carrier O-Ring	1	EPDM, FKM
5	Face O-Ring	2	EPDM, FKM

Part No.	Size	Ctn. Qty.	List
EPDM: Pricing Schedule B			
V07101NR	1/2	1	\$5.77
V08101NR	3/4	1	6.26
V10101NR	1	1	11.04
V14101NR	1-1/4	1	19.03
V17101NR	1-1/2	1	19.03
V20101NR	2	1	27.11
V30101NR	3	1	35.02
V40101NR	4	1	53.17

FKM: Pricing Schedule B			
V07102NR	1/2	1	\$12.41
V08102NR	3/4	1	17.44
V10102NR	1	1	23.22
V14102NR	1-1/4	1	26.14
V17102NR	1-1/2	1	26.14
V20102NR	2	1	40.51
V30102NR	3	1	86.47
V40102NR	4	1	125.72

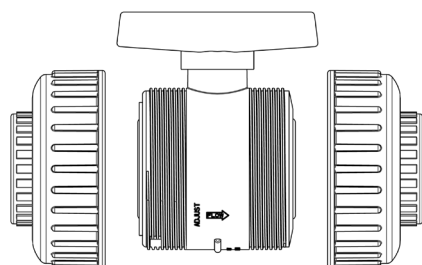
Part No.	Size	Ctn. Qty.	List
REPLACEMENT HANDLES FOR FULL BLOCK™ TRUE UNION BALL VALVES			
Pricing Schedule B			
V07101K2	1/2	1	\$2.62
V08101K2	3/4	1	4.02
V10101K2	1	1	5.27
V14101K2	1-1/4	1	7.90
V17101K2	1-1/2	1	7.90
V20101K2	2	1	10.56
V30101K	3	1	21.09
V40101K	4	1	27.56

OTHER AVAILABLE REPLACEMENT PARTS
 Ball, Stem, End Connector, Union Nut

Check with Customer Service for availability.
 Colored and round handles also available.
 Call customer service for details.

COLONIAL VCR™ SERIES CARTRIDGES

Face to face dimensions, and body threads enable the VCR™ to fit between the end connectors of an existing, installed Colonial Full Block® Series TUBV, and engage properly with the installed union nuts.



Vented TUBV cartridges for use with Sodium Hypochlorite and other high concentrations of bleach are available. (Add "-V" to part number. Contact Customer Service for pricing.) Certified to NSF/ANSI 61 and 372.



Part No.	Size	Ctn. Qty.	List
Material: PVC with EPDM O-rings and PTFE Seats			
Pricing Schedule A			
V07101CR	1/2	48	\$35.05
V08101CR	3/4	48	41.33
V10101CR	1	48	49.37
V17101CR	1-1/4 & 1-1/2	24	78.11
V20101CR	2	12	102.42
V30101CR	3	6	249.05
V40101CR	4	4	420.74

Material: PVC with FKM O-rings and PTFE Seats			
Pricing Schedule A			
V07102CR	1/2	48	\$38.94
V08102CR	3/4	48	46.12
V10102CR	1	48	54.96
V17102CR	1-1/4 & 1-1/2	24	86.95
V20102CR	2	12	114.21
V30102CR	3	6	277.05
V40102CR	4	4	467.16

Part No.	Size	Ctn. Qty.	List
Material: CPVC with FKM O-rings and PTFE Seats			
Pricing Schedule A			
V07104CR	1/2	48	\$57.11
V08104CR	3/4	48	71.85
V10104CR	1	48	86.09
V17104CR	1-1/4 & 1-1/2	24	137.28
V20104CR	2	12	189.25
V30104CR	3	6	563.11
V40104CR	4	4	853.96

Note: VCR cartridges are now in Pricing Schedule A.
 Pricing Schedule E has been eliminated.

PLASTIC LOCKOUT FOR INDUSTRIAL AND COMMERCIAL TRUE UNION BALL VALVES, AND SUPER C BALL VALVES

ROUND HANDLES

Part No.	Sizing for Industrial Full Block Series & Commercial Series TUBV	Sizing for Super C & 2-Piece Compact Ball Valves	Ctn. Qty.	List
Pricing Schedule B				
V481	Fits Size 1/2 - 1" TUBV	Fits Size 1/2 - 1" Valve	1	\$68.00
V482	Fits Size 1-1/4 - 2" TUBV	Fits Size 1-1/4 - 2" Valve	1	93.00
V483	Fits Size 2-1/2 - 4" TUBV	Fits Size 2-1/2 & 3" Valve	1	114.00



(Shown on TUBV)*

Note: Padlock not included

Part No.	Size	Ctn. Qty.	List
PVC: Pricing Schedule B			
V07101KR	1/2	1	\$2.63
V08101KR	3/4	1	3.02
V10101KR	1	1	3.97

Round handles available for 1/2, 3/4, and 1" Full Block TUBV. Replaces original T-handles.

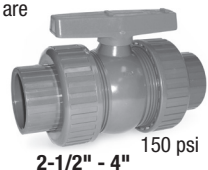
Pressure ratings are for non-shock water at 73°F.

COMMERCIAL TRUE UNION BALL VALVE WITH PTFE SEATS

- PTFE Seats
- Pressure rating per ASTM F-1970
- Schedule 80 Sockets and NPT Threads
- Blocked Carrier
- Replaceable Handle
- Smooth Turning
- Adjustable Seat
- Sizes 1-1/2" & 2-1/2" are Full Port, Sch 80. The remaining sizes are standard port.
- Certified to NSF/ANSI 61 and 372.



235 psi



150 psi

Note: 3/8" and 1/4" sizes are available (1/2" valves pre-assembled with reducer bushings). Contact Customer Service for part number and pricing.

See page 22 for details on O-Ring and Seat Materials



Part No.	Size	Ctn. Qty.	List
PVC w/EPDM O-Rings: Pricing Schedule A			
Socket & Threaded End Connectors			
V07050N	1/2	48	\$24.15
V08050N	3/4	36	30.99
V10050N	1	24	40.87
V14050N	1-1/4	24	62.29
V17050N	1-1/2	24	83.25
V20050N	2	12	110.00
V27050N	2-1/2	12	196.32

Part No.	Size	Ctn. Qty.	List
PVC w/FKM O-RINGS: Pricing Schedule A			
Socket & Threaded End Connectors			
V27052N	2-1/2	12	\$281.20

For 3 & 4" Full Port, Sch 80 TUBVs, see page 4

For 3 & 4" Economy TUBVs, see below

Part No.	Size	Ctn. Qty.	List
CPVC w/EPDM O-RINGS: Pricing Schedule A			
Socket & Threaded End Connectors			
V27053N	2-1/2	6	\$394.74
Socket			
V30053N	3	6	482.11
V40053N	4	1	868.42
Threaded			
V30153N	3	6	482.11
V40153N	4	1	868.42

Part No.	Size	Ctn. Qty.	List
CPVC w/FKM O-RINGS: Pricing Schedule A			
Socket & Threaded End Connectors			
V27054N	2-1/2	12	\$416.49

COML TUBV Series Replacement Handles:			
Pricing Schedule B			
V07050K	1/2	1	\$3.11
V08050K	3/4	1	4.00
V10050K	1	1	4.89
V14050K	1-1/4	1	7.56
V17050K	1-1/2	1	8.00
V20050K	2	1	10.67
V27050K	2-1/2	1	13.33
V30050K	3	1	14.00
V40050K	4	1	18.00

801 SERIES TRUE UNION BALL VALVE

- Max Pressure 150 psi
- Designed for swimming pool, greenhouse, pond, commercial or AG-irrigation, and other water applications.
- PE seat
- Blocked Carrier
- Standard Port
- Not for use in heavy industrial or concentrated chemical applications. (For these applications, see Industrial TUBV, page 4)
- Not for use in golf or other heavy-turf irrigation systems



Part No.	Size	Ctn. Qty.	List
PVC with EPDM O-Rings and TPE Seats.			
Blue ABS Handle: Pricing Schedule A			
Socket & Threaded End Connectors			
V17801N	1-1/2	24	\$58.13
V20801N	2	12	76.96
V27801N	2-1/2	6	136.73
Soc x Soc			
V30801N	3	4	\$232.52
V40801N	4	1	401.17
Threaded			
V30811N	3	4	\$232.52
V40811N	4	1	401.17
Flanged			
V17801NF	1-1/2	1	\$116.66
V20801NF	2	1	197.84
V27801NF	2-1/2	1	278.83
V30801NF	3	1	404.74
V40801NF	4	1	842.20

EPDM O-Rings Kit for MKIII Series 801N and 131W Ball Valve: Pricing Schedule B			
V10131WR	1	1	\$4.80 Fits V10131W
V17801NR	1-1/2	1	6.17 Fits V17131W, V17801N
V20801NR	2	1	6.75 Fits V20131W, V20801N
V27801NR	2-1/2	1	8.42 Fits V27801N
V30801NR	3	1	11.42 Fits V30801N, V30811N
V40801NR	4	1	15.33 Fits V40801N, V40811N

Part No.	Size	Ctn. Qty.	List
801N Series Replacement Handles:			
Pricing Schedule B			
V17801K	1-1/2	1	\$8.89
V20801K	2	1	11.11
V27801K	2-1/2	1	16.67
V30801K	3	1	22.22
V40801K	4	1	31.11

801N Series Replacement End Connectors:			
Socket End Pc			
V17801Z3	1-1/2	1	\$10.00
V20801Z3	2	1	\$12.00
V27801Z3	2-1/2	1	\$14.00
V30801Z3	3	1	\$15.00
V40801Z3	4	1	\$20.00

FITP End Pc			
V17811Z3	1-1/2	1	\$10.00
V20811Z3	2	1	\$12.00
V27811Z3	2-1/2	1	\$14.00
V30811Z3	3	1	\$15.00
V40811Z3	4	1	\$20.00

WHITE PVC SINGLE UNION BALL VALVES

- PVC/ EPDM
- Pressure Rating: 150 psi
- Economically priced for Irrigation, Water Treatment, Pool / Spa, and Commercial Plumbing applications.
- Blocked Carrier
- Standard Port



Part No.	Size	Ctn. Qty.	List
Pricing Schedule A			
Socket			
V10131W	1	50	\$22.46
V17131W	1-1/2	30	30.73
V20131W	2	20	41.37

Part No.	Size	Ctn. Qty.	List
Replacement Handles: Pricing Schedule B			
V10801K	1	1	\$6.50
V17801K	1-1/2	1	8.89
V20801K	2	1	11.11

Pressure ratings are for non-shock water at 73°F.

SUPER "C"TM INDUSTRIAL COMPACT BALL VALVE WITH TEFLON[®] SEATS



- Pressure Rating: 235 psi
- Smooth Turning, Industrial Strength Compact Valve.
- Permanently Sealed Maintenance Free.
- Replaceable Handles available.
- 1/2" - 1-1/2" are Full Port Sch 80. 2" has standard port. All have Sch 80 sockets or NPT Threads.
- Pressure Rating per ASTM F-1970
- **Certified to NSF/ANSI 61 and 372**



Part No.	Size	Ctn. Qty.	List
PVC w/EPDM O-RINGS: Pricing Schedule A			
Socket			
V07191N	1/2	24	\$19.64
V08191N	3/4	24	24.40
V10191N	1	24	29.09
V14191N	1-1/4	12	42.31
V17191N	1-1/2	12	54.04
V20191N	2	12	72.85
Threaded			
V07201N	1/2	24	\$19.64
V08201N	3/4	24	24.40
V10201N	1	24	29.09
V14201N	1-1/4	12	42.31
V17201N	1-1/2	12	54.04
V20201N	2	12	72.85

Part No.	Size	Ctn. Qty.	List
CPVC w/FKM O-RINGS: Pricing Schedule A			
Socket			
V07194N	1/2	24	\$28.52
V08194N	3/4	24	38.04
V10194N	1	24	47.57
V14194N	1-1/4	12	78.92
V17194N	1-1/2	12	97.40
V20194N	2	12	126.86
Threaded			
V07204N	1/2	24	\$28.52
V08204N	3/4	24	38.04
V10204N*	1	24	47.57
V14204N*	1-1/4	24	78.92
V17204N*	1-1/2	24	97.40
V20204N*	2	24	126.86

*Special Order Contact C.S. for MOQ and Lead Time.

TWO-PIECE INDUSTRIAL COMPACT BALL VALVE WITH TEFLON[®] SEATS

- Pressure Rating: 150 psi
- Low torque, smooth turning compact valves.
- Sch 80 Sockets
- Standard Port



Part No.	Size	Ctn. Qty.	List
PVC w/EPDM O-RINGS: Pricing Schedule A			
Socket			
V27191N	2-1/2	12	\$125.94
V30191N	3	8	257.67
V40191N	4	2	386.51

LABORATORY BALL VALVE

- Pressure Rating: 150 psi



Part No.	Size	Ctn. Qty.	List
PVC/FKM: Pricing Schedule A			
Socket			
V03512N	1/4 FPTxFPT	24	\$18.81
V03522N	1/4 FPTxMPT	24	18.81
V03532N	1/4 MPTxMPT	24	18.81
V03542N	1/4 HBxMPT	24	18.81
V03552N	1/4 FPTxHB	24	18.81

CPVC CTS BALL VALVE SxS

- Molded from ASTM D1784, Cell Class 23447 virgin CPVC resin. Suitable for hot or cold water systems.
- Conforms to ASTM D2846 for dimensions of socket and wall thickness.
- Pressure rated up to 100 psi @ 180° F, 150 psi @ 73° F, non-shock water.
- 100% Leak-tested
- Bi-directional, can be installed in either direction
- Sizes 1/2 - 1" are full port; sizes 1-1/4 - 2" are standard port
- Certified to NSF/ANSI 61 and 372.



Part No.	Size	Ctn. Qty.	List
CPVC w/EPDM O-RINGS: Pricing Schedule T			
Socket			
V07491CE	1/2	100	\$8.32
V08491CE	3/4	100	10.76
V10491CE	1	100	18.75
V14491CE	1-1/4	100	33.91
V17491CE	1-1/2	48	40.16
V20491CE	2	24	53.21

INDUSTRIAL SCH 80 MIP COMPACT VALVE



- Sch 80 Sockets
- Standard Port
- Pressure Rating 150 psi
- Individually Boxed
- Certified to NSF/ANSI 61 and 372.
- PTFE Seats and FPM/FKM O-Rings* for Higher Corrosion Resistance and Longer Service Life
- Replaceable Handle
- 100% Leak Tested
- Gray PVC and Light Gray CPVC

Part No.	Size	Ctn. Qty.	List
Gray PVC FKM O-Rings, PTFE Seat, Socket			
Pricing Schedule M			
V07692N	1/2	100	\$18.07
V08692N	3/4	100	23.81
V10692N	1	100	33.66
V14692N	1-1/4	100	42.68
V17692N	1-1/2	48	67.63
V20692N	2	24	85.20
Gray PVC FKM O-Rings, PTFE Seat, Threaded			
Pricing Schedule M			
V07792N	1/2	100	\$18.07
V08792N	3/4	100	23.81
V10792N	1	100	33.66
V14792N	1-1/4	100	42.68
V17792N	1-1/2	48	67.63
V20792N	2	24	85.20

Part No.	Size	Ctn. Qty.	List
Light Gray CPVC FKM O-Rings, PTFE Seat, Socket: Pricing Schedule M			
V07694N	1/2	100	\$32.66
V08694N	3/4	100	39.75
V10694N	1	100	56.52
V14694N	1-1/4	100	69.64
V17694N	1-1/2	48	113.54
V20694N	2	24	142.56
Light Gray CPVC FKM O-Rings, PTFE Seat, Threaded: Pricing Schedule M			
V07794N	1/2	100	\$32.66
V08794N	3/4	100	39.75
V10794N	1	100	56.52
V14794N	1-1/4	100	69.64
V17794N	1-1/2	48	113.54
V20794N	2	24	142.56

Pressure ratings are for non-shock water at 73°F.

COMMERCIAL SCH 80 GRAY AND WHITE MIP (MOLDED-IN-PLACE) BALL VALVE

- Sch 80 Sockets
- Standard Port
- Pressure Rating: 150 psi
- Individually Boxed
- Replaceable Handle**
- 100% Leak-Tested
- Certified to NSF/ANSI 61 and 372.
- Blue Handle (as of December 2014)
- Rigid PVC Ball and Stem for Longer Service Life



See page 22 for details on O-Ring and Seat Materials

Part No.	Size	Ctn. Qty.	List
GRAY PVC w/EPDM: Pricing Schedule M			
Socket			
V07691N	1/2	100	\$5.53
V08691N	3/4	100	6.87
V10691N	1	100	9.72
V14691N	1-1/4	100	15.72
V17691N	1-1/2	48	28.29
V20691N	2	24	33.54
White PVC w/EPDM: Pricing Schedule M			
Socket			
V07491N	1/2	100	\$5.53
V08491N	3/4	100	6.87
V10491N	1	100	9.72
V14491N	1-1/4	100	15.72
V17491N	1-1/2	48	28.29
V20491N	2	24	33.54
V27491N	2-1/2	12	82.37
V30491N	3	12	135.81
V40491N	4	6	261.64

Part No.	Size	Ctn. Qty.	List
GRAY PVC w/EPDM: Pricing Schedule M			
Threaded			
V07791N	1/2	100	\$5.53
V08791N	3/4	100	6.87
V10791N	1	100	9.72
V14791N	1-1/4	100	15.72
V17791N	1-1/2	48	28.29
V20791N	2	24	33.54
White PVC w/EPDM: Pricing Schedule M			
Threaded			
V07591N	1/2	100	\$5.53
V08591N	3/4	100	6.87
V10591N	1	100	9.72
V14591N	1-1/4	100	15.72
V17591N	1-1/2	48	28.29
V20591N	2	24	33.54
V27591N	2-1/2	12	82.37
V30591N	3	12	135.81
V40591N	4	6	261.64

REPLACEMENT HANDLE FOR COMMERCIAL AND INDUSTRIAL MIP VALVE

Fits Industrial and Commercial MIP Valves.

Note: System must be de-pressurized prior to replacing handle. Each kit includes handle and replacement screw.



Part No.	Size	Ctn. Qty.	List
Pricing Schedule B			
V07491K	1/2	1	\$.94
V08491K	3/4	1	1.07
V10491K	1	1	1.30
V14491K	1-1/4	1	1.66
V17491K	1-1/2	1	3.54

Part No.	Size	Ctn. Qty.	List
Pricing Schedule B			
V20491K	2	1	\$4.73
V27491K	2-1/2	1	5.91
V30491K	3	1	9.46
V40491K	4	1	14.19

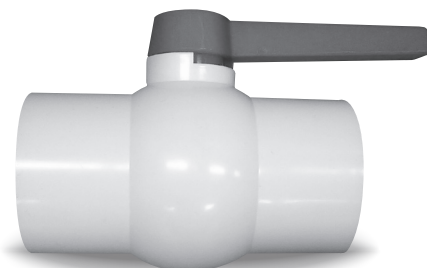
ECONOMY SCH 40 MIP BALL VALVE

- Max Pressure Rating: 150 psi
- Standard Port
- Suitable for Irrigation, Swimming Pool, and other water applications.
- Individually barcoded
- Handle not replaceable.
- Blue Handle (as of December 2014)
- PP Ball and Stem



Part No.	Size	Ctn. Qty.	List	Part No.	Size	Ctn. Qty.	List
White PVC w/ EPDM: Pricing Schedule M				White PVC w/ EPDM: Pricing Schedule M			
Socket				Threaded			
V07461N	1/2	100	\$4.81	V07561N	1/2	100	\$4.81
V08461N	3/4	100	5.88	V08561N	3/4	100	5.88
V10461N	1	100	8.10	V10561N	1	100	8.10
V14461N	1-1/4	48	12.99	V14561N	1-1/4	*	*
V17461N	1-1/2	48	18.51	V17561N	1-1/2	48	18.51
V20461N	2	24	25.50	V20561N	2	24	25.50
				* Discontinued			

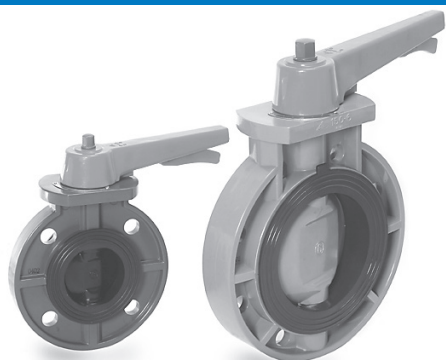
2-1/2" – 4" Size



Part No.	Size	Ctn. Qty.	List
Socket			
V27461N	2-1/2	12	\$57.66
V30461N	3	9	95.07
V40461N	4	4	183.15

Pressure ratings are for non-shock water at 73°F.

411N INDUSTRIAL SERIES BUTTERFLY VALVE WITH LOCKING PP LEVER HANDLE



- Full Boot Seal design. Requires no flange gaskets. ANSI Class 150 flange bolt pattern.
- Pressure Rating: 150 psi
- ANSI class 150 Bolt Pattern
- 410 Stainless Steel Stem
- Handle Includes Lockout Hole
- 411N BFV is direct retrofit for ©ASAHI type 56/57 and Pool Pro BFV (Same Face to Face DIM)
- Butterfly Valve Flange Bolt Sets and Contractor Kits - Page 15.

411N Series also available in PP and PVDF. Please call customer service for price and availability.

If used in an HDPE piping system, flange spacers and/or chamfered flange adapters may be required. Please contact your HDPE fittings distributor.

©ASAHI/America, 35 Green St., Malden, MA 02148

See page 22 for details on O-Ring and Seat Materials

Part No.	Size	Ctn. Qty.	List	Part No.	Size	Ctn. Qty.	List
PVC/EPDM with PP Disc: Pricing Schedule C				PVC/FKM with PP Disc: Pricing Schedule C			
V20411N	2	4	\$237.35	V20412N	2	4	\$589.47
V27411N	2-1/2	4	251.56	V27412N	2-1/2	4	610.53
V30411N	3	4	255.52	V30412N	3	4	621.05
V40411N	4	4	296.20	V40412N	4	4	768.42
V50411N	5	4	419.43	V60412N	6	4	1,147.37
V60411N	6	4	438.22	V80412N	8	1	2,000.00
V80411N	8	1	744.97				
PVC/BUNA with PP Disc: Pricing Schedule C							
V20415N	2	4	\$237.35				
V27415N	2-1/2	4	251.58				
V30415N	3	4	255.52				
V40415N	4	4	296.20				
V50415N	5	4	419.43				
V60415N	6	4	438.22				
V80415N	8	1	744.97				
CPVC/EPDM with CPVC Disc: Pricing Schedule C				CPVC/FKM with CPVC Disc: Pricing Schedule C			
V20413N	2	4	\$405.26	V20414N	2	4	\$815.79
V27413N	2-1/2	4	442.11	V27414N	2-1/2	4	884.21
V30413N	3	4	473.68	V30414N	3	4	926.32
V40413N	4	4	547.37	V40414N	4	4	1189.47
V60413N	6	4	757.89	V60414N	6	4	1873.68
V80413N	8	1	1315.79	V80414N	8	1	3157.89

411 N SERIES BUTTERFLY VALVE REPLACEMENT HANDLE



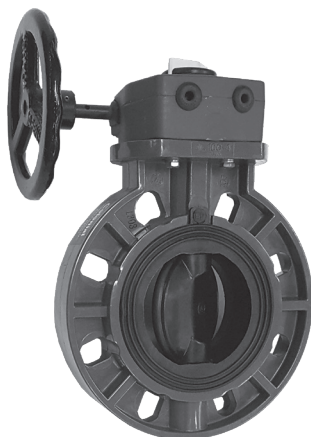
Part No.	Size	Ctn. Qty.	List	Part No.	Size	Ctn. Qty.	List
Pricing: Schedule B				Pricing: Schedule B			
V20411K	2	1	\$36.17	V40411K	4	1	\$44.68
V27411K	2-1/2	1	40.43	V60411K	6	1	87.23
V30411K	3	1	38.83	V80411K	8	1	112.77

411 NG SERIES BUTTERFLY VALVE WITH GEAR OPERATOR 2 - 6"

NOTE: For sizes 8 - 24", see page 12

Gear Operator - Corrosion Resistant Aluminum Alloy housing with red oxide primer, cast iron handwheel, and Nitrotec® treated output shaft, 40:1 ratio worm gear, 10 turns to close.

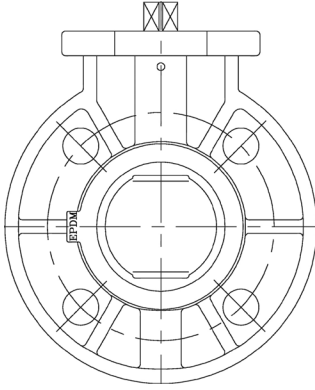
Chain wheel available - See bottom of page 11 for detail.



Part No.	Size	Ctn. Qty.	List	Part No.	Size	Ctn. Qty.	List
PVC/EPDM with PP Disc: Pricing Schedule C				PVC/FKM with PP Disc: Pricing Schedule C			
V20411NG	2	1	\$773.68	V20412NG	2	1	\$1,015.79
V27411NG	2-1/2	1	805.26	V27412NG	2-1/2	1	1,042.11
V30411NG	3	1	805.26	V30412NG	3	1	1,042.11
V40411NG	4	1	857.89	V40412NG	4	1	1,184.21
V60411NG	6	1	1,026.32	V60412NG	6	1	1,526.32
PVC/BUNA with PP Disc: Pricing Schedule C							
V20415NG	2	1	\$773.68				
V27415NG	2-1/2	1	805.26				
V30415NG	3	1	805.26				
V40415NG	4	1	857.89				
V60415NG	6	1	1,026.32				
CPVC/EPDM with CPVC Disc: Pricing Schedule C				CPVC/FKM with CPVC Disc: Pricing Schedule C			
V20413NG	2	1	\$973.68	V20414NG	2	1	\$1,336.84
V27413NG	2-1/2	1	1,026.32	V27414NG	2-1/2	1	1,473.68
V30413NG	3	1	1,026.32	V30414NG	3	1	1,473.68
V40413NG	4	1	1,078.95	V40414NG	4	1	1,684.21
V60413NG	6	1	1,347.37	V60414NG	6	1	2,368.42

Pressure ratings are for non-shock water at 73°F.

411ND SERIES BUTTERFLY VALVE

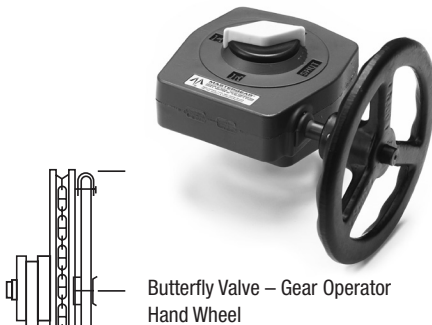


Direct-mount ready Butterfly Valves with ISO 5211 mounting pattern.

- Full Boot Seal design. Requires no flange gaskets. ANSI Class 150 flange bolt pattern.
- 410 Stainless Steel Stem.
- Custom-fabricated reach rods available to open/close "ND" Series BFV for commercial pool surge tanks, ponds, and other low pressure applications. Contact customer service for more information.

Part No.	Size	ISO Pattern	Sq. Stem (mm on flats)	Opening Torque (in. lbs.)	Qty.	List
PVC/EPDM: Pricing Schedule C						
V20411ND	2	F05 & F07	11	113	1	\$237.89
V27411ND	2-1/2	F05 & F07	14	260	1	255.32
V30411ND	3	F05 & F07	14	260	1	255.32
V40411ND	4	F07	14	391	1	291.16
V60411ND	6	F07 & F10	17	738	1	431.13
V80411ND	8	F10	22	1302	1	692.05
V100411ND	10	F10	22	2604	1	1,178.87
V120411ND	12	F12	27	3906	1	1,654.19
CPVC/EPDM with CPVC Disc: Pricing Schedule C						
V20413ND	2	F05 & F07	11	113	1	\$389.47
V27413ND	2-1/2	F05 & F07	14	260	1	436.84
V30413ND	3	F05 & F07	14	260	1	436.84
V40413ND	4	F07	14	391	1	500.00
V60413ND	6	F07 & F10	17	738	1	752.63
V80413ND	8	F10	22	1302	1	1,447.37
PVC/FKM: Pricing Schedule C						
V20412ND	2	F05 & F07	11	113	1	\$600.00
V27412ND	2-1/2	F05 & F07	14	260	1	631.58
V30412ND	3	F05 & F07	14	260	1	631.58
V40412ND	4	F07	14	391	1	789.47
V60412ND	6	F07 & F10	17	738	1	1,157.89
V80412ND	8	F10	22	1302	1	1,473.68
CPVC/FKM with CPVC Disc: Pricing Schedule C						
V20414ND	2	F05 & F07	11	113	1	\$889.47
V27414ND	2-1/2	F05 & F07	14	260	1	942.11
V30414ND	3	F05 & F07	14	260	1	942.11
V40414ND	4	F07	14	391	1	1,263.16
V60414ND	6	F07 & F10	17	738	1	1,894.74

GEAR OPERATORS FOR V40411ND (DIRECT MOUNT) BUTTERFLY VALVES



Butterfly Valve – Gear Operator Hand Wheel

Specify length and required material for chain

3 foot clearance from bottom of chain loop to operating level

Aluminum Gear Operator

Corrosion-resistant Aluminum Alloy housing with red oxide primer, cast iron handwheel and Nitrotec® treated steel output shaft, 40:1 ratio worm gear, 10 turns to close. Weight: 4 lbs. Not submersible.

Pricing Schedule B

Part Number	ISO Mounting	Ctn Qty	List Price	Note
9801-ISO	F07 & F10	1	\$496.00	Fits ND BFV 2 - 8"
CR6	6" Diam Handwheel for 9801 Gear Op	1	56.00	
9801-ON	2" Operating Nut Fits 9801 Series Gear Operator	1	160.00	

Stem coupling included: Please specify the required stem coupling size (Square 11mm, 14mm, or 17mm) when ordering

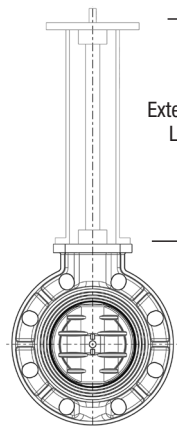
Chain Wheel option:

Valves aren't always situated in easy to access locations. Often, gaining access to open or close a valve necessitates dangerous climbing or maneuvering. A Chain Wheel can be installed in minutes and provides an easy, inexpensive way to ensure employee safety and effective valve operation. Opening and closing valves becomes as easy as standing at ground level and simply pulling the chain to operate the chain wheel above.

- Chain sprocket is sized to clamp on the CR-6 hand-wheel for safe, effective manual valve operation.
- All units come complete with sprocket wheel, chain guide, set collar, chain, and retaining-cable safety kit.
- Material options of Galvanized, Zinc Plated, or Stainless Steel.
- When ordering, specify length of chain required (from the top of the handwheel to the location where the chain will be handled).

Contact Customer Service for a quotation.

BFV STEM EXTENSIONS FOR 411ND



Top and bottom mounting plates are set up for ISO 5211 mounting. Suitable for Gear Operators or Actuators.

Stem
Extension
Length

Note: To order a completed assembly, use the separate part numbers for the valve, the stem extension, and the gear OP or actuator.

Also indicate the exact length that you require for the stem extension.

Material Options:
Stainless steel or carbon steel.

STEM EXTENSION FOR GEAR OP OR ACTUATOR MOUNTING

Length (in)	F07 Mounting Part No.	F10 Mounting Part No.	F12 Mounting Part No.
6-12	V411N01	V411N01A	V411N01B
12-24	V411N02	V411N02A	V411N02B
25-48	V411N03	V411N03A	V411N03B
49-84	V411N04	V411N04A	V411N04B
85-108	V411N05	V411N05A	V411N05B
Fits BFV Sizes	2 - 4"	6 - 10"	12"
Top of Extension Stem-Square Options	11 - 14 mm	17 - 22 mm	27 mm

Example: Order V60411ND & V411N04A(40) in order to receive a 6" BFV, PVC/EPDM, with a 40" Stem Extension that is set up for ISO 5211, F10 mounting.

Example 2: Order V40411ND & V411N02(24) & 9801-411 in order to receive a 4" BFV, PVC/EPDM, with a 24" Stem Extension, and an Aluminum Gear Operator mounted to the top of the Stem Extension.

Example 3: (Ordering Stem Extension only for field installation) Order V411N03A (48), 17mm Square to receive a 48" stem extension with ISO F10 mounting and a 17mm stem square at the top (male) and bottom (female).

**Please specify length when ordering.
Call Customer Service for price and lead time.**

411NG SERIES BUTTERFLY VALVE WITH GEAR OPERATOR: 8 - 12"



8 - 12" Diameter

- Pressure Rating: 150 psi 8, 10"
100 psi 12"
- Full Boot Seal design. Requires no flange gaskets. ANSI Class 150 flange bolt pattern.
- 410 Stainless Steel Stem.
- 411NG Series also available in PP and PVDF. Call customer service for price and availability.
- Standard Gear Operator is cast iron with corrosion-resistant paint and SS fasteners.
- Not submersible.
- Chain wheel available – See bottom of page 11 for detail.

Large Diameter Butterfly Valves

14 - 24" Diameter

- 411NGP Series 14 - 24" Beige Polypropylene Body and Disc.
- EPDM Liner and O-rings, 316 SS Stem, Cast Iron Gear Operator with 316 SS hardware, ANSI B16.5, Class 150 Bolt Pattern.
- Not submersible.

Pressure rating: 86 psi, 14-16"
72 psi, 18"
51 psi, 20 - 24"

Part No.	Size	Ctn. Qty.	List	Part No.	Size	Ctn. Qty.	List
PVC/EPDM with PP Disc: Pricing Schedule C				PVC/FKM with PP Disc: Pricing Schedule C			
V80411NG	8	1	\$1,117.15	V80412NG	8	1	\$2,315.79
V100411NG	10	1	1,551.58	V100412NG	10	1	3,780.00
V120411NG	12	1	2,186.15	V120412NG	12	1	4,947.37
Part No.	Size	Ctn. Qty.	List	Part No.	Size	Ctn. Qty.	List
CPVC/EPDM with CPVC Disc: Pricing Schedule C				CPVC/FKM with CPVC Disc: Pricing Schedule C			
V80413NG	8	1	\$1,736.84	V80414NG	8	1	\$3,526.32
V100413NG	10	1	2,578.95	V100414NG	10	1	6,105.26
V120413NG	12	1	3,578.95	V120414NG	12	1	8,210.53

LARGE DIAMETER POLYPROPYLENE (PP) BUTTERFLY VALVES 14 - 24"

Part No.	Size	Ctn. Qty.	List
PP/EPDM: Pricing Schedule C			
V140411NGP	14	1	\$4,183.00
V160411NGP	16	1	5,990.00
V180411NGP	18	1	12,265.00
V200411NGP	20	1	18,275.00
V240411NGP	24	1	29,086.00

Pressure ratings are for non-shock water at 73°F.
Butterfly Valve Flange Bolt Kits - Page 15

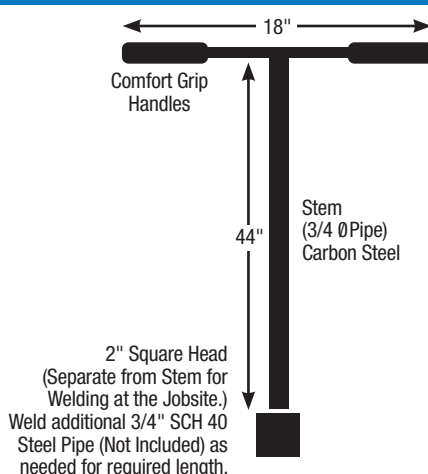
NEW - 411SV BUTTERFLY SHUT-OFF VALVE FOR COMMERCIAL POOL / AQUATIC SURGE TANKS



- Shut-off valve for gravity-flow pipe that drains into surge tank.
- Submersible.
- Full boot seal for durable performance. No gaskets required.
- ANSI B16.5 Class 150 Flange Pattern
- Stainless Steel 2" Operating nut is retained by the stainless steel rails, which also stop rotation in the full-open or full-closed position, (with no locking positions between).
- Designed to be operated with a 2" square valve key. (Colonial Part No V417681 2" Square Valve Key KIT is sold separately)
- The maximum recommended operating pressure at ambient temperature is 15 psi. This valve is designed to be used in the full-open or full-closed position on a drain pipe.
- Takeout dimension equal to Asahi Type 57 & Pool Pro BFV

Part No.	Size	Ctn. Qty.	List
PVC w/EPDM O-Rings S x S: Pricing Schedule C			
V60411SV	6	1	\$1,095.00
V80411SV	8	1	1,236.97
V100411SV	10	1	1,595.30
V120411SV	12	1	1,939.60

2" SQUARE VALVE KEY KIT

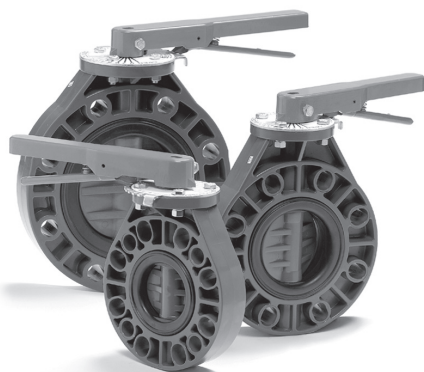


Part No.	Size	Ctn. Qty.	List
Carbon Steel: Pricing Schedule B			
V417681	4'	1	\$154.00

Includes carbon steel handle with 44" stem, and separate 2" head for welding at the jobsite. Customer can weld additional 3/4" Sch 40 steel pipe (not included) as needed for the required length. Note: Customer must bevel ends of pipe to allow for proper weld-bead.

NOTE: Requires assembly (welding) by customer at jobsite

311N SERIES BUTTERFLY VALVE WITH STEEL LEVER HANDLE: 3, 4, AND 6"



- Full Boot Seal design. Requires no flange gaskets. ANSI Class 150 flange bolt pattern.
- Pressure Rating: 150 psi
- ANSI Class 150 Bolt Pattern
- 410 SS Stem
- Takeout dimension equal to Bray & many other Cast Iron BFVs

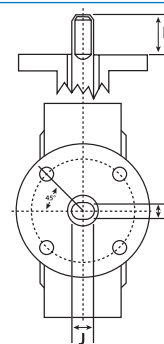
Stem extensions can be added to BFV and Gear Operator assemblies. Order stem extension separately.

If used in an HDPE piping system, flange spacers and/or chamfered flange adapters may be required. Please contact your HDPE fittings distributor.

Part No.	Size	Ctn. Qty.	List
PVC: Pricing Schedule C			
V30311N	3	4	\$267.86
V40311N	4	4	314.31
V60311N	6	4	475.57
REPLACEMENT HANDLE Pricing Schedule B			
V30311K	3	1	\$42.00
V40311K	4	1	42.00
V60311K	6	1	49.28

DIMENSIONS FOR TOP PLATE

Size	L	J	K	Bolt Plate Circle (PCD)	No. of Holes	Hole Diam.
3"	1-1/4	9/16	3/8	3-1/4	4	7/16
4"	1-1/4	5/8	7/16	3-1/4	4	7/16
6"	1-1/4	5/8	7/16	3-1/4	4	7/16



311NG BUTTERFLY VALVES WITH GEAR OPERATOR



Part No.	Size	List	Description
PVC/EPDM: Pricing Schedule C			High strength corrosion resistant Coated Aluminum Alloy housing with coated cast iron handwheel and Nitrotec® treated steel output shaft, 40:1 ratio worm gear, 10 turns to close, mounted to 311N series butterfly valve.
V30311NG	3	\$700.71	
V40311NG	4	740.00	
V60311NG	6	897.16	
*Equivalent to medium grade stainless steel for corrosion-resistance. Gear operator is not submersible.			
Suitable as Isolation valves in irrigation or other water projects. If used in an HDPE piping system, flange spacers and/or chamfered flange adapters may be required. Please contact your HDPE fittings distributor.			

GEAR OPERATORS FOR 311N SERIES BUTTERFLY VALVES 3, 4 AND 6"

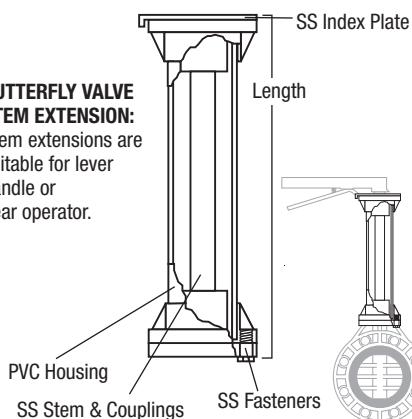


Chain wheel available – See bottom of page 11 for detail.

Part No.	Ctn. Qty.	List	Description
Pricing Schedule B			For retrofit: Mounts directly to 311N series BFVs. High strength corrosion resistant Aluminum Alloy housing with coated cast iron handwheel and Nitrotec® treated steel output shaft, 40:1 ratio worm gear, 10 turns to close.
9801-311	1	\$496.00	
CR6 6" Diam Handwheel for 9801 Gear Op	1	56.00	
9801-ON 2" Operating Nut for 9801 Gear Op	1	160.00	
Stem coupling included: Specify DB1-DD3 to fit 3" 311 series BFF, or DB1-DD46 to fit 4 or 6" 311 series BFF			
*Equivalent to medium grade stainless steel for corrosion-resistance. Gear operator is not submersible.			

311N SERIES BUTTERFLY VALVE STEM EXTENSIONS: 3, 4, AND 6"

BUTTERFLY VALVE STEM EXTENSION:
Stem extensions are suitable for lever handle or gear operator.



Length (in)	FOR 3" BFF Part No.	FOR 4" AND 6" BFF Part No.
6-12	V311N301	V311N01
12-24	V311N302	V311N02
25-48	V311N303	V311N03
49-84	V311N305	V311N05
85-108	V311N308	V311N08
<p>Note: To order a completed assembly, use the separate part numbers for the valve and the stem extension. Also indicate the exact length that you require for the stem extension.</p> <p>Gear Operated Example: Order V40311NG & V311N02 (24) in order to receive a 4 BFF with 24" Stem Extension, with Gear Operator mounted to the top of the Stem Extension.</p> <p>Lever Handle Example: Order V40311N & V311N02 (24) in order to receive a 4 BFF with 24" Stem Extension, with Lever Handle and Index Plate mounted to top of Stem Extension.</p> <p>Please specify length when ordering. Call Customer Service for price and lead time.</p>		

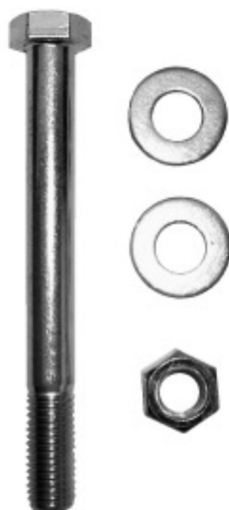
711N SERIES COMMERCIAL BUTTERFLY VALVE



Part No.	Size	Ctn. Qty.	List	Part No.	Size	Ctn. Qty.	List
PVC / EPDM, 316 SS Stem, Blue ABS Lever Handle: Pricing Schedule C				711N Series Replacement Handles: Pricing Schedule B			
V30711N	3	4	\$178.32	V40711K	3 & 4"	1	\$36.00
V40711N	4	4	207.05	V80711K	6 & 8"	1	46.00
V60711N	6	4	306.53				
V80711N	8	1	520.95				
<ul style="list-style-type: none"> Oval bolt holes designed to meet ANSI class 150, DIN, and BS 4504 PNG Full boot EPDM seal, requires no gaskets Lightweight, corrosion resistant plastic construction. Six position PVC index plate. Pressure rating, 3 - 6" 150 psi, 8" 100 psi Designed for swimming pool, pond, irrigation, and other water applications. 304 SS Stem <p>If used in an HDPE piping system, flange spacers and/or chamfered flange adapters may be required. Please contact your HDPE fittings distributor.</p> <p>The 711 Series BFF is sold as lever type only. For BFF's with Actuation, Gear Operators or Stem Extensions, please refer to the 411 or 311 series.</p>							

Pressure ratings are for non-shock water at 73°F.
Butterfly Valve Flange Bolt Kits - Page 15

BUTTERFLY VALVE BOLT SETS



Flange bolt sets sized to mate ANSI Class 150 flanges and Colonial Butterfly Valves.

- Offered in 304 SS, A307 Zinc Plated, and Galvanized Steel.
- Bolt kits do not include gaskets because Colonial butterfly valves do not require gaskets.
- Packed in corrugated cartons for ease of shipping/handling and organizing at the jobsite.

Butterfly Valve Size	3"
4 5/8-11 x 5-1/2 Hex Bolts	
4 5/8-11 Hex Nuts	
8 5/8 Flat Washers	
Butterfly Valve Size	4"
8 5/8-11 x 6 Hex Bolts	
8 5/8-11 Hex Nuts	
16 5/8 Flat Washers	
Butterfly Valve Size	6"
8 3/4-10 x 7 Hex Bolts	
8 3/4-10 Hex Nuts	
16 3/4 Flat Washers	
Butterfly Valve Size	8"
8 3/4-10 x 8 Hex Bolts	
8 3/4-10 Hex Nuts	
16 3/4 Flat Washers	
Butterfly Valve Size	10"
12 7/8-9 x 9 Hex Bolts	
12 7/8-9 Hex Nuts	
24 7/8 Flat Washers	
Butterfly Valve Size	12"
12 7/8-9 x 10 Hex Bolts	
12 7/8-9 Hex Nuts	
24 7/8 Flat Washers	

Part No.	Valve Size	WGT. (lbs.)	List
Pricing Schedule B			
Galvanized for BFV			
V30BFGK	2 & 3"	2.75	\$24.63
V40BFGK	4"	5.75	50.78
V60BFGK	6"	9.30	85.00
V80BFGK	8"	11.60	88.96
V100BFGK	10"	25.31	222.59
V120BFGK	12"	26.26	238.89
A307 Zinc Plated for BFV			
V30BFKZ	2 & 3"	2.70	\$18.00
V40BFKZ	4"	5.30	32.00
V60BFKZ	6"	9.30	62.00
V80BFKZ	8"	10.55	68.00
V100BFKZ	10"	24.31	159.00
V120BFKZ	12"	25.50	175.00
304 Stainless for BFV			
V30BFKS	2 & 3"	2.70	\$58.00
V40BFKS	4"	5.70	132.00
V60BFKS	6"	9.25	240.00
V80BFKS	8"	10.40	254.00
V100BFKS	10"	25.20	620.00
V120BFKS	12"	27.26	690.00

BUTTERFLY VALVE/FLANGE CONTRACTOR KIT



"NEW" Contractor Kit – Includes PVC Butterfly Valve, Two Lasco PVC Van-stone Flanges, and Bolt set. All packed in one heavy-duty corrugated carton for delivery to jobsite. One convenient part number ensures that all materials will be delivered. See the chart to determine the part number by choosing the size and series of the Butterfly valve, and the material of the bolt kit.

- PVC Butterfly Valve
- Two Lasco PVC Van Stone Flanges
- Bolt Set

Part No.	Size	BFV Series	Bolt Set Type	List
Kit to Include 411N Series PVC/EPDM BFV With Molded Polypro Lever Handle				
Pricing Schedule K				
KIT20411G	2	411	Galvanized	\$280.20
KIT20411Z	2	411	Zinc	271.76
KIT20411S	2	411	Stainless	322.73
KIT27411G	2-1/2	411	Galvanized	\$318.00
KIT27411Z	2-1/2	411	Zinc	310.00
KIT27411S	2-1/2	411	Stainless	363.00
KIT30411G	3	411	Galvanized	\$311.20
KIT30411Z	3	411	Zinc	302.76
KIT30411S	3	411	Stainless	353.73
KIT40411G	4	411	Galvanized	\$394.62
KIT40411Z	4	411	Zinc	368.59
KIT40411S	4	411	Stainless	496.01
KIT60411G	6	411	Galvanized	\$602.17
KIT60411Z	6	411	Zinc	581.05
KIT60411S	6	411	Stainless	749.32
KIT80411G	8	411	Galvanized	\$917.07
KIT80411Z	8	411	Zinc	901.05
KIT80411S	8	411	Stainless	1,205.53

See complete kit description at left.

Part No.	Size	BFV Series	Bolt Set Type	List
Kit to Include 311N Series PVC/EPDM BFV With Coated Metal Steel Lever Handle				
Pricing Schedule K				
KIT30311G	3	311	Galvanized	\$323.16
KIT30311Z	3	311	Zinc	314.72
KIT30311S	3	311	Stainless	365.68
KIT40311G	4	311	Galvanized	\$410.04
KIT40311Z	4	311	Zinc	386.12
KIT40311S	4	311	Stainless	513.54
KIT60311G	6	311	Galvanized	\$638.34
KIT60311Z	6	311	Zinc	616.84
KIT60311S	6	311	Stainless	848.64
Kit to Include 711N Series PVC/EPDM BFV With Molded Blue ABS Lever Handle				
Pricing Schedule K				
KIT30711G	3	711	Galvanized	\$263.16
KIT30711Z	3	711	Zinc	223.16
KIT30711S	3	711	Stainless	274.74
KIT40711G	4	711	Galvanized	\$334.74
KIT40711Z	4	711	Zinc	309.47
KIT40711S	4	711	Stainless	436.84
KIT60711G	6	711	Galvanized	\$524.21
KIT60711Z	6	711	Zinc	484.21
KIT60711S	6	711	Stainless	671.58
KIT80711G	8	711	Galvanized	\$778.95
KIT80711Z	8	711	Zinc	752.63
KIT80711S	8	711	Stainless	1,047.37

Pressure ratings are for non-shock water at 73°F.

NEW WAFER CHECK VALVES



- Compact – requires little space in piping systems
- No spacers required – Disc opens fully when installed using ANSI Sch 80 flanges/pipe
- Light weight, easy to install – wafer body slips between standard Sch 80 flanges
- Working pressure 145 psi, non-shock water at 73°F
- Horizontal or Vertical Operation
- Bubble tight shut-off –replaceable o-ring seal
- Vacuum rating: 29.9 Hg (inches mercury)
- Equipped with SS Spring
- Faster disc closure reduces amount of back flow and consequent water hammer
- Maximum closure is obtained with low pressure differential
- Recommended for pulsating flows and horizontal piping

Part No.	Size	Ctn. Qty.	List
PVC/EPDM with 316 SS SPRING: Pricing Schedule A			
V27601N	2-1/2	1	\$296.10
V30601N	3	1	332.10
V40601N	4	1	424.80
V60601N	6	1	640.80
PVC/VITON with 316 SS SPRING: Pricing Schedule A			
V27602N	2-1/2	1	\$355.50
V30602N	3	1	398.70
V40602N	4	1	510.30
V60602N	6	1	769.50

NEW WAFER CHECK VALVE CONTRACTOR KITS AND BOLT SETS



Includes Wafer Check, two PVC flanges*, and properly-sized bolt set.

One convenient part number ensures that all materials will be delivered.

*2-1/2 Companion Flange, 3" & up Van Stone Flange

WAFER CHECK CONTRACTOR KITS				WAFER CHECK BOLT SETS			
Part No.	Size	Ctn. Qty.	List	Part No.	Size	Ctn. Qty.	List
PVC/EPDM / 304 SS Bolt Set: Pricing Schedule K				304 Stainless Steel: Pricing Schedule B			
KIT27601S	2-1/2	1	\$425.00	V30WCKS	2-1/2	1	\$36.00
KIT30601S	3	1	481.00	V30WCKS	3	1	36.00
KIT40601S	4	1	649.00	V40WCKS	4	1	69.00
KIT60601S	6	1	1,005.00	V60WCKS	6	1	123.00
PVC/EPDM / Galvanized Bolt Set: Pricing Schedule K				Galvanized: Pricing Schedule B			
KIT27601G	2-1/2	1	\$384.00	V30WCKG	2-1/2	1	\$17.29
KIT30601G	3	1	441.00	V30WCKG	3	1	17.29
KIT40601G	4	1	570.00	V40WCKG	4	1	31.83
KIT60601G	6	1	854.00	V60WCKG	6	1	47.79
PVC/VITON / 304 SS Bolt Set: Pricing Schedule K							
KIT27602S	2-1/2	1	\$469.00				
KIT30602S	3	1	534.00				
KIT40602S	4	1	706.00				
KIT60602S	6	1	1,080.00				
PVC/VITON / Galvanized Bolt Set: Pricing Schedule K							
KIT27602G	2-1/2	1	\$448.00				
KIT30602G	3	1	513.00				
KIT40602G	4	1	662.00				
KIT60602G	6	1	994.00				

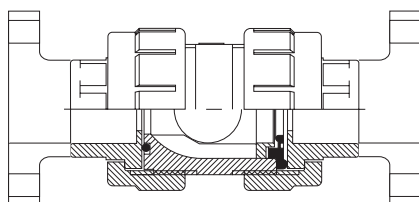
Pressure ratings are for non-shock water at 73°F.

TRUE UNION BALL CHECK VALVE



- Pressure Rating: 235 psi
- Strainer screen can be added (see next section)
- If installing a Ball Check Valve horizontally, a minimum of 5 psi (12" of head) back pressure is needed to maintain seat closure.
- Piston type ball, slides on guides to eliminate chatter in the open position.
- Silicone-Free Assembly
- Pressure Rating per ASTM F-1970

Note: 3/8" and 1/4" sizes are available (1/2" valves pre-assembled with reducer bushings). Contact Customer Service for part number and pricing.



(Flanged Type)

Part No.	Size	Ctn. Qty.	List
PVC/EPDM: Pricing Schedule A			
Socket and Thread End Connectors			
V07271ST	1/2	48	\$57.79
V08271ST	3/4	36	68.92
V10271ST	1	24	81.94
V14271ST	1-1/4	24	119.68
V17271ST	1-1/2	24	137.46
V20271ST	2	12	187.65

PVC/FKM: Pricing Schedule A			
Socket and Thread End Connectors			
V07272ST	1/2	48	\$65.14
V08272ST	3/4	36	72.74
V10272ST	1	24	91.36
V14272ST	1-1/4	24	134.31
V17272ST	1-1/2	24	152.54
V20272ST	2	12	208.66

PVC/EPDM: Pricing Schedule A			
Flanged			
V07271NF	1/2	1	\$71.05
V08271NF	3/4	1	86.21
V10271NF	1	1	102.32
V14271NF	1-1/4	1	126.00
V17271NF	1-1/2	1	174.32
V20271NF	2	1	246.32

PVC/FKM: Pricing Schedule A			
Flanged			
V07272NF	1/2	1	\$89.05
V08272NF	3/4	1	107.05
V10272NF	1	1	125.05
V14272NF	1-1/4	1	163.89
V17272NF	1-1/2	1	189.47
V20272NF	2	1	252.00

CPVC/EPDM: Pricing Schedule A			
Socket and Thread End Connectors			
V07273ST	1/2	48	\$89.91
V08273ST	3/4	36	107.62
V10273ST	1	24	126.97
V14273ST	1-1/4	24	218.68
V17273ST	1-1/2	24	218.68
V20273ST	2	12	292.84

CPVC/FKM: Pricing Schedule A			
Socket and Thread End Connectors			
V07274ST	1/2	48	\$100.08
V08274ST	3/4	36	119.59
V10274ST	1	24	141.07
V14274ST	1-1/4	24	242.77
V17274ST	1-1/2	24	242.77
V20274ST	2	12	325.45

CPVC/EPDM: Pricing Schedule A			
Flanged			
V07273NF	1/2	48	\$97.73
V08273NF	3/4	36	116.67
V10273NF	1	24	138.61
V14273NF	1-1/4	24	235.35
V17273NF	1-1/2	24	251.31
V20273NF	2	12	444.76

CPVC/FKM: Pricing Schedule A			
Flanged			
V07274NF	1/2	48	\$121.87
V08274NF	3/4	36	147.59
V10274NF	1	24	171.53
V14274NF	1-1/4	24	291.19
V17274NF	1-1/2	24	314.13
V20274NF	2	12	476.67

Note: For 2-1/2", 3" & 4" Ball Check Valves - See Page 17
Addition of Flanged Ends Reduces Pressure Rating to 150 psi

FOOT VALVE STRAINER FOR TRUE UNION BALL CHECKS



Replaces the Union Nut on the upstream side of the True Union Ball Check Valve (**sold separately**).

Install the assembly vertically with strainer side down. Prevents debris from entering the fluid stream of a suction pipeline. Valve opens when suction is activated. Ball then seats to close the valve when suction is not present.

Part No.	Size	Ctn. Qty.	List
PVC: Pricing Schedule A			
V07271P	1/2	1	\$14.19
V08271P	3/4	1	18.91
V10271P	1	1	22.46
V17271P	1-1/4 & 1-1/2	1	30.73
V20271P	2	1	40.19

Part No.	Size	Ctn. Qty.	List
CPVC: Pricing Schedule A			
V07273P	1/2	1	\$22.40
V08273P	3/4	1	29.86
V10273P	1	1	34.84
V17273P	1-1/4 & 1-1/2	1	48.54
V20273P	2	1	63.51

SINGLE UNION BALL CHECK VALVES SOCKET X SOCKET

- If installing a Ball Check Valve horizontally, a minimum of 5 psi (12' of head) back pressure is needed to maintain seat closure
- PP available by special order
- Pressure Rating per ASTM F-1970
- Silicone-Free Assembly



- Pressure Rating:
PVC and CPVC
235 psi 1/2 - 2"
150 psi 2-1/2"
100 psi 3 - 4"

Part No.	Size	Ctn. Qty.	List
PVC w/EPDM O-Rings S x S: Pricing Schedule A			
V27221B1	2-1/2	8	\$442.11
V30221B1	3	8	510.53
V40221B1	4	4	587.37

CPVC w/EPDM O-Rings S x S: Pricing Schedule A			
V27223B	2-1/2	8	\$515.66
V30223B	3	8	580.26
V40223B	4	4	1,024.75

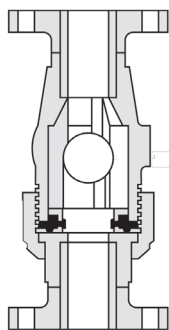
Part No.	Size	Ctn. Qty.	List
PVC w/FKM O-Rings S x S: Pricing Schedule A			
V08222B	3/4	24	\$61.78
V10222B	1	24	79.94
V17222B	1-1/2	12	130.85
V20222B	2	6	191.02
V27222B	2-1/2	8	461.99
V30222B	3	8	533.80
V40222B	4	4	614.03

CPVC w/FKM O-Rings S x S: Pricing Schedule A			
V27224B	2-1/2	8	\$535.55
V30224B	3	8	603.54
V40224B	4	4	998.83

Pressure ratings are for non-shock water at 73°F.

FLANGED BALL CHECK 2-1/2 – 4"

- Pressure Rating: 150 psi
- ANSI Class 150 Flange
- If installing a Ball Check Valve horizontally, a minimum of 5 psi (12' of head) back pressure is needed to maintain seat closure



Part No.	Size	Ctn. Qty.	List
PVC w/EPDM O-Rings F x F: Pricing Schedule A			
V27241B	2-1/2	8	\$590.64
V30241B	3	8	808.31
V40241B	4	4	1,015.44
CPVC w/EPDM O-Rings F x F: Pricing Schedule A			
V27243B	2-1/2	8	\$833.33
V30243B	3	8	1,040.44
V40243B	4	4	1,524.58

Part No.	Size	Ctn. Qty.	List
PVC w/FKM O-Rings F x F: Pricing Schedule A			
V27242B	2-1/2	8	\$610.53
V30242B	3	8	831.58
V40242B	4	4	1,096.96
CPVC w/FKM O-Rings F x F: Pricing Schedule A			
V27244B	2-1/2	8	\$853.21
V30244B	3	8	1,063.72
V40244B	4	4	1,551.24

FOOT VALVE STRAINER FOR SINGLE UNION BALL CHECK

- Pressure Rating: 150 psi

Shown assembled with Single Union Ball Valve.
(sold separately)



Part No.	Size	Ctn. Qty.	List
PVC: Pricing Schedule A			
V08221P	3/4	1	\$18.91
V17221P	1-1/2	1	28.27
V20221P	2	1	30.73

Available in sizes 3/4 - 2" in PVC. Replaces the union end of the single union ball check valve. Installs vertically with strainer side down. Prevents debris from entering the fluid stream of a suction pipeline. Valve opens when suction is activated. Ball then seats to close the valve when suction is not present.

SCH 40 GRAY SWING CHECK VALVE

Two-piece body design joined with 304 SS fasteners, and an EPDM gasket. This valve can be disassembled for service. EPDM seal weighted with PVC disc.



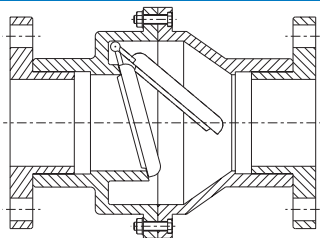
- 150 psi in Open Position. 75 psi in the closed position.
- Gravity-based closure (no spring). The open position allows for unobstructed continuous flow with minimal head loss.
- Minimum opening pressure less than 0.5 PSI

Part No.	Size	Ctn. Qty.	List
White PVC/EPDM: Pricing Schedule A			
Soc x Soc			
V10611N	1	80	\$15.97
Gray PVC/EPDM: Pricing Schedule A			
Soc x Soc with S.S. Fasteners			
V08611G	3/4	108	\$16.84
V10611G	1	72	18.53
V14611G	1-1/4	36	23.16
V17611G	1-1/2	30	25.26
V20611G	2	24	31.16
V27611N	2-1/2	16	72.63
V30611N	3	8	89.47
V40611N	4	6	173.68

REPLACEMENT FLAPPER FOR SWING CHECK VALVES

Part No.	Size	Ctn. Qty.	List
Pricing Schedule B			
V08611E	3/4	1	\$3.00
V10611E	1	1	3.80
V14611E	1-1/4	1	6.50
V17611E	1-1/2	1	8.00
V20611E	2	1	9.75
V27611E	2-1/2	1	11.00
V30611E	3	1	11.00
V40611E	4	1	18.00

FLANGED SWING CHECK VALVE



- Flange x Flange design allows for removal from the piping system for maintenance, or replacement.
- ANSI Class 150 Flange pattern
- Pressure rated to 150 psi in the open position, 75 psi in the closed position.
- PVC body and flange, 304 SS fasteners
- Body can be disassembled for maintenance
- Minimum opening pressure less than 0.5 PSI

Part No.	Size	Ctn. Qty.	List
PVC/EPDM: Pricing Schedule A			
V17611NF	1-1/2	1	\$72.63
V20611NF	2	1	125.26
V30611NF	3	1	247.37
V40611NF	4	1	573.68
Gravity-based closure (no spring). The open position allows for unobstructed continuous flow with minimal head loss.			

SPRING CHECK VALVES

- Pressure Rating: 100 psi
- Stainless steel spring maintains a positive seal even when no back pressure is present. 2 psi minimum flow pressure is required to open valve.

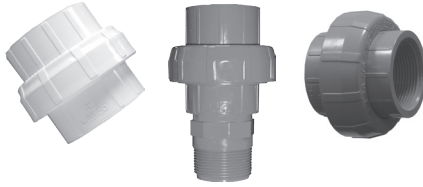


Part No.	Size	Ctn. Qty.	List
PVC/EPDM: Pricing Schedule A			
Soc x Soc			
V07221B	1/2	10	\$10.11
V08221B	3/4	10	10.85
V10221B	1	8	16.06
V14221B	1-1/4	6	21.48
V17221B	1-1/2	6	22.15
V20221B	2	4	26.67

Part No.	Size	Ctn. Qty.	List
PVC/EPDM: Pricing Schedule A			
Threaded x Threaded			
V07221T	1/2	10	\$10.11
V08221T	3/4	10	10.85
V10221T	1	8	16.06
V14221T	1-1/4	6	21.48
V17221T	1-1/2	6	22.15
V20221T	2	4	26.67

Pressure ratings are for non-shock water at 73°F.

PVC & CPVC SCH 80 UNION

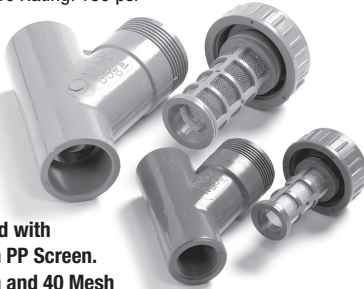


At LASCO Fittings, Inc., we are constantly striving to improve our fittings. Our employees work hard to provide our customer with quality parts. Our re-designed unions are shining examples of our cutting edge technology and well known performance. During the design process, pressure rating was our highest priority. Although our unions have ratings of 150 to 235 p.s.i., they have been tested to over 750 p.s.i. These tests were conducted according to ASTM F1970 standards. Because of their high pressure rating, these unions have improved sealing. Now our unions are stronger, more durable, a better fit in tight locations, and have the appropriate wall thickness and sockets. LASCO Fittings, Inc. is dedicated to quality parts and quality performance.

See List Price Sheets Schedule 40, Schedule 80 and CPVC Schedule 80 for a complete listing of Unions.

Y-STRAINER

- Pressure Rating: 150 psi



Equipped with
20 Mesh PP Screen.
20 Mesh and 40 Mesh
SS Screen available in select sizes.

Part No.	Size	Ctn. Qty.	List
PVC w/EPDM O-RINGS: Pricing Schedule B			
Socket			
V07281B	1/2	24	\$52.20
V08281B	3/4	24	58.29
V10281B	1	24	64.39
V14281B	1-1/4	12	116.60
V17281B	1-1/2	12	116.60
V20281B	2	9	146.41

Part No.	Size	Ctn. Qty.	List
CPVC w/FKM O-RINGS*: Pricing Schedule B			
Socket			
V07284B	1/2	24	\$116.75
V08284B	3/4	24	129.48
V10284B	1	24	167.20

* Select sizes available in CPVC.
Contact Customer Service for availability.

Y-STRAINER REPLACEMENT CARTRIDGE

Part No.	Size	Ctn. Qty.	List
PVC 20 MESH (SS SCREEN): Pricing Schedule B			
V07281BM	1/2	1	\$12.24
V08281BM	3/4	1	16.32
V10281BM	1	1	20.40
V17281BM	1-1/2 & 1-1/4	1	24.47

CPVC 20 MESH (SS SCREEN): Pricing Schedule B			
V07284BM	1/2	1	\$25.76
V10284BM	1	1	42.93
V17284BM	1-1/2 & 1-1/4	1	52.67
V20284BM	2	1	68.67

Part No.	Size	Ctn. Qty.	List
PVC 40 MESH (SS SCREEN): Pricing Schedule B			
V07281BO	1/2	1	\$12.24
V08281BO	3/4	1	16.32
V10281BO	1	1	20.40

CPVC 40 MESH (SS SCREEN): Pricing Schedule B			
V07284BO	1/2	1	\$25.76
V08284BO	3/4	1	34.34
V10284BO	1	1	42.93
V17284BO	1-1/2 & 1-1/4	1	52.67
V20284BO	2	1	68.67

Part No.	Size	Ctn. Qty.	List
PVC 20 MESH (PP SCREEN): Pricing Schedule B			
V07281PM	1/2	1	\$12.24
V08281PM	3/4	1	16.32
V10281PM	1	1	20.40
V17281PM	1-1/2 & 1-1/4	1	24.47
V20281PM	2	1	32.62

CPVC 20 MESH (PP SCREEN): Pricing Schedule B			
V07284PM	1/2	1	\$25.76
V08284PM	3/4	1	34.34
V10284PM	1	1	42.93
V17284PM	1-1/2 & 1-1/4	1	52.67
V20284PM	2	1	68.67

Note: 20 mesh Stainless Steel screens have a square opening 0.032"
20 mesh Polypropylene screens have a square opening 0.028"
40 mesh Stainless Steel screens have a square opening 0.016"

In-line Y-Strainers protect pumps and other pipeline components by removing solids and sediment. Colonial Y-Strainers are suitable for flow rates of up to 150 gpm, in applications which require infrequent cleaning and in which the process media is environmentally safe. The strainer branch of the Y-Strainer must be pointing downward so that gravity enables the trapping of sediment and debris. The system must be depressurized and drained prior to removing and cleaning or replacing the strainer cartridge.

Colonial recommends the purchase of an extra cartridge with each Y-Strainer so that maintenance time can be reduced.

Pressure ratings are for non-shock water at 73°F.

ACTUATED VALVES



Submittals and wiring diagrams for actuators are available at www.colonialengineering.com or call customer service.

Colonial offers pneumatic or electric actuated True Union Ball Valves and Butterfly Valves. Mounting Kits, Valves, Actuators and Accessories can be sold separately, or as complete, tested assemblies.

Colonial offers actuators from Bonomi/Valbia (Electric and Pneumatic), Valvsys (Electric) and Max-Air (Pneumatic). Actuators are sized to fit Colonial Full Block TUBVs in sizes ranging from 1/2" - 4", and (Direct Mount) Butterfly Valves 2"-12".

Please contact customer service with your request for quotation.

Required information for Actuated Valve assembly quotations:

Electric Actuator

115 VAC or 24 VAC or 24VDC
On/Off Electric or Fail-safe?
Heater for outdoor use required?
4-20 mA positioner needed?
Extra limit switches / position indicators needed?
Desired cycle time for 1/4 turn rotation?

Pneumatic Actuator

Double Acting or Spring Return (Fail-safe)?
Solenoid (pilot valve) needed?
1/4" NPT Air Connections?
Remote Position Indicators or other accessories needed?

Bonomi Electric Actuator features:

- Housing constructed of self-extinguishing, corrosion-resistant technopolymer material.
- Stainless Steel fasteners.
- Electronic Circuit adjusts the motor speed depending on the mechanical charge variations to keep the drive cycle time consistent.
- Electronic torque limitation
- Built-in heater activates when temperature in the housing drops below 77° F.
- Battery activated Fail-Safe accessory available.
- Available 24V or 115 VAC

Pneumatic Actuator features:

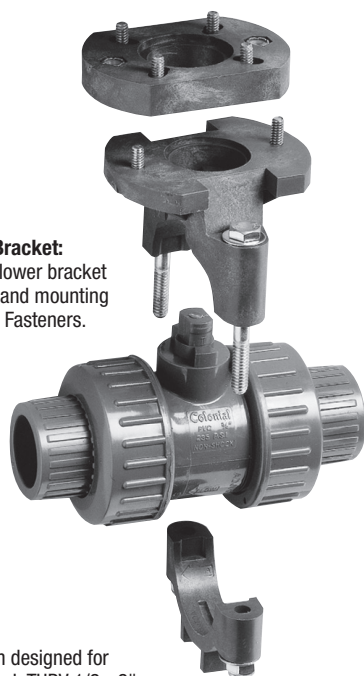
- Housing constructed of self-extinguishing, corrosion-resistant technopolymer material for Ball Valve sizes 1/2" - 2" (Max-Air)
- Anodized Aluminum housing (Bonomi)
- Stainless Steel fasteners
- Namur VDI/VDE 3845 and ISO 5211 dimensions on all sizes. No special blocks are required to mount solenoid valves, limit switches or positioners
- Air-to-Air and Spring Return (fail-safe) models available
- Supply: Air (lubricated if possible), min 40 psi and max 120 psi

Complete technical brochures (PDFs) are available at www.colonialengineering.com

MOUNTING KIT FOR 1/2" - 2" FULL BLOCK TRUE UNION BALL VALVE SERIES

Plastic Bracket:

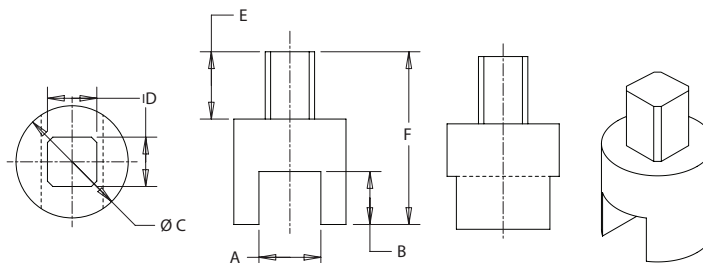
Upper & lower bracket sections and mounting plate. SS Fasteners.



- Custom designed for Full Block TUBV 1/2 - 2".
- Molded from fiberglass-filled PVC for extra strength
- Includes SS fasteners (Stem coupling must be ordered separately)
- ISO 5211 mounting pattern
- Can be retro-fitted to an installed Full Block TUBV

BRACKET: Pricing Schedule B

Part No.	For Valve Size	ISO Pattern	List
V07501A	1/2	F04	\$35.11
V08501A	3/4	F04	38.30
V10501A	1	F04/5	40.43
V17501A	1-1/2 & 1-1/4	F05	44.68
V20501A	2	F05	47.87



SS STEM COUPLINGS: Pricing Schedule B

SIZE	A	B	C	D	E	F	ISO	PART NUMBER	List
1/2"	.320	.335	1.00	.430	.500	1.440	F04	V07502A	\$38.00
3/4"	.380	.390	1.00	.430	.500	1.410	F04	V08502A	38.00
1"	.440	.450	1.00	.430	.500	1.490	F04	V10502A	39.00
1-1/2"	.560	.570	1.25	.550	.629	1.740	F05	V17502A	40.00
1-1/4"	.560	.570	1.25	.430	.500	1.490	F04	V17502A-F04	40.00
2"	.690	.575	1.25	.550	.629	1.920	F05	V20502A	40.00
2"	.690	.575	1.25	.430	.500	1.65	F04	V20502A-F04	40.00

BRACKET FOR 3" & 4" TRUE UNION BALL VALVES



This bracket features a mounting pad with a PCD of 102mm (ISO 5211 F10) and a 17mm square stem coupling. A design enhancement is currently in-process. Please contact Colonial Customer Service for details, pricing and a submittal.

Torque Values For Full Block True Union Ball Valves

Valve Size	Opening Torque (In-Lbs)
1/2"	16
3/4"	35
1"	60
1-1/4"	110
1-1/2"	110
2"	180
3"	600
4"	1,000

Pricing Schedule B

Part No.	Size	List*
V30501P	3	
V40501P	4	

ISO 5211 F10

* For Bracket Only. Valve Ordered Separately.

SLO-CLOSE PLASTIC BALL VALVES

Patented thermoplastic gear driven operating nut rotates 360° to achieve a 90° turn of the ball. The result is slow closure and the elimination of water hammer, while maintaining the positive shut- off and reliable service of a ball valve. Components and internal gears of the Slo-Close system are molded of durable Acetal material, and the Set screw is 316 SS. The system is mounted on Colonial's Full Block True Union Ball Valve , and Super C Sch 80 Compact Valve, both of which have a proven record of quality in industrial process piping, water treatment, commercial plumbing and irrigation markets for over 30 years.

Valve can be actuated by use of a standard Champion Sprinkler Key or Lasco Valve Key. Successfully introduced to the Turf Irrigation market in isolation valve applications, the Slo-Close valve will perform in any industry where the avoidance of water hammer is a priority. **Do not use for throttling (in partially open position).**

See List Price Sheet VPSC-6 for a complete listing of Slo-Close Valves and Accessories.

NOTE: Master distribution of the Slo-Close Series **for the irrigation industry** is offered through:

LASCO Fittings, Inc.	(731) 772-3180
414 Morgan Street	(800) 776-2756
Brownsville, TN 38012	Fax: (731) 772-0835



RECOMMENDATIONS TO INSTALLERS AND USERS

Plastic piping systems should be engineered, installed, operated and maintained in accordance with accepted standards and procedures. Suitability for the intended application should be determined and verified by the designer and/or installer. Prior to assembly, all piping components should be inspected for damage or irregularities, and for the proper fit of mating components. The published instructions of the manufacturers of all attributes of the piping system (including but not limited to: pipe, fittings, valves, solvent cement & primer, thread sealant or Teflon tape) must be followed. All design, installation, operation and maintenance personnel must be trained on the proper precautions, use, handling, and installation of thermoplastic piping systems prior to use. A NOTE ON VALVE SELECTION: Ball Valves are designed for On/Off service and are NOT SUITABLE for throttling in a semi-closed position. Butterfly Valves ARE SUITABLE for both throttling and for On/Off service. For complete installation advice, please visit http://www.colonialengineering.com/html/valves_and_piping.html.

For Temperature and Pressure De-Rating Information See Page 3.

MATERIALS FOR O-RINGS AND VALVE SEATS

The information on this page has been supplied to Colonial Engineering, Inc. by other reputable sources and is to be used ONLY as a guide in selecting equipment for appropriate chemical compatibility. Before permanent installation, test the equipment with the chemicals and under the specific conditions of your application. Colonial Engineering, Inc. does not warrant (neither express nor implied) that the information on this page is complete or that any material is suitable for any purpose.

EPDM – Suitable for most types of irrigation, pool, process piping, and basic water distribution, including chlorinated and salt water, and mild concentrations of a range of chemicals. EPDM Rubber has excellent tear and abrasion resistance and is chemically resistant to a large variety of acids, alkalis, alcohol, and oxidants.

Recommended for: phosphate ester base hydraulic fluids, water, silicone oils and greases, dilute acids, dilute alkalis, ketones, alcohol's and automotive brake fluids.

Not recommended for: petroleum oils or dilutions of hydrocarbons, di-ester base lubricants.

FKM (Viton®) – For use with heavier concentrations of chemicals, sodium hypochlorite (bleach), Ozone, and others. The terms FPM, FKM and Viton® very often cause confusion and lead to incorrect interpretations. All of these designations actually stand for one single base material: fluoro rubber. Viton® is the registered trade mark of DuPont Performance Elastomers. Recommended for: Petroleum oils, di-ester based lubricants, silicate ester base lubricants, silicone fluids and greases, halogenated hydrocarbons, selected phosphate ester fluids and acids, water. Not recommended for: ketones, amines, low molecular weight esters and ethers, and hot hydrofluoric or chlorosulfonic acids.

Buna-N (aka Nitrile) – used only for butterfly valves, when they will be exposed to hydrocarbons (examples: methane gas in the mining, landfill, and energy markets, or a solution that contains some concentration of petroleum.)

Buna-N (also known as Nitrile rubber or NBR), is the general term for acrylonitrile butadiene terpolymer. It has good mechanical properties when compared with other elastomers, and high wear resistance. It is not resistant to weathering and ozone.

Recommended for: Aliphatic hydrocarbons (propane, butane, petroleum oil, mineral oil and grease, diesel fuel, fuel oils) vegetable and mineral oils and greases; HFA, HFB and HFC fluids; Dilute acids, alkali and salt solutions at low temperatures; water.

Not recommended for: Fuels of high aromatic content (for flex fuels a special compound must be used); Aromatic hydrocarbons (benzene); Chlorinated hydrocarbons (trichlorethylene); Polar solvents (ketone, acetone, acetic acid, ethylene-ester); Strong acids; Brake fluid with glycol base; Ozone, weather and atmospheric aging.

Silicone - Used only for o-rings in True Union Ball Valves 1" & down. This material option is included in the Colonial valve line specifically for use in dosing-systems handling Sodium Permanganate (an oxidant recommended for potable drinking water applications including iron removal, manganese removal, mercaptan odor control, color reduction, and radium reduction).

Recommended for: Sodium Permanganate, High-aniline point oils

Not recommended for: Most petroleum fluids. Ketones (MEK, acetone)

PTFE (Polytetrafluoroethylene) – Teflon®, used for the seats of Industrial TUBV, Commercial TUBV, Super C Compact, and Industrial MIP ball valves. This nearly insoluble and chemically inert fluorocarbon is used for valve seats. PTFE has a natural lubricating quality and high thermal stability. It has excellent dielectric properties and chemical resistance, low friction, outstanding stability at high temperatures.

TEFLON® is a registered trademark of DuPont. Only DuPont makes Teflon. DuPont™ is a trademark of DuPont and its affiliates. Viton® is a registered trademark of DuPont Performance Elastomers

TERMS AND CONDITIONS OF SALE

These terms and conditions apply to sales of stock valves and pipe fittings within the continental United States. For shipments to Alaska, or for international and offshore shipments, please contact Customer Service for details.

1. Terms: 2% 35 days, net 45 days.
2. Freight: FOB LASCO warehouses. Prepaid on orders totaling \$1,500 net for one shipment to single destination within the contiguous United States.
3. Minimum order: \$100 net. Smaller orders billed at this minimum charge.
4. Claims for shipping errors must be made within 15 days to LASCO. Claims for damage or shortages should be directed promptly to the common carrier by the consignee.
5. Returns will be accepted only by prior authorization and if shipped freight prepaid. Returned merchandise subject to a MINIMUM 25% handling/restocking charge.
6. Pricing is subject to change without prior notice. However, prior notification will be given in the event of price changes in the period between order placement and scheduled shipment.
7. Offer to sell is not implied by possession of this or other LASCO price lists.

LIMITED WARRANTY

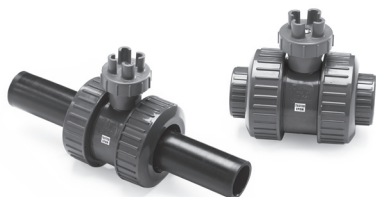
Seller's products are carefully inspected for manufacturing defects; however, it is not always possible to detect hidden defects. Said products are warranted only to the extent that seller will replace, without charge, products proved to have manufacturing defects within 36 months of the date of delivery thereof and provided seller has been given the opportunity to inspect the product alleged to be defective and the installation or use thereof. Any use for other purposes than for transporting liquids or any modification of any product involving changes in the structure void any warranty of the manufacturer. No warranty is included against any expense for removal, reinstallation or other consequential damages arising from any defect. The warranties set out above are the only warranties made by seller and are expressly in lieu of all other warranties, expressed or implied, including the warranties of merchantability of fitness for a particular purpose.

COMPRESSED AIR WARNING

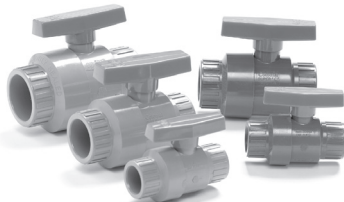
The products in this document are only intended for use in transferring or storing chemically compatible pressurized liquids. Do not test or use products in this document with compressed air or other gases. Doing so is dangerous and could cause injury or great bodily harm should a system fail under compressed air. Only use products that are specifically designed for compressed air/gas service. Call Colonial technical service for more information.

Printed in USA 9/16

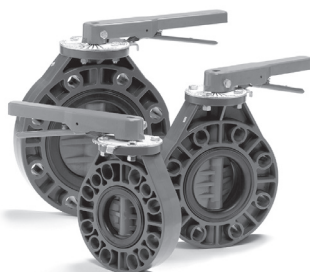
LASCO[®]
Fittings, Inc.



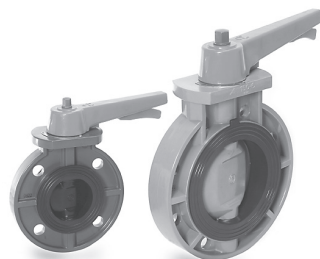
**SLO-CLOSE
BALL VALVES**



SUPER "C"™ BALL VALVES



311N BUTTERFLY VALVES



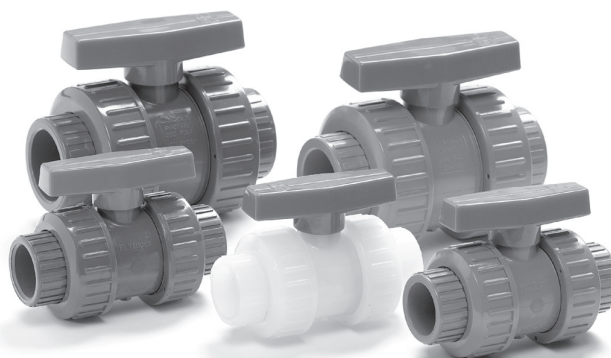
**BUTTERFLY VALVES
(2-8")**



**BUTTERFLY VALVES
(3-24")**



**MIP VALVES
(1/2 - 4")**



FULL BLOCK™ INDUSTRIAL TRUE UNION BALL VALVES



**TRUE UNION BALL CHECK
VALVES**



**SPRING CHECK VALVES & SWING
CHECK VALVES**



Y-LINE STRAINERS



WAFER CHECK VALVE



ACTUATED VALVES



**COMMERCIAL TRUE UNION
BALL VALVES**

**LASCO Fittings, Inc. and Colonial Valve proudly serve
wholesalers in the industrial PVF, process
piping, water treatment, pool/spa, commercial
plumbing, and irrigation markets.**

VALVE APPLICATIONS

- Reverse Osmosis Systems
- Waste Water Treatment
- Pesticide Manufacturing
- Mining
- Chemical Processing
- Swimming Pools/Spas
- Aquariums
- Irrigation
- Metal Finishing and Plating
- Fluid Circulation Systems
- Fertilization
- De-Ionized Water
- Aqua Culture
- Pharmaceutical
- Pulp and Paper Processing
- Photographic Processing Systems
- Food Processing
- Original Equipment Manufactured Products (OEM)
- Wherever Reliable Corrosion-Resistant Flow-Control is Needed



Distributed by:

LASCO®
Fittings, Inc.

LASCO ALSO CARRIES:

Schedule 40 / Schedule 80
Schedule 80 CPVC
Large Diameter
(Sch 40, Sch 80, Class 125, DWV)
DWV / Inserts / Nipples
Swing Joints / Tapt Saddles
and other
Heavy Turf Accessories
Contact customer service for details.